

THIS MAP WAS PREPARED FOR ASSESSMENT PURPOSE ONLY.

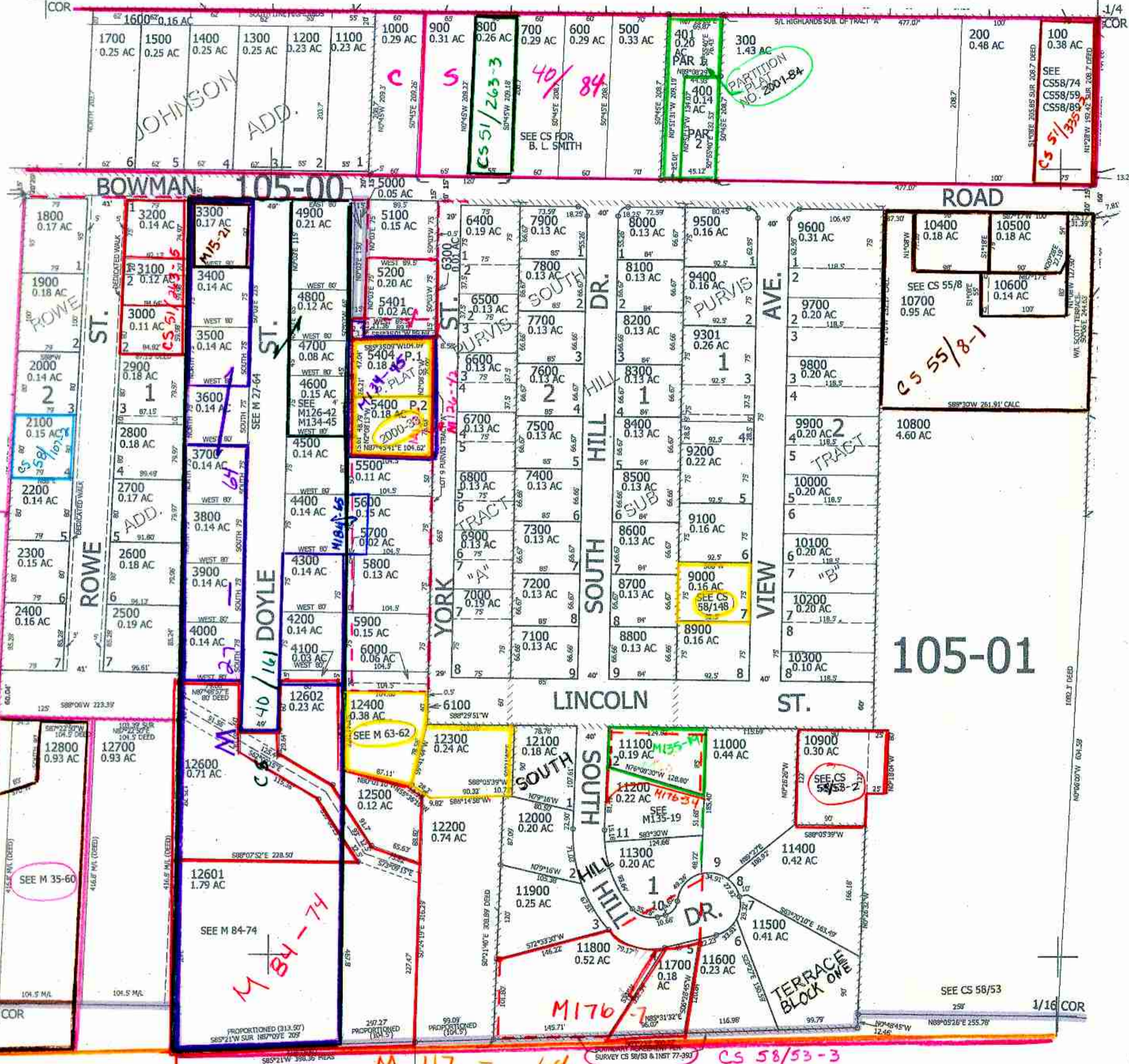
NE1/4 SE1/4 SEC.4 T.22S. R.12W. W.M. DOUGLAS COUNTY 1" = 100'

REVISED ON 5-1-07

22 12 4DA REEDSPORT

SEE MAP 22 12 4AC 1/16 COR

SEE MAP 22 12 4AD



CANCELLED NOS 12502 5300 5402 5403 9300 6200 12501 9201

SEE MAP 22 12 3CB

PARCEL 5200 1. 585°35'09"W 15.04' 2. N0°09'13"W 26.85' 3. N87°34'21"E 13.07' 4. S70°31'16"E 26.33'

757,000

SEE MAP 22 12 4

3,963,000

22 12 4DA REEDSPORT