

THIS MAP WAS PREPARED FOR ASSESSMENT PURPOSE ONLY.

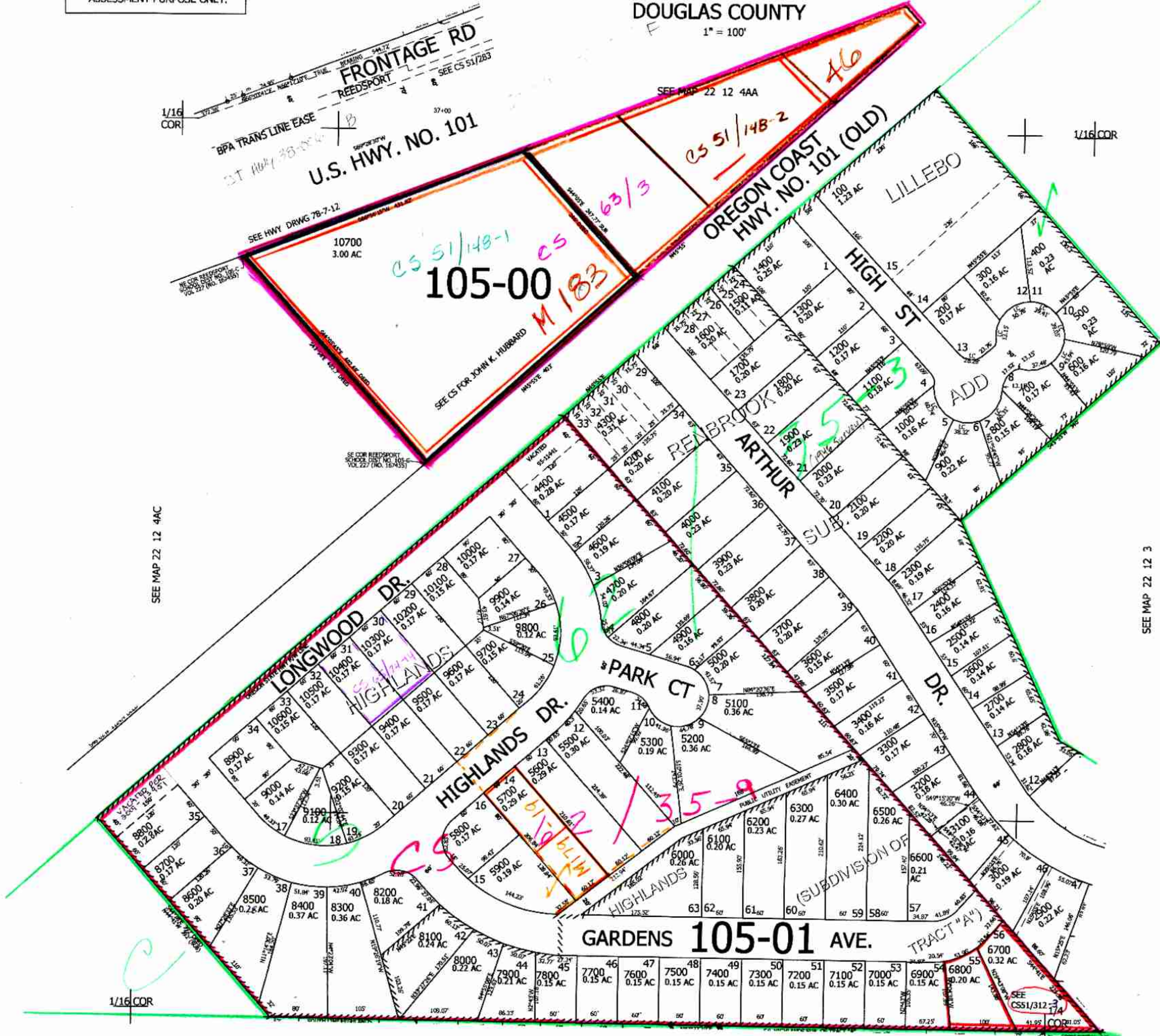
SE1/4 NE1/4 SEC.4 T.22S. R.12W. W.M. DOUGLAS COUNTY

REVISED ON 1-3-06

22 12 4AD REEDSPORT

1" = 100'

CANCELLED NOS



SEE MAP 22 12 4DA

3,963,000

22 12 4AD REEDSPORT

*am silvado & m*