

THIS MAP WAS PREPARED FOR ASSESSMENT PURPOSE ONLY.

SW1/4 NE1/4 SEC.4 T.22S. R.12W. W.M.  
DOUGLAS COUNTY  
1" = 100'

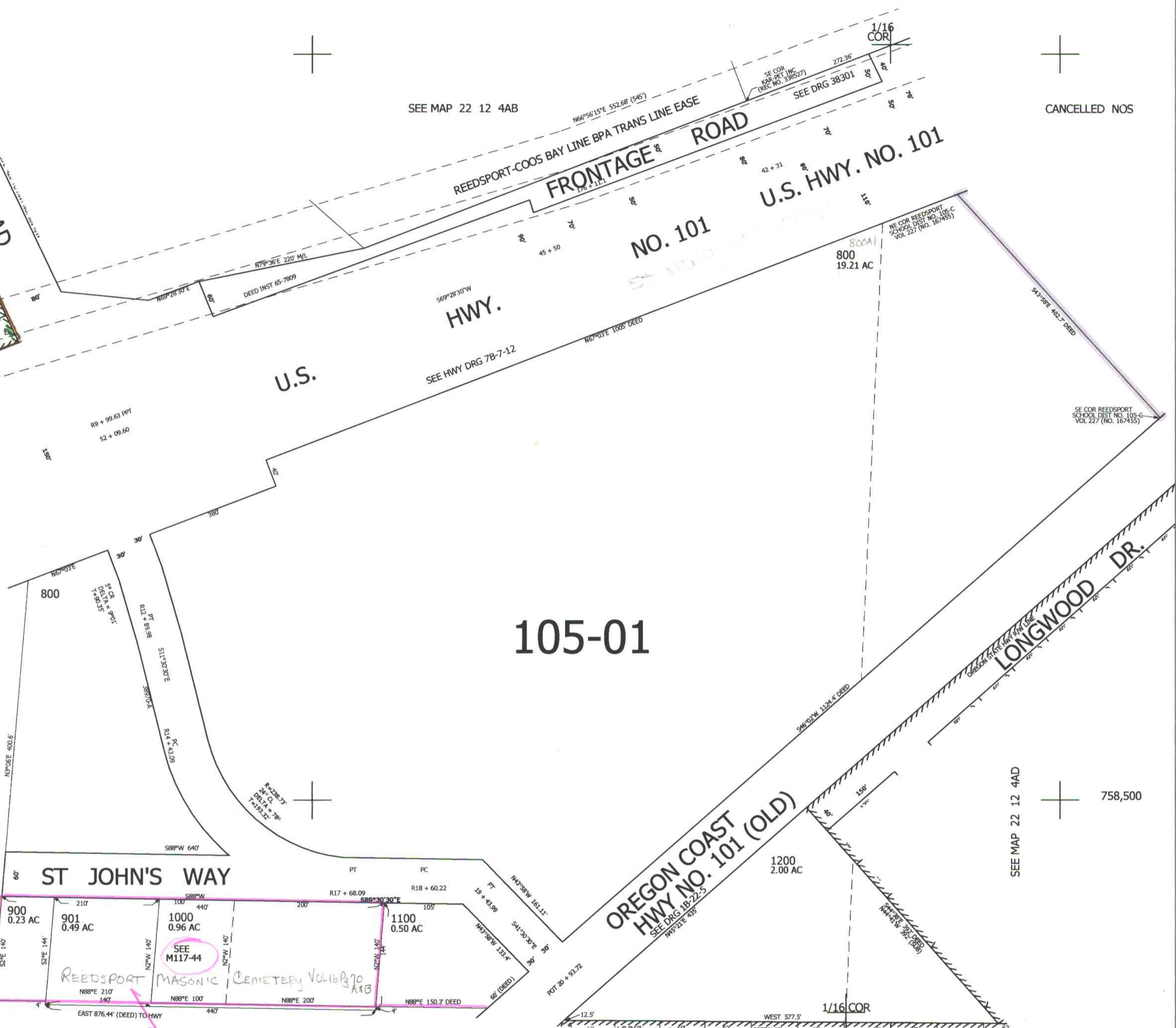
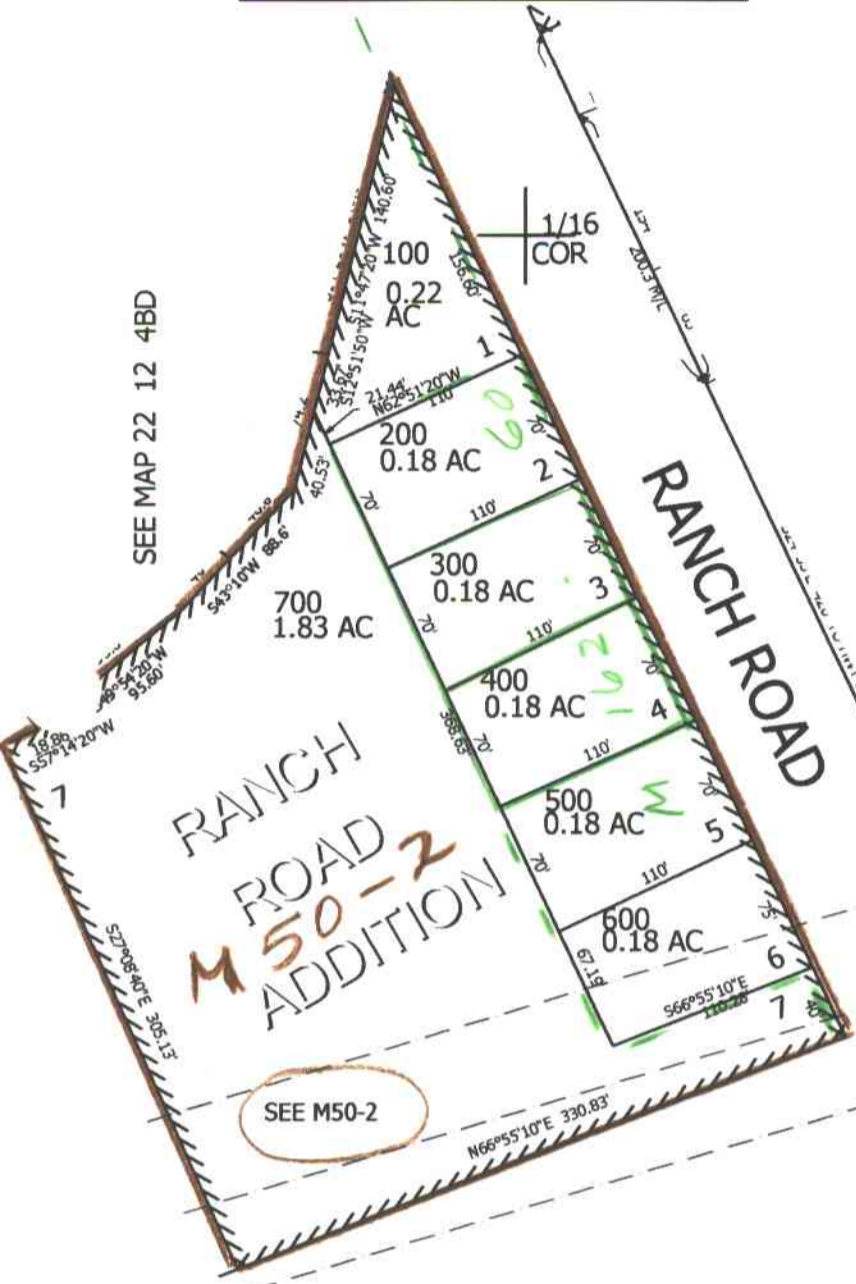
REVISED ON  
1-3-06

22 12 4AC  
REEDSPORT

SEE MAP 22 12 4BD

SEE MAP 22 12 4AB

CANCELLED NOS



SEE MAP 22 12 4DB

3,962,000  
01/26/05  
✓ NW

22 12 4AC  
REEDSPORT