

THIS MAP WAS PREPARED FOR ASSESSMENT PURPOSE ONLY.

1/4 COR.

NW1/4 NE1/4 SEC.4 T.22S. R.12W. W.M.

M102-71

DOUGLAS COUNTY

1" = 100'

REVISED ON 8-2-11

22 12 4AB REEDSPORT

1/16 COR.

M102-71

CANCELLED NOS
8501 8501M1 8500M1
8600M1 8600A1

SEE MAP 22 12 4AA

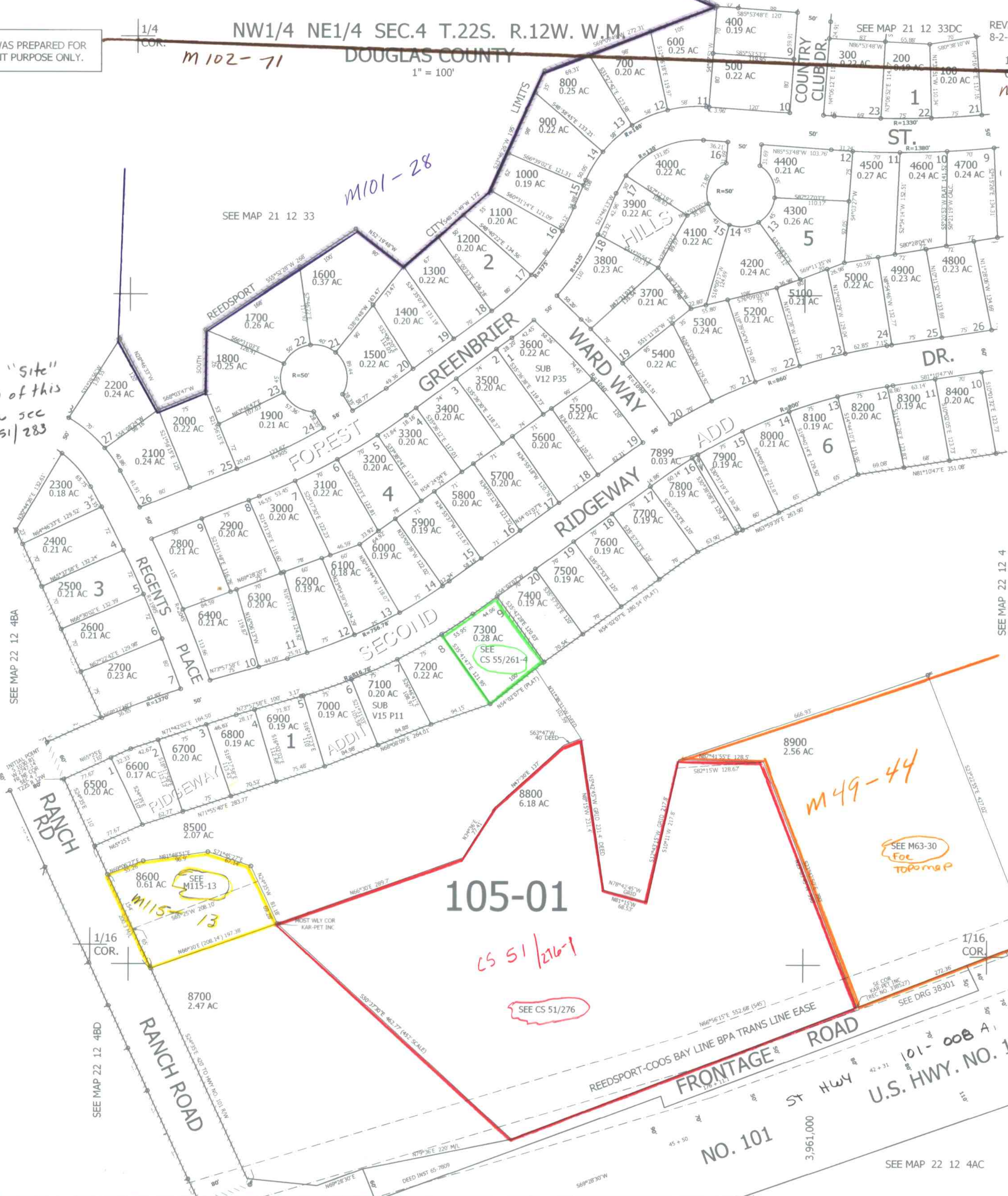
SEE MAP 22 12 4

SEE MAP 22 12 4AA

For "Site" map of this area see CS 51/283

SEE MAP 22 12 4BA

SEE MAP 22 12 4BD



105-01

CS 51/216-1

SEE CS 51/276

M49-44

SEE M63-30 FOR TOPO MAP

SEE M115-13

101-008 A U.S. HWY. NO. 101

22 12 4AB REEDSPORT

SEE MAP 22 12 4AC