

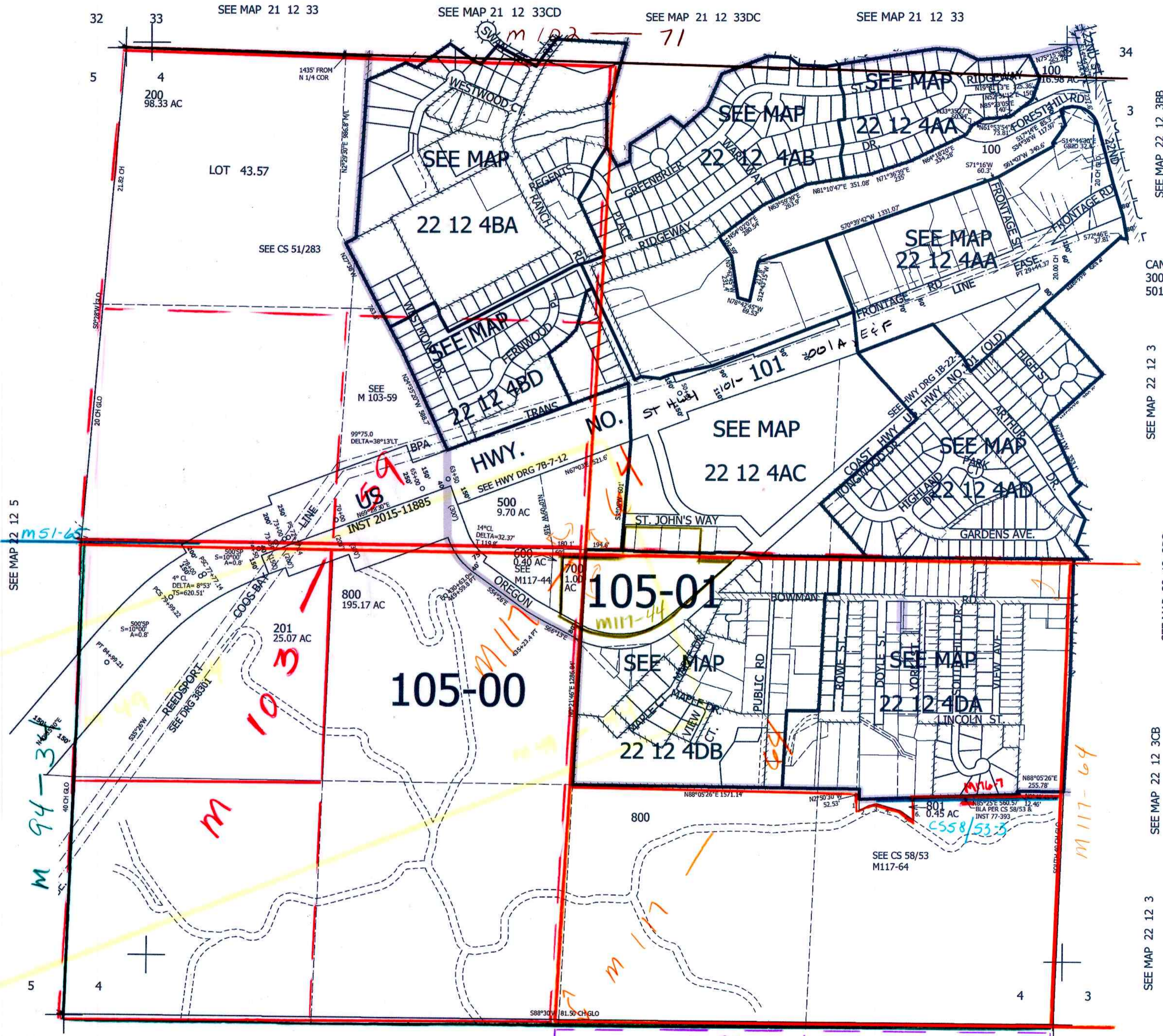
THIS MAP WAS PREPARED FOR ASSESSMENT PURPOSE ONLY.

SEC.4 T.22S. R.12W. W.M.
DOUGLAS COUNTY

1" = 400'

REVISED ON
11-16-15

22 12 4
& INDEX
REEDSPORT



SEE MAP 22 12 3BB

CANCELLED NOS
300 400 900
501 900M1 200M1

SEE MAP 22 12 3

SEE MAP 22 12 3BC

SEE MAP 22 12 3CB

SEE MAP 22 12 3

756,000

SEE MAP 22 12 3

22 12 4
& INDEX
REEDSPORT

- PARCEL 801
- S2°50'30"E 60' (DEED)
 - S2°50'30"E 56.19' (M117-64)
 - N60°E 57' (DEED)
 - N75°E 45' (DEED)
 - N73°19'41"E 110.5' (M117-64)
 - S77°E 131' (DEED)
 - S76°20'48"E 98.21' (M117-64)
 - S57°E TO INT WITH THE SLY EXT OF E. LINE OF V829 P674 (DEED)
 - S61°31'22"E 114' (M117-64)
 - N0°24'19"W TO 1/16 LINE (DEED)
 - N1°31'40"W 126.28' TO BLA CS 58/53 (M117-64)

8/23/07

3,963,000

SEE MAP 22 12 9