

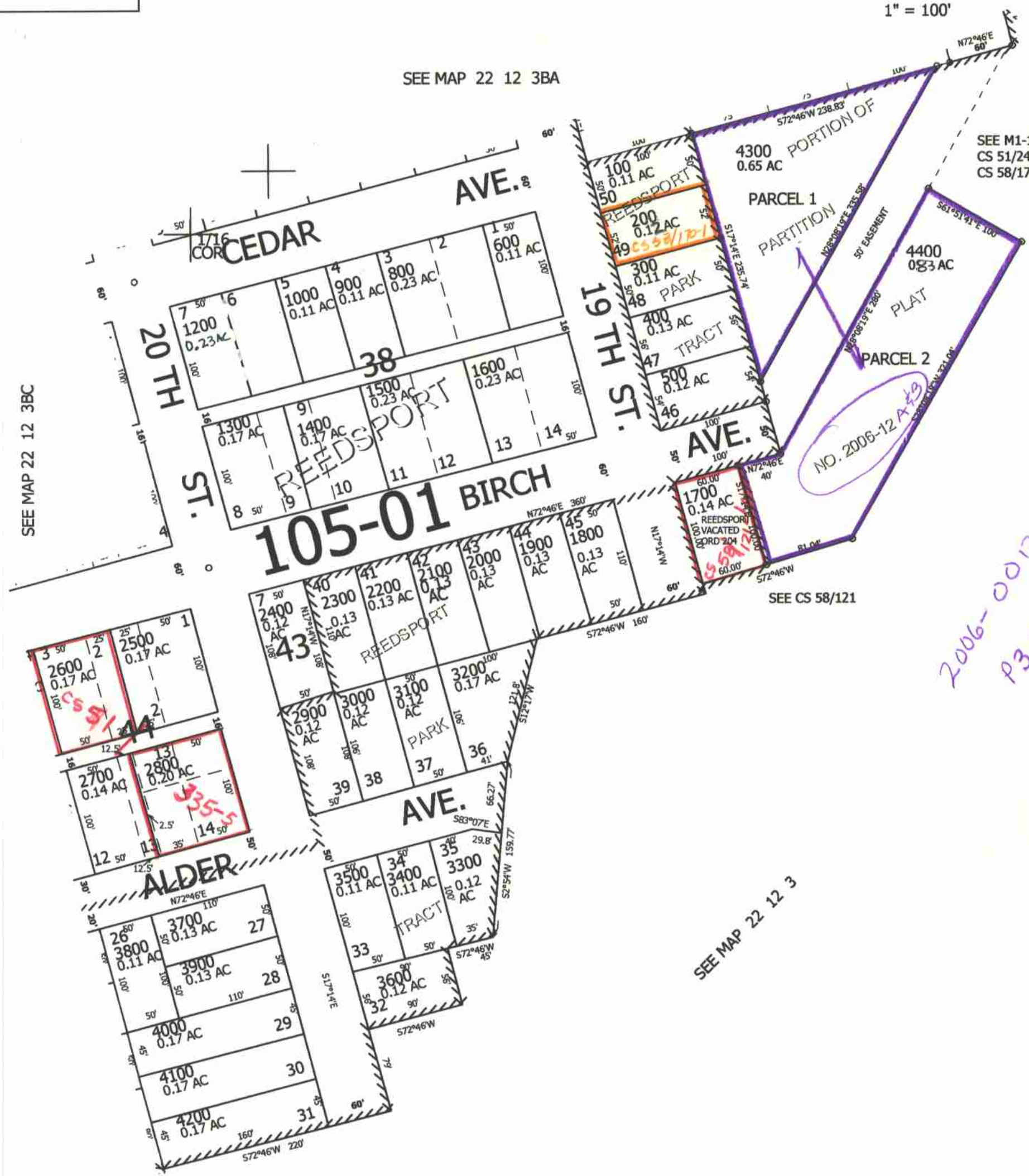
THIS MAP WAS PREPARED FOR ASSESSMENT PURPOSE ONLY.

# SE1/4 NW1/4 SEC.3 T.22S. R.12W. W.M. DOUGLAS COUNTY

REVISED ON 2-14-06

## 22 12 3BD REEDSPORT

1" = 100'



SEE MAP 22 12 3BC

SEE MAP 22 12 3BA

SEE MAP 22 12 3

SEE MAP 22 12 3

CANCELLED NOS 700 1100

1/16 COR

758,500

1/16 COR

3,965,500

CM 2/23/06 JCV  
 22 12 3BD  
 REEDSPORT