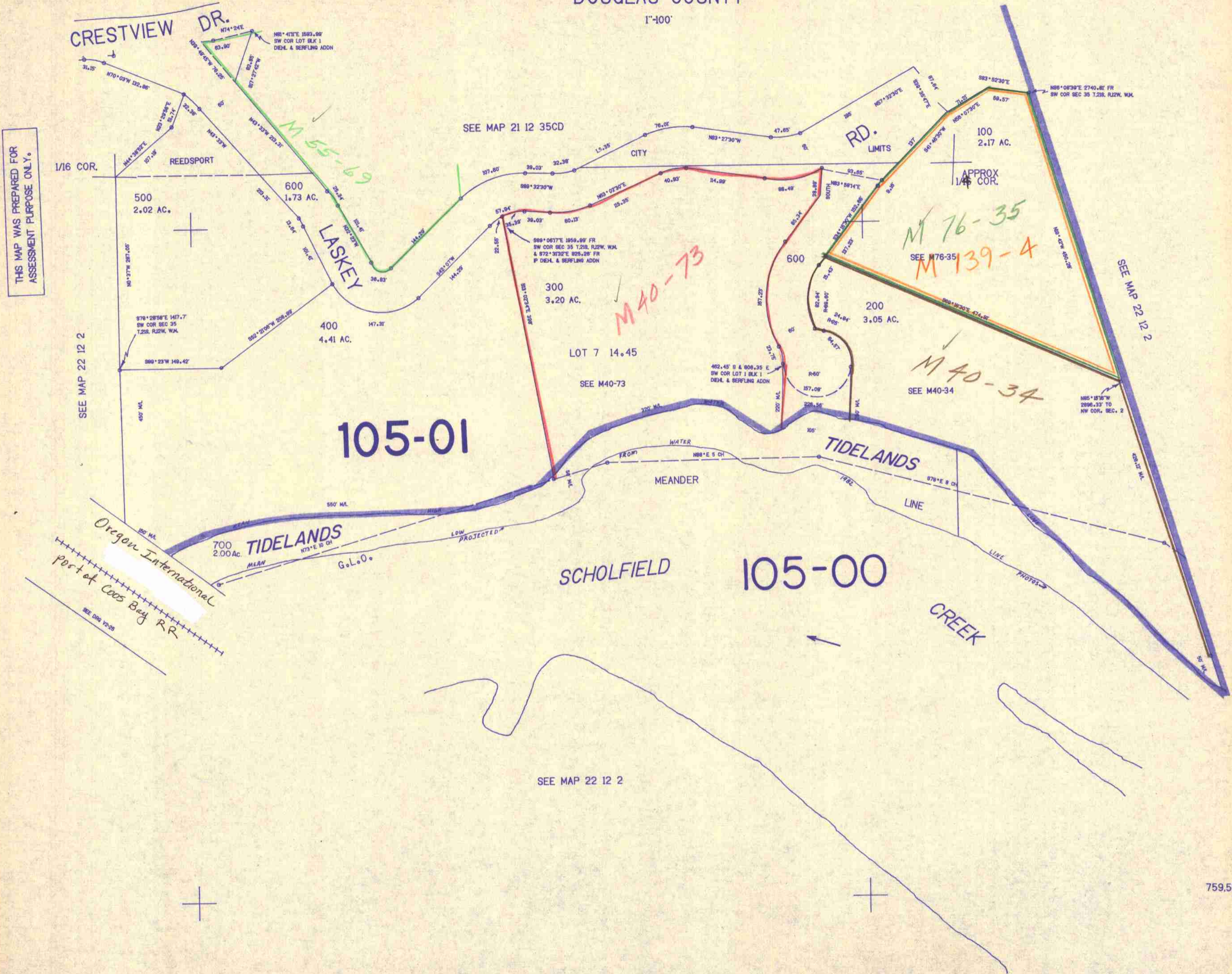


NE1/4 NW1/4 SEC. 2 T.22S. R.12W. W.M.
DOUGLAS COUNTY

22 12 2BA

1"=100'



THIS MAP WAS PREPARED FOR
ASSESSMENT PURPOSE ONLY.

SEE MAP 22 12 2

SEE MAP 21 12 35CD

SEE MAP 22 12 2

SEE MAP 22 12 2

APPROX
1/16 COR.

APPROX
1/16 COR.

22 12 2BA

759.500