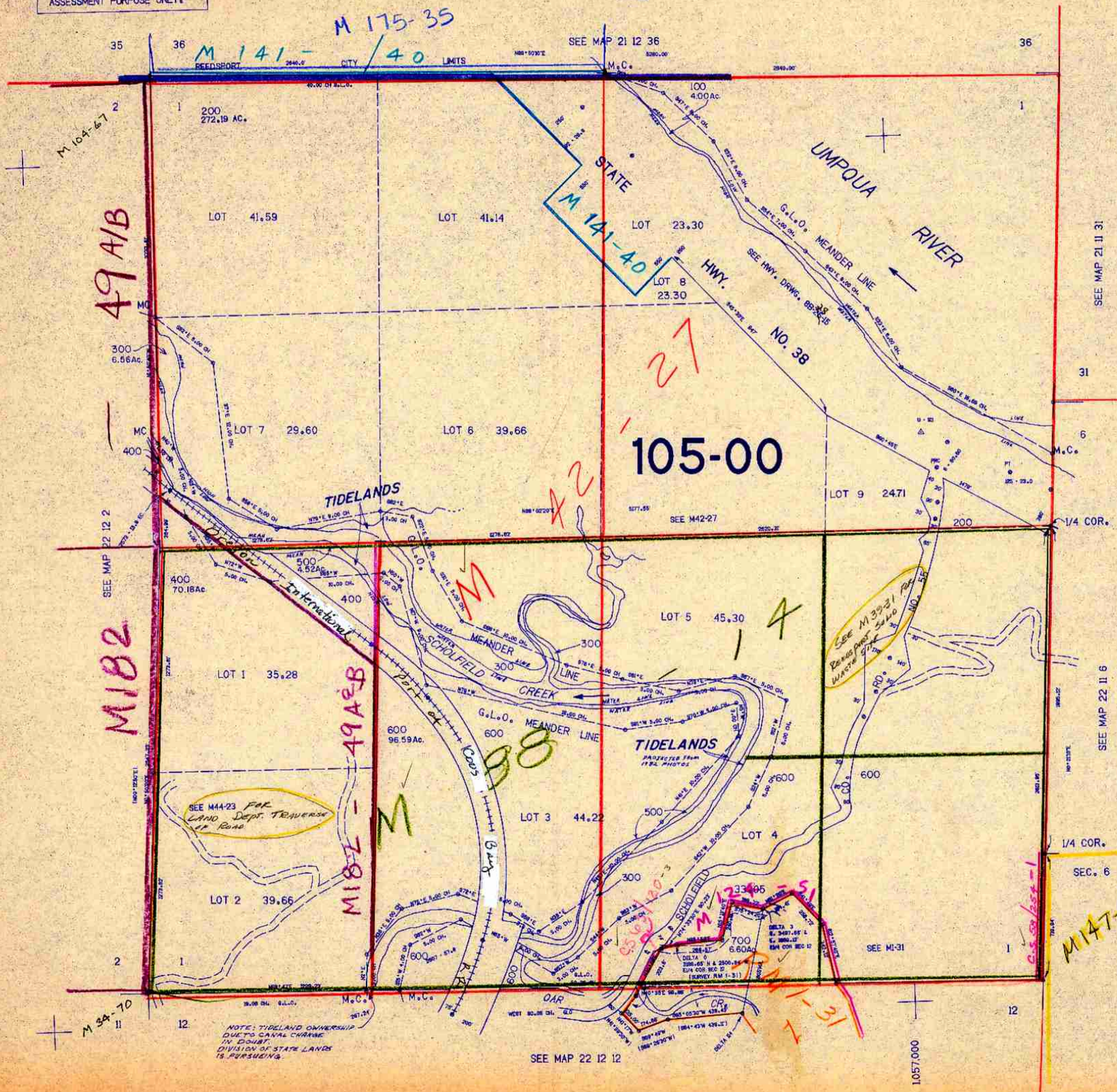


SECTION 1 T.22S. R.12W. W.M.  
DOUGLAS COUNTY

22 12 1

THIS MAP WAS PREPARED FOR  
ASSESSMENT PURPOSE ONLY.

1"=400'



M 104-67

M 175-35  
M 141-40

49 A/B

105-00

M 182

M 105-00

M 147-44

NOTE: TIDELAND OWNERSHIP  
DUE TO CANAL CHANGE  
IN DOUBT,  
DIVISION OF STATE LANDS  
IS PURSUING.

SEE MAP 22 12 12

22 12 1