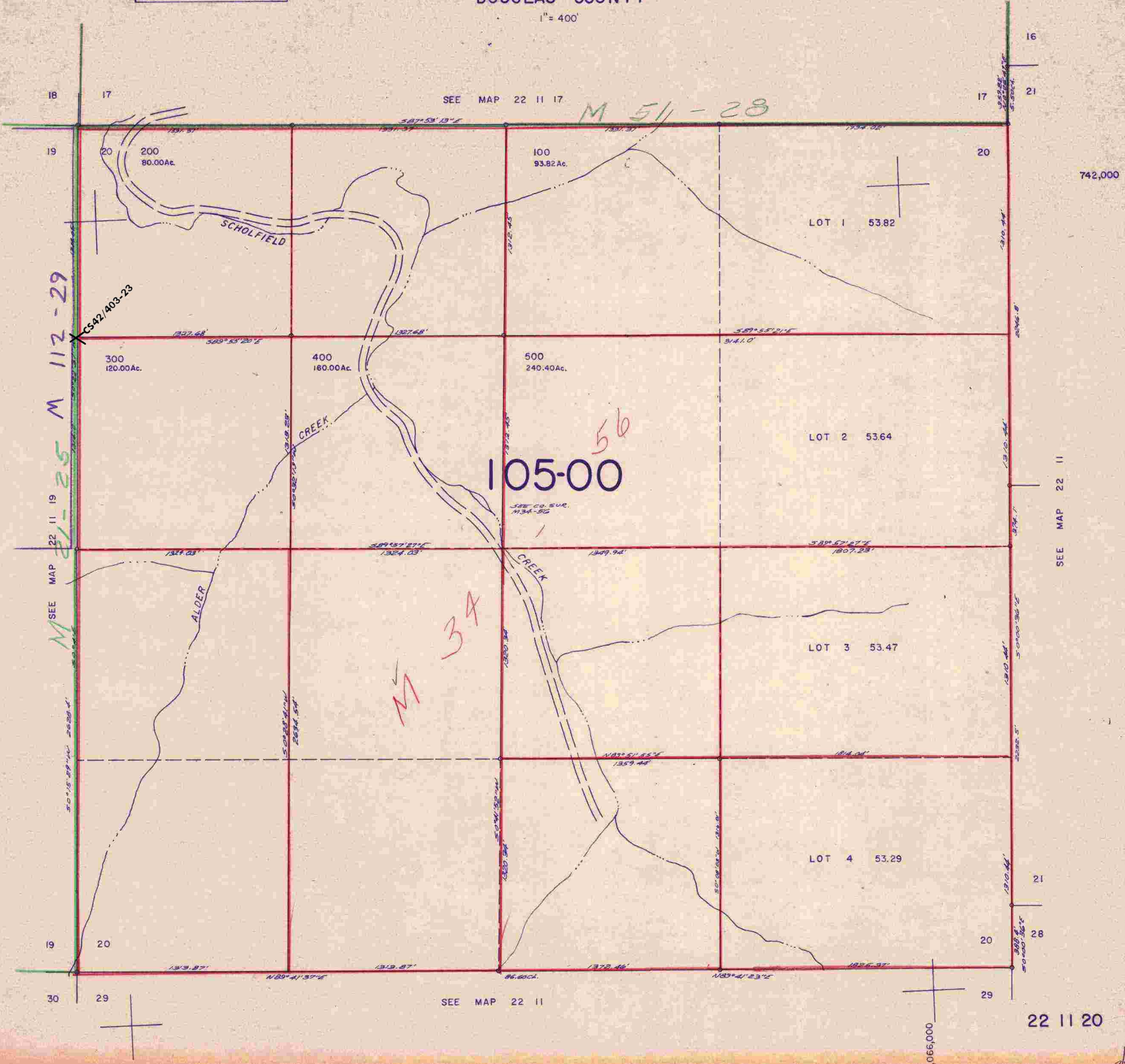


THIS MAP WAS PREPARED FOR
ASSESSMENT PURPOSE ONLY.

SECTION 20 T.22S. R.11W. W.M.
DOUGLAS COUNTY

22 11 20

1" = 400'



742,000

SEE MAP 22 11

SEE MAP 22 11

22 11 20

1,066,000

3/10/20