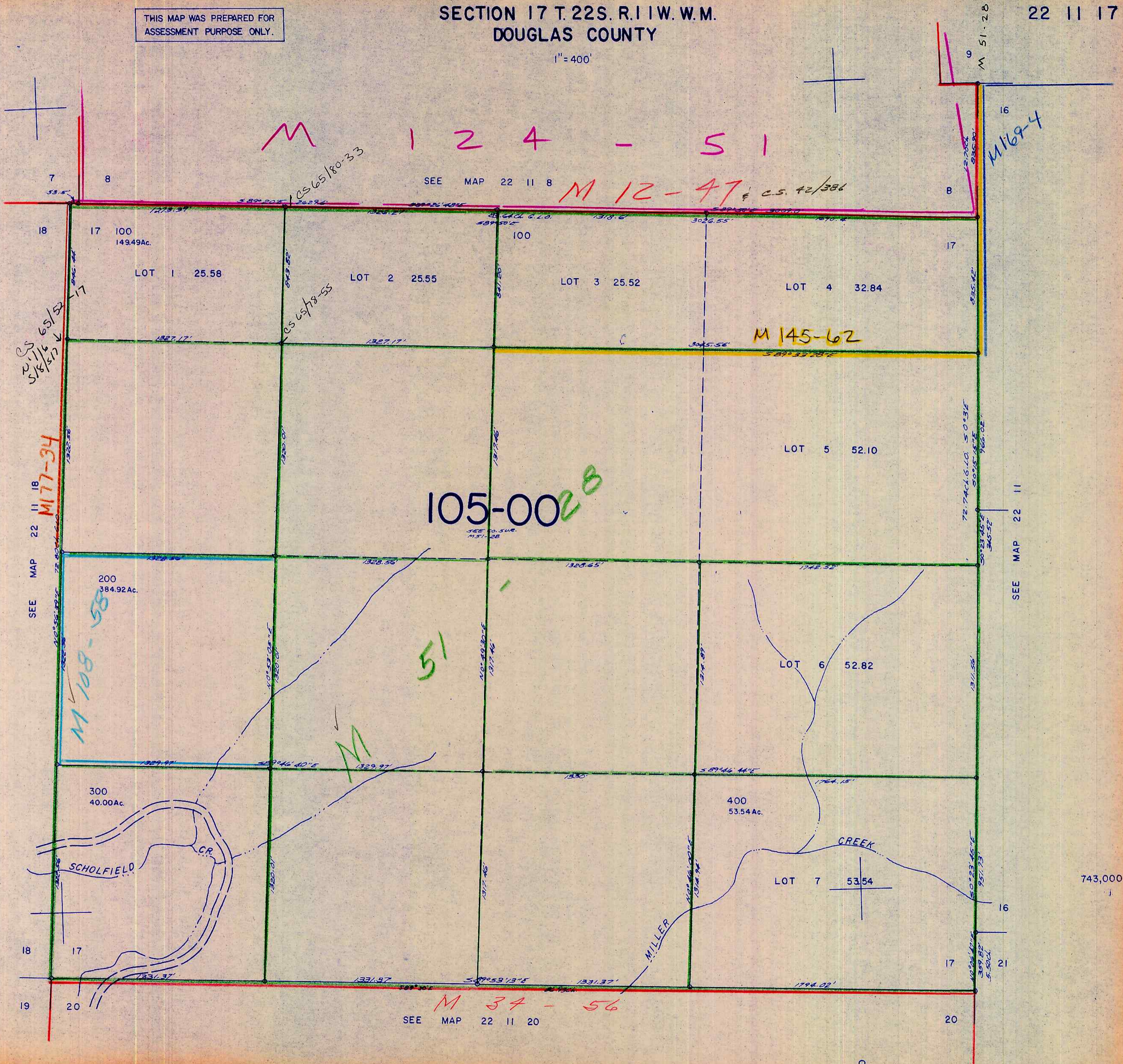


THIS MAP WAS PREPARED FOR ASSESSMENT PURPOSE ONLY.

SECTION 17 T. 22S. R. 11W. W.M. DOUGLAS COUNTY

1" = 400'

22 11 17



SEE MAP 22 11 18
M 177-34
SEE MAP 22 11 18
M 109-58

SEE MAP 22 11 8

SEE MAP 22 11

SEE MAP 22 11 20

1,066,000

22 11 17

743,000