

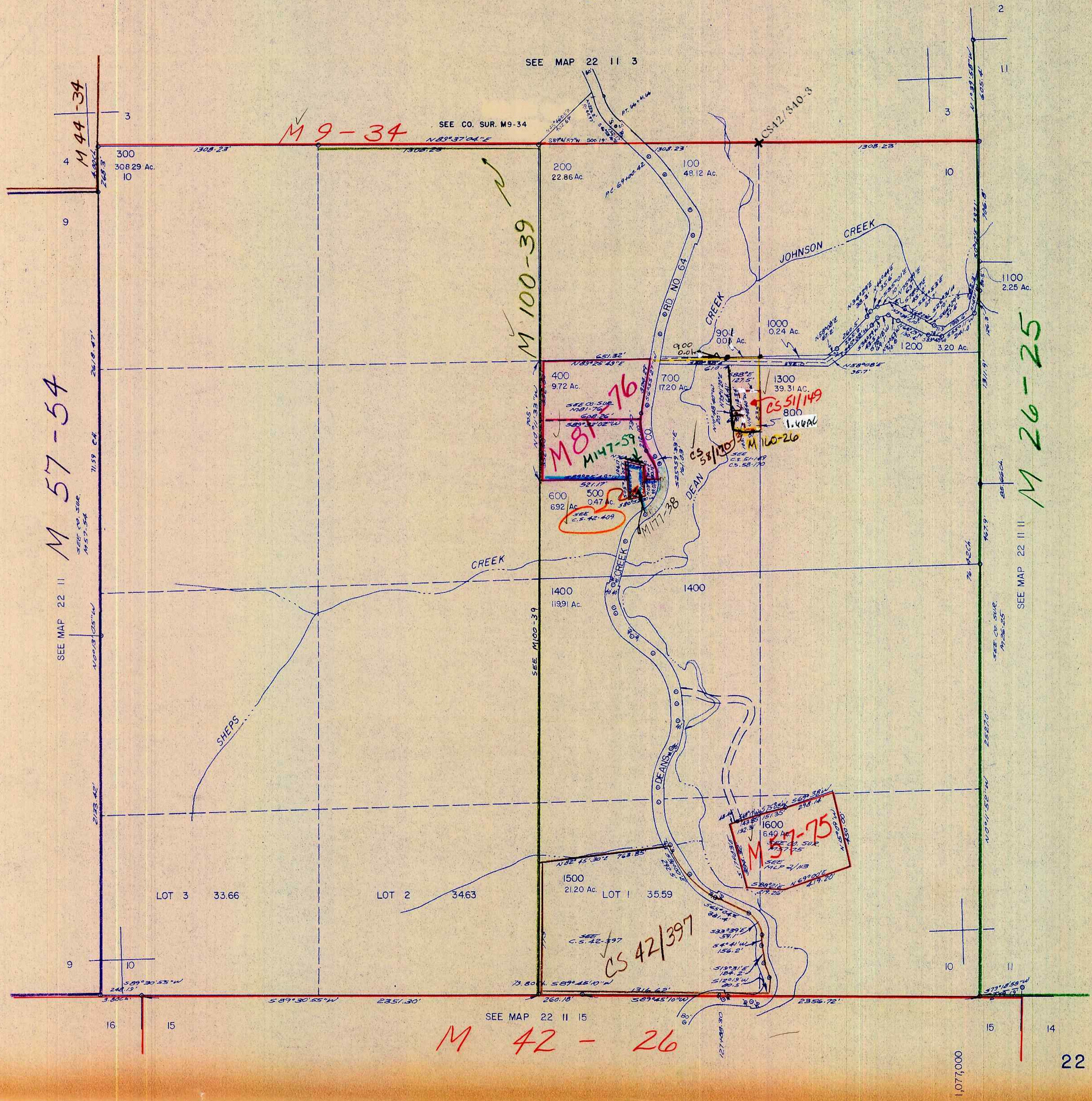
SECTION 10 T.22S. R.11W. W.M.
DOUGLAS COUNTY

REVISED ON
11-23-92

22 11 10

THIS MAP WAS PREPARED FOR
ASSESSMENT PURPOSE ONLY.

1" = 400'



M 57-54

M 9-34

M 100-39

M 26-25

CS 42/397

M 57-75

M 42-26

748,000

22 11 10

11/22
CB
28