

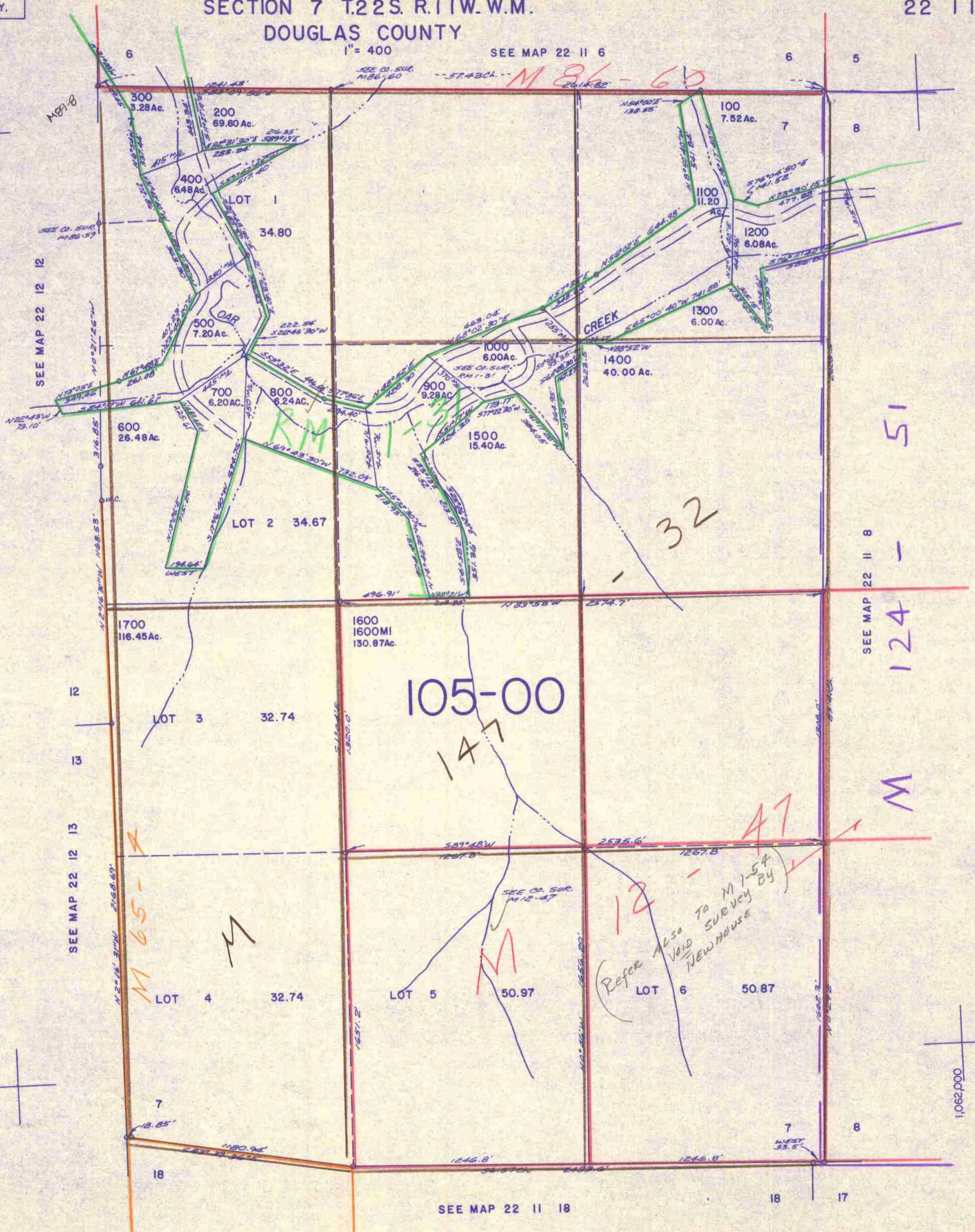
THIS MAP WAS PREPARED FOR ASSESSMENT PURPOSE ONLY.

SECTION 7 T.22S. R.11W. W.M.
DOUGLAS COUNTY

22 11 7

1" = 400

SEE MAP 22 11 6



SEE MAP 22 11 18

748,000
1,062,000

22 11 7

3/83
JL