

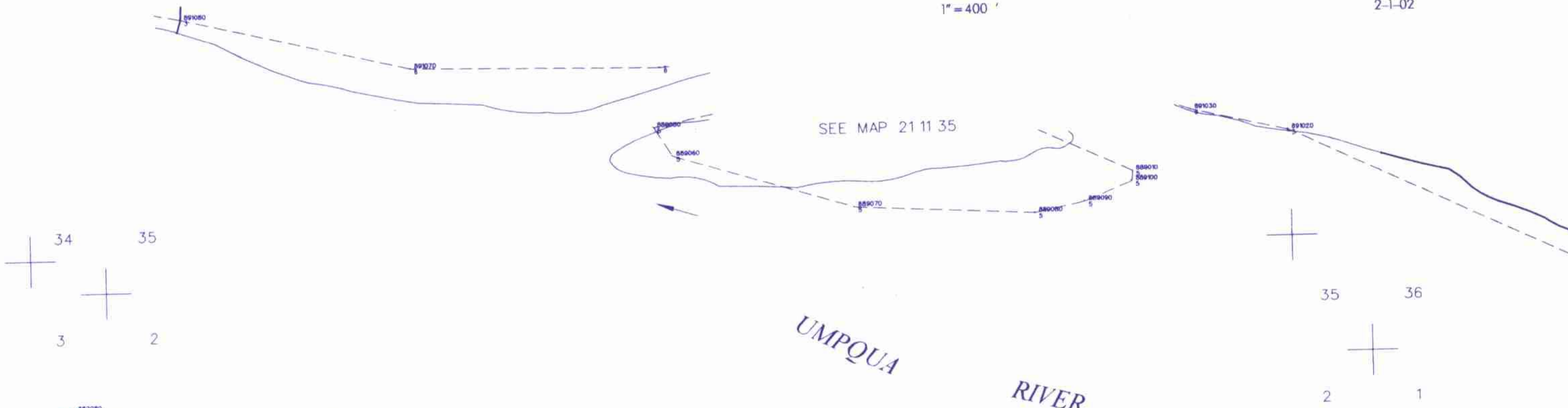
THIS MAP WAS PREPARED FOR
ASSESSMENT PURPOSE ONLY

SEC. 2 T.22S. R.11W. W.M.
DOUGLAS COUNTY

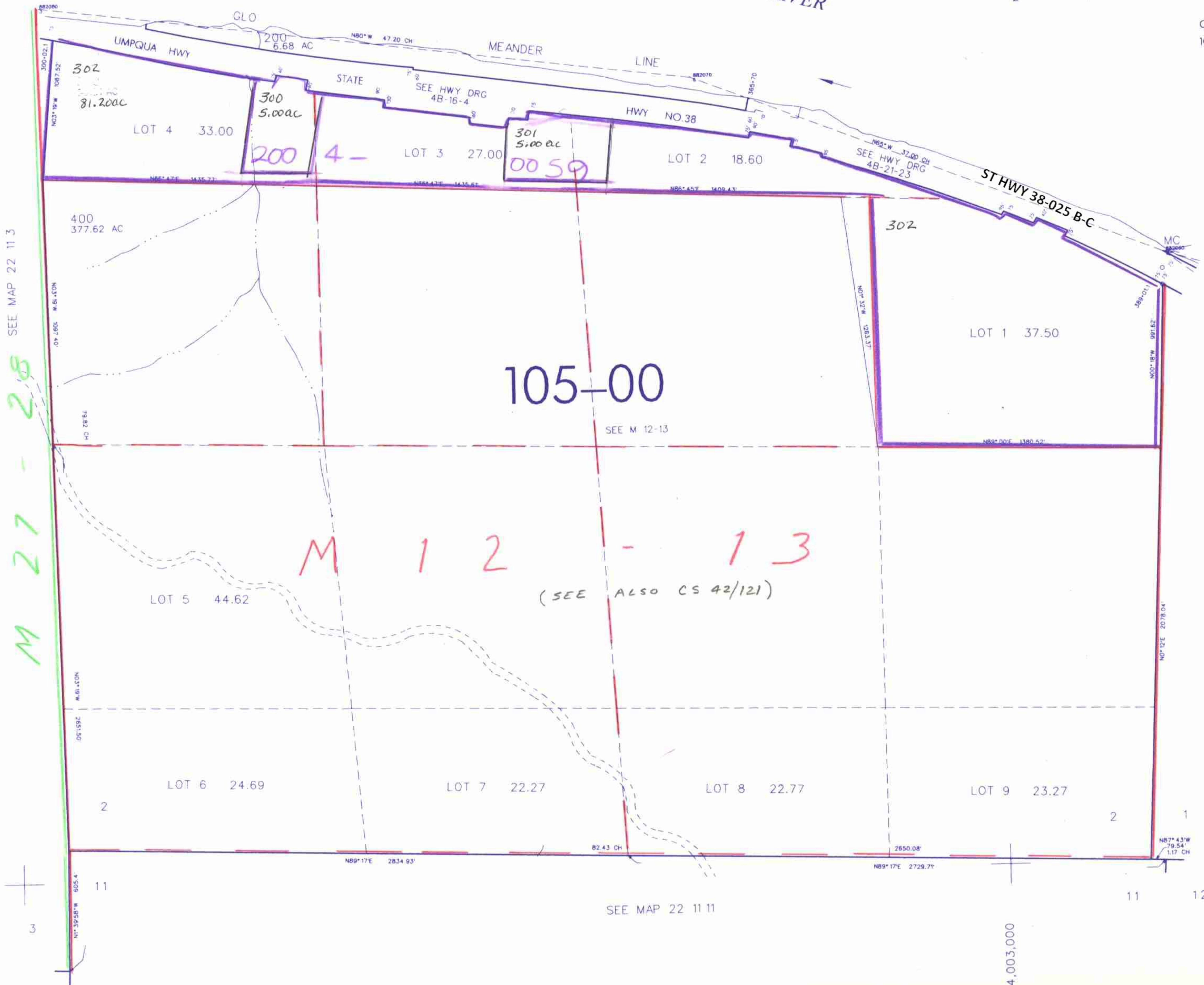
22 11 2

REVISED ON
2-1-02

1" = 400'



CANCELLED NO'S
100



SEE MAP 22 11 3

SEE MAP 22 11 1

SEE MAP 22 11 11

753,000

22 11 2
2/2002 JP
nw