

THIS MAP WAS PREPARED FOR ASSESSMENT PURPOSE ONLY.

SEC.1 T.22S. R.11W. W.M. DOUGLAS COUNTY

REVISED ON 11-21-18

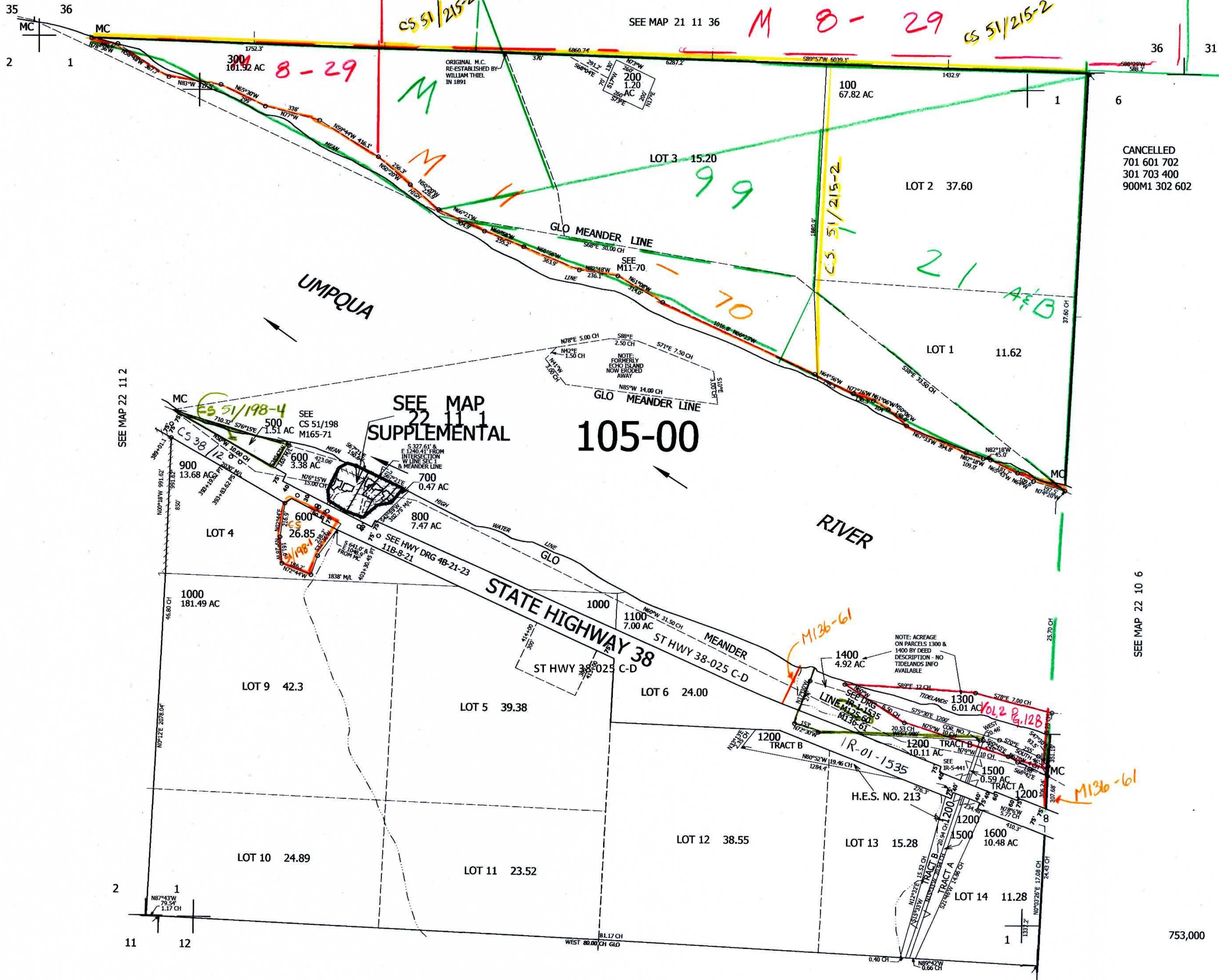
22 11 1

1" = 400' SEE BLM OPINION C.S. FILE 63/166 (NOT SCANNED)

SEE MAP 21 11 36

M 8-29

CS 51/215-2



CANCELLED 701 601 702 301 703 400 900M1 302 602

SEE MAP 22 11 2

SEE MAP SUPPLEMENTAL 22 11 1

105-00

SEE MAP 22 10 6

SEE MAP 22 11 00

753,000

11-29-18  
lev 87

22 11 1

4,009,000

6

7