

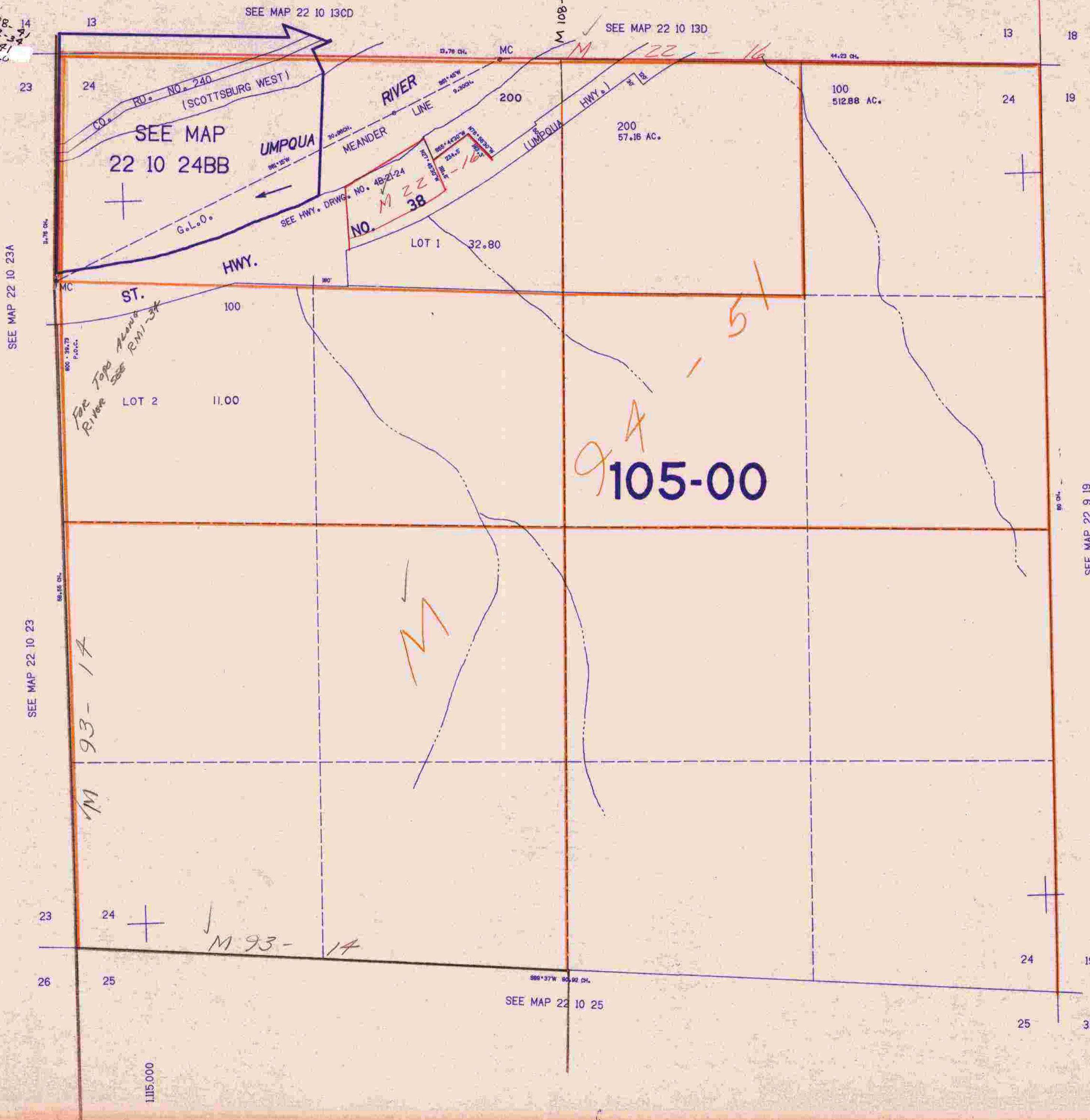
SECTION 24 T.22S. R.10W. W.M.
DOUGLAS COUNTY

22 10 24
& INDEX

THIS MAP WAS PREPARED FOR
ASSESSMENT PURPOSE ONLY.

1"=400'

M 108-41
M 107-34
M 98-41
M 93-20
M 93-16
M 92-81



SEE MAP 22 10 23A

SEE MAP 22 10 23

SEE MAP 22 10 25

SEE MAP 22 9 19

Top
River
Along
R.M. 34

9A-51
105-00

M 93-17

M 93-14

1115.000

736.000

22 10 24
& INDEX

3/83
JL