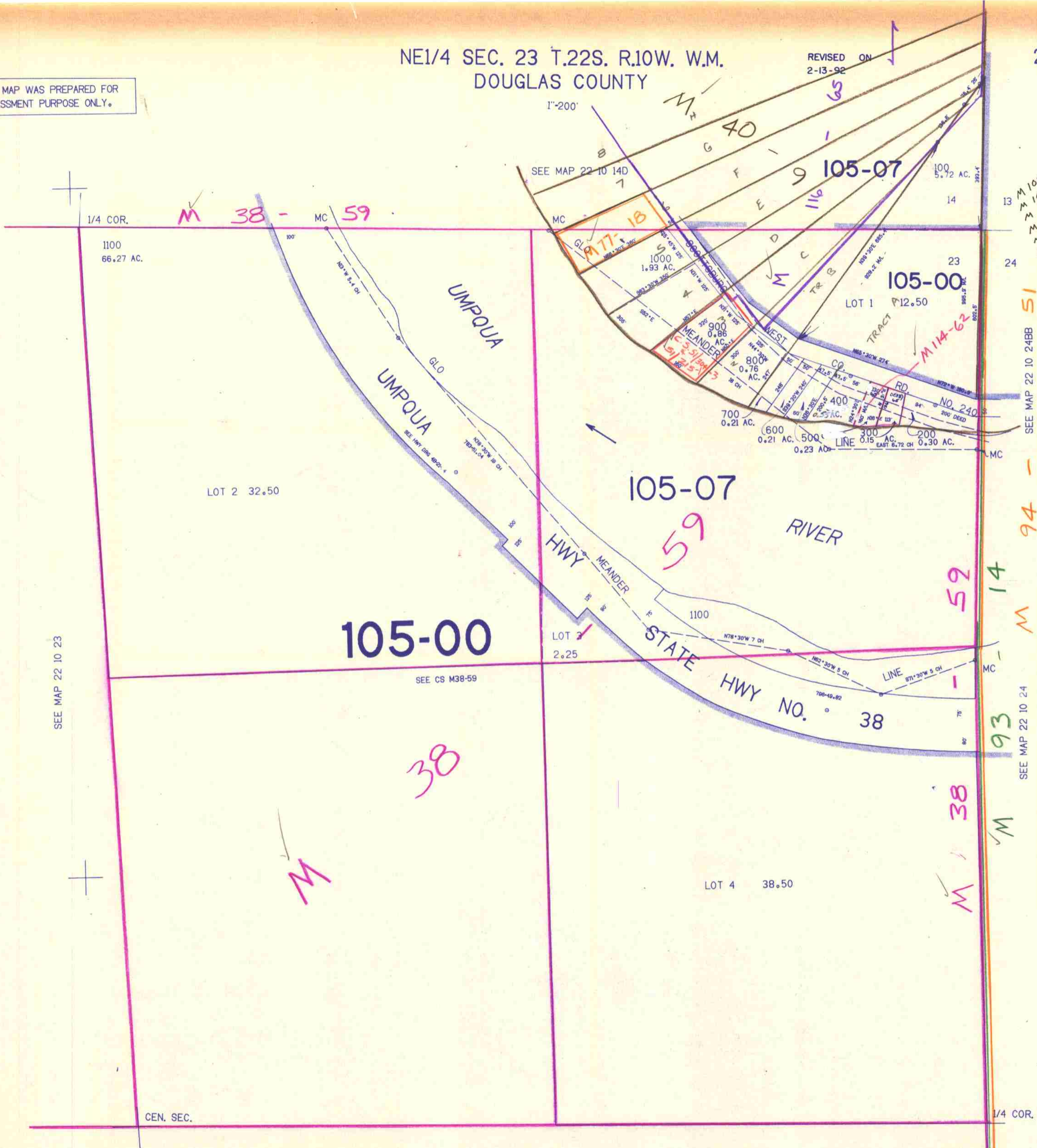


THIS MAP WAS PREPARED FOR ASSESSMENT PURPOSE ONLY.

NE1/4 SEC. 23 T.22S. R.10W. W.M. DOUGLAS COUNTY

REVISED ON 2-13-92

22 10 23A



SEE MAP 22 10 23

SEE CS M38-59

SEE MAP 22 10 24BB 51

SEE MAP 22 10 24

SEE MAP 22 10 23

1:112,000

22 10 23A

2-92 JP