

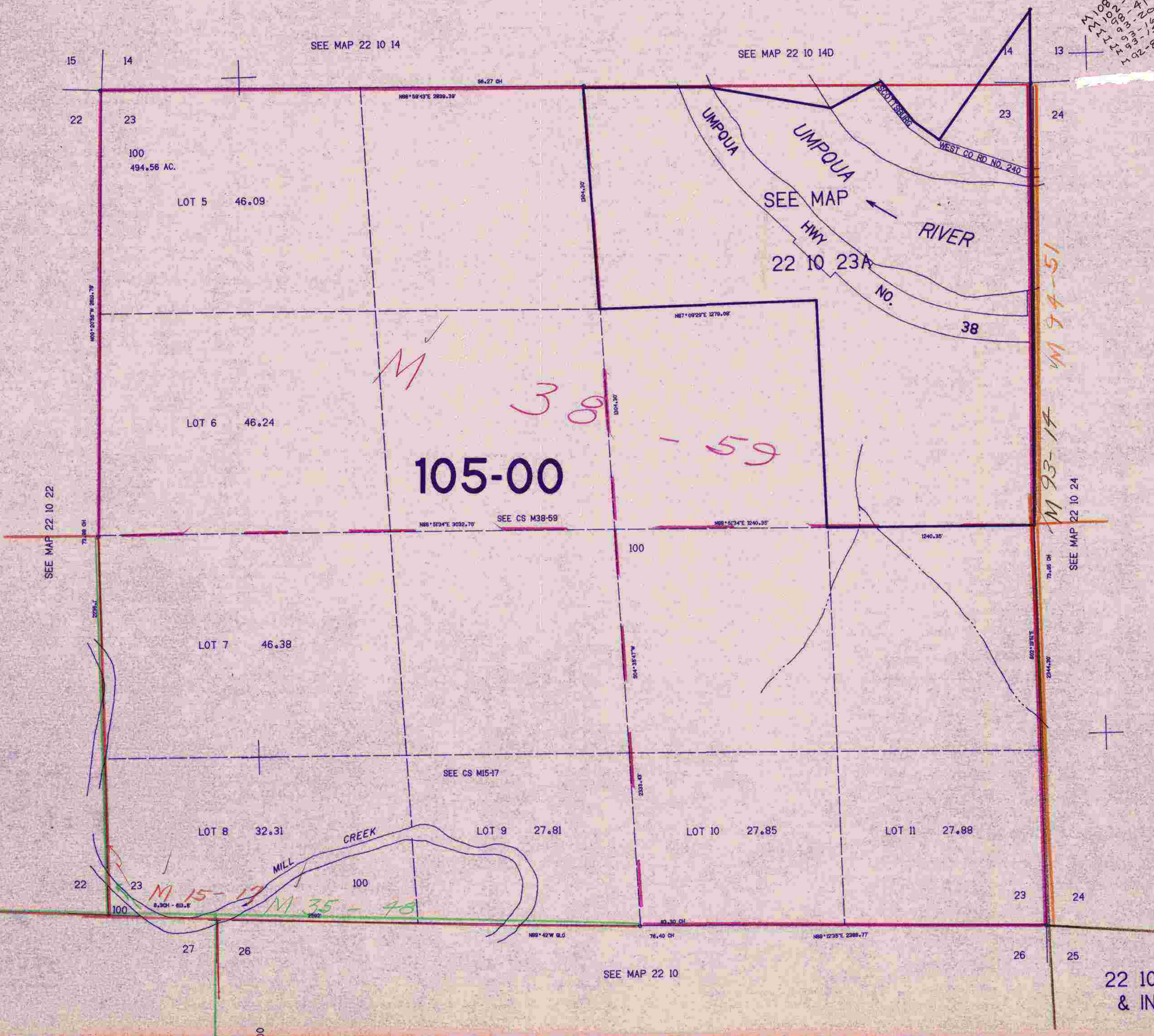
SECTION 23 T.22S. R.10W. W.M.  
DOUGLAS COUNTY

22 10 23  
& INDEX

THIS MAP WAS PREPARED FOR  
ASSESSMENT PURPOSE ONLY.

1"=400'

108-1-1  
108-1-2  
108-1-3  
108-1-4  
108-1-5  
108-1-6  
108-1-7  
108-1-8  
108-1-9  
108-1-10  
108-1-11  
108-1-12  
108-1-13  
108-1-14  
108-1-15  
108-1-16  
108-1-17  
108-1-18  
108-1-19  
108-1-20  
108-1-21  
108-1-22  
108-1-23  
108-1-24  
108-1-25  
108-1-26  
108-1-27  
108-1-28  
108-1-29  
108-1-30  
108-1-31  
108-1-32  
108-1-33  
108-1-34  
108-1-35  
108-1-36  
108-1-37  
108-1-38  
108-1-39  
108-1-40



105-00

38-59

M 15-17  
M 35-48

M 94-51

M 93-17

22 10 23  
& INDEX

3/8/78