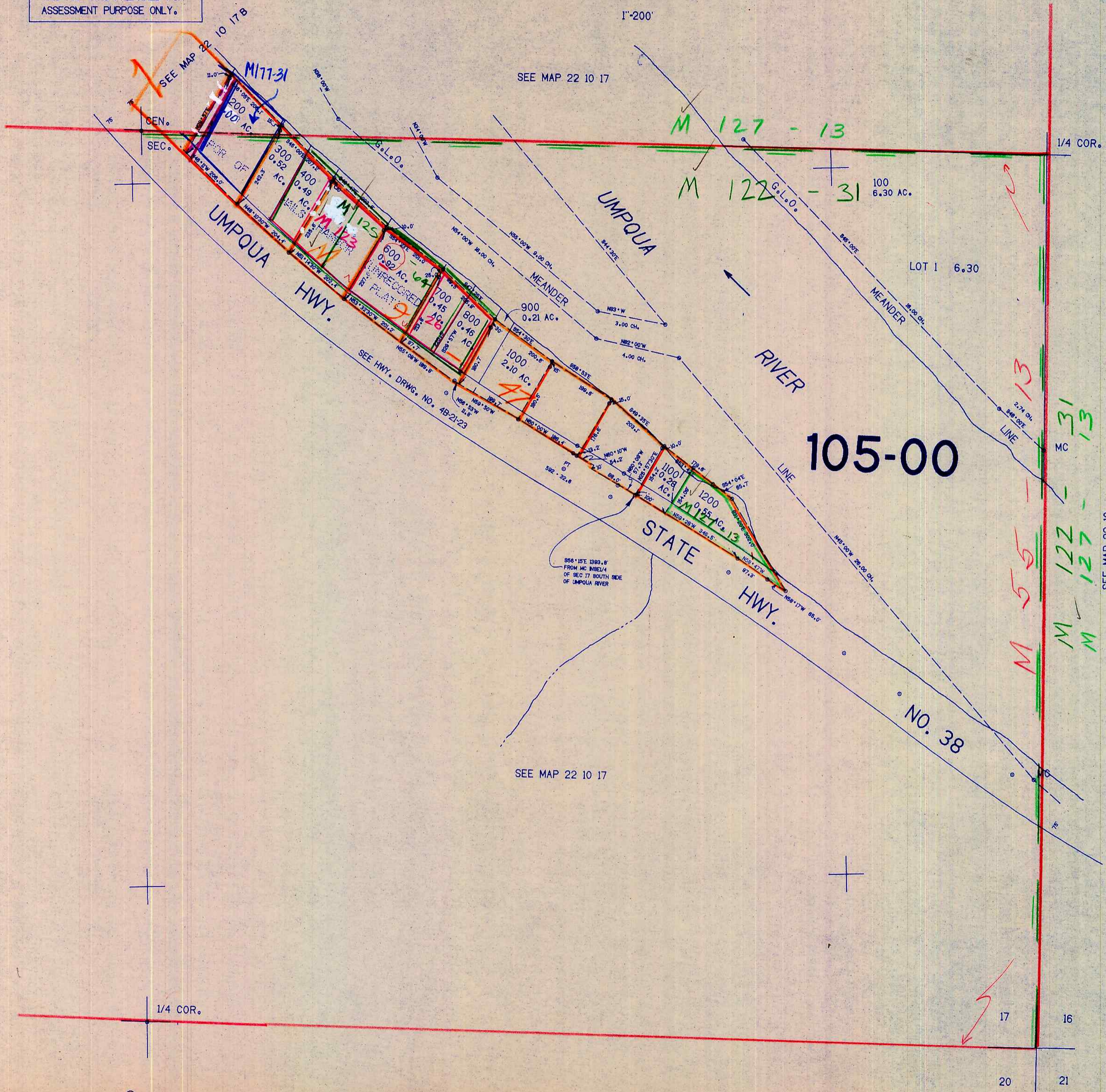


SE1/4 SEC. 17 T.22S. R.10W. W.M.
DOUGLAS COUNTY

22 10 17D

THIS MAP WAS PREPARED FOR
ASSESSMENT PURPOSE ONLY.

1"=200'



SEE MAP 22 10 17

1/4 COR.

LOT 1 6.30

105-00

STATE HWY.
NO. 38

SEE MAP 22 10 17

742.000

1/4 COR.

17

16

20

21

1096.000

22 10 17D

3/13/23