

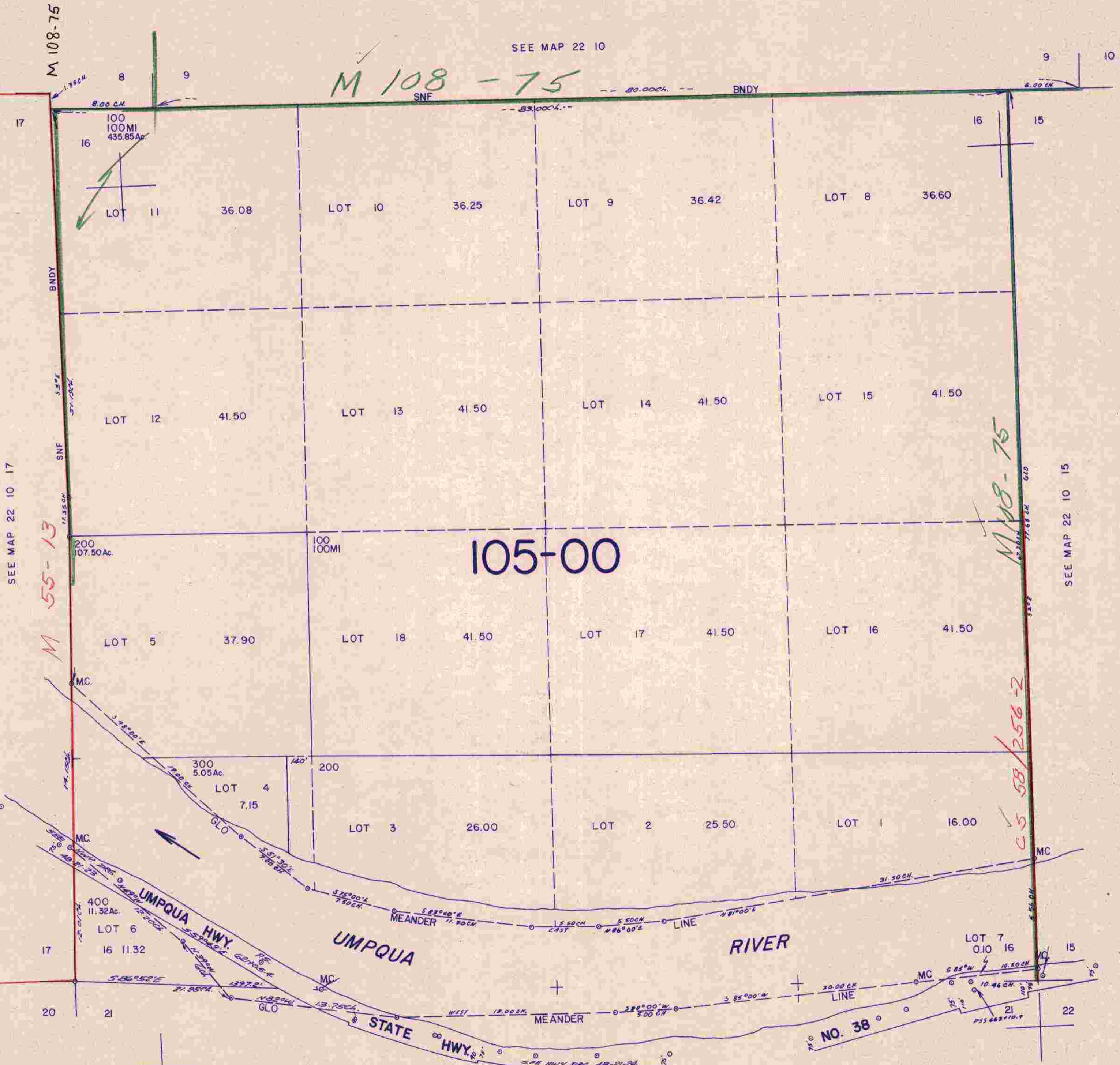
THIS MAP WAS PREPARED FOR ASSESSMENT PURPOSE ONLY.

SECTION 16 T.22S. R.10W. W.M.  
DOUGLAS COUNTY  
1" = 400'

22 10 16

SEE MAP 22 10

M 108 - 75



SEE MAP 22 10 17

SEE MAP 22 10 15

SEE MAP 22 10 21

22 10 16

3/8/18