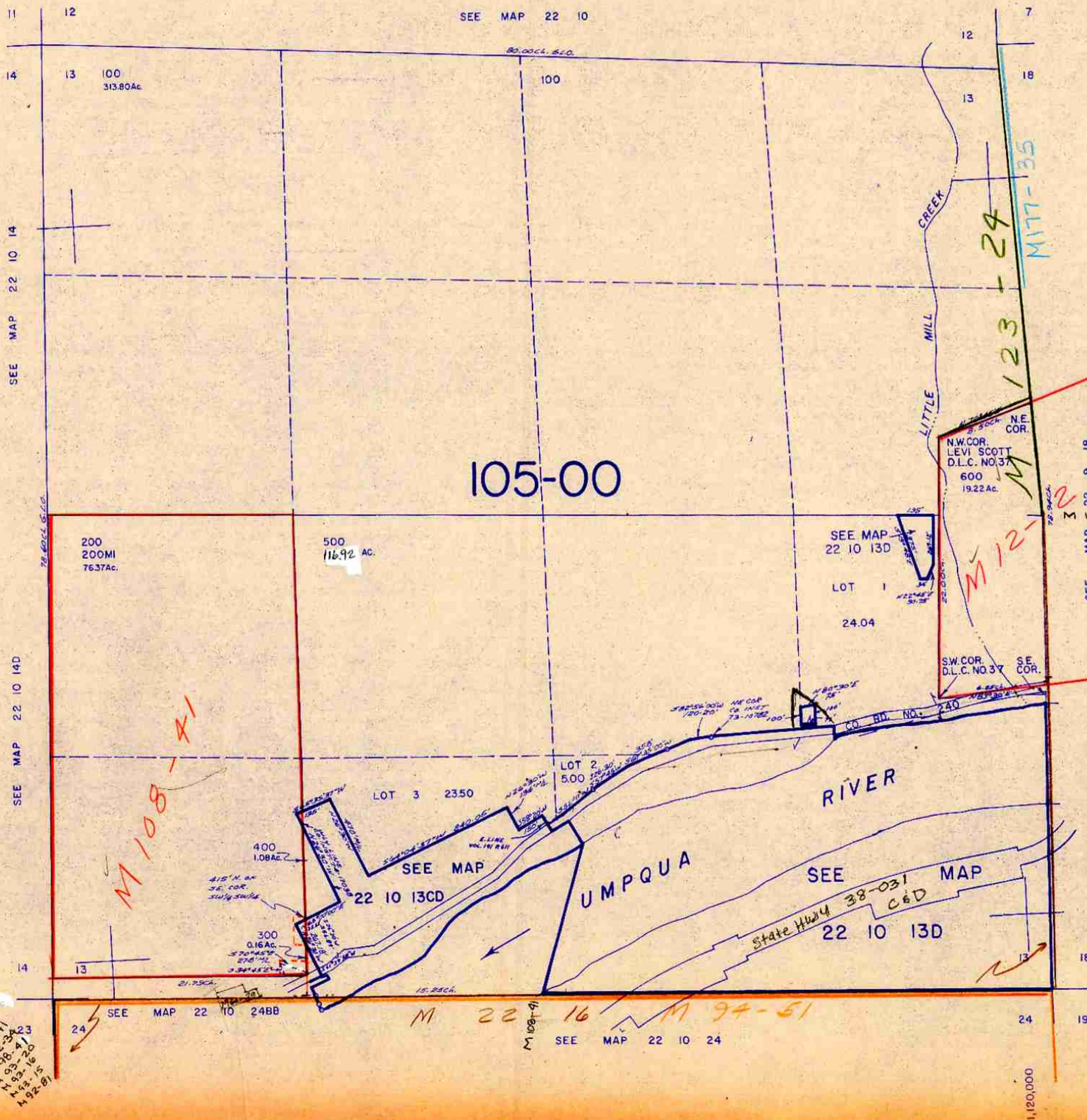


THIS MAP WAS PREPARED FOR
ASSESSMENT PURPOSE ONLY.

SECTION 13 T.22S. R.10W. W.M.
DOUGLAS COUNTY
1" = 400'

22 10 13
& INDEX



M 108-41
M 102-34-23
M 98-41
M 93-20
M 77-12
M 71-12
M 69-12
M 67-12
M 65-12
M 63-12
M 61-12
M 59-12
M 57-12
M 55-12
M 53-12
M 51-12
M 49-12
M 47-12
M 45-12
M 43-12
M 41-12
M 39-12
M 37-12
M 35-12
M 33-12
M 31-12
M 29-12
M 27-12
M 25-12
M 23-12
M 21-12
M 19-12
M 17-12
M 15-12
M 13-12
M 11-12
M 9-12
M 7-12
M 5-12
M 3-12
M 1-12

22 10 13
& INDEX