

THIS MAP WAS PREPARED FOR ASSESSMENT PURPOSE ONLY.

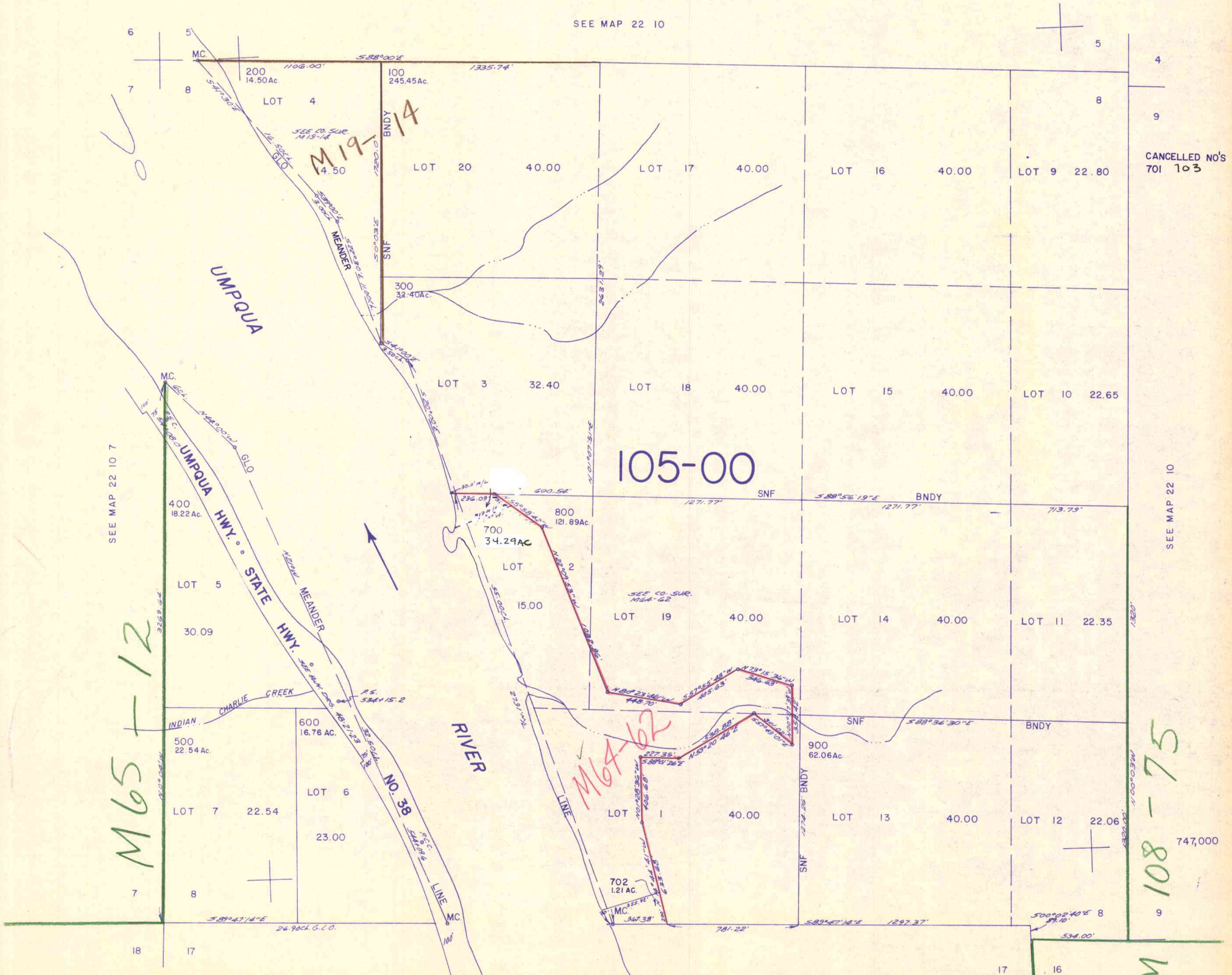
SECTION 8 T.22S. R.10W. W.M. DOUGLAS COUNTY

REVISED ON 8-26-92

22 10 8

1" = 400'

SEE MAP 22 10



CANCELLED NO'S 701 103

SEE MAP 22 10 7

SEE MAP 22 10

SEE MAP 22 10 17

M65-112

M64-102

M108-75

22 10 8

8/92

1,099,000