

SECTION 6 T.22 S. R.10 W. W.M.
DOUGLAS COUNTY

THIS MAP WAS PREPARED FOR
ASSESSMENT PURPOSE ONLY.

1" = 400'

SEE MAP 21 10

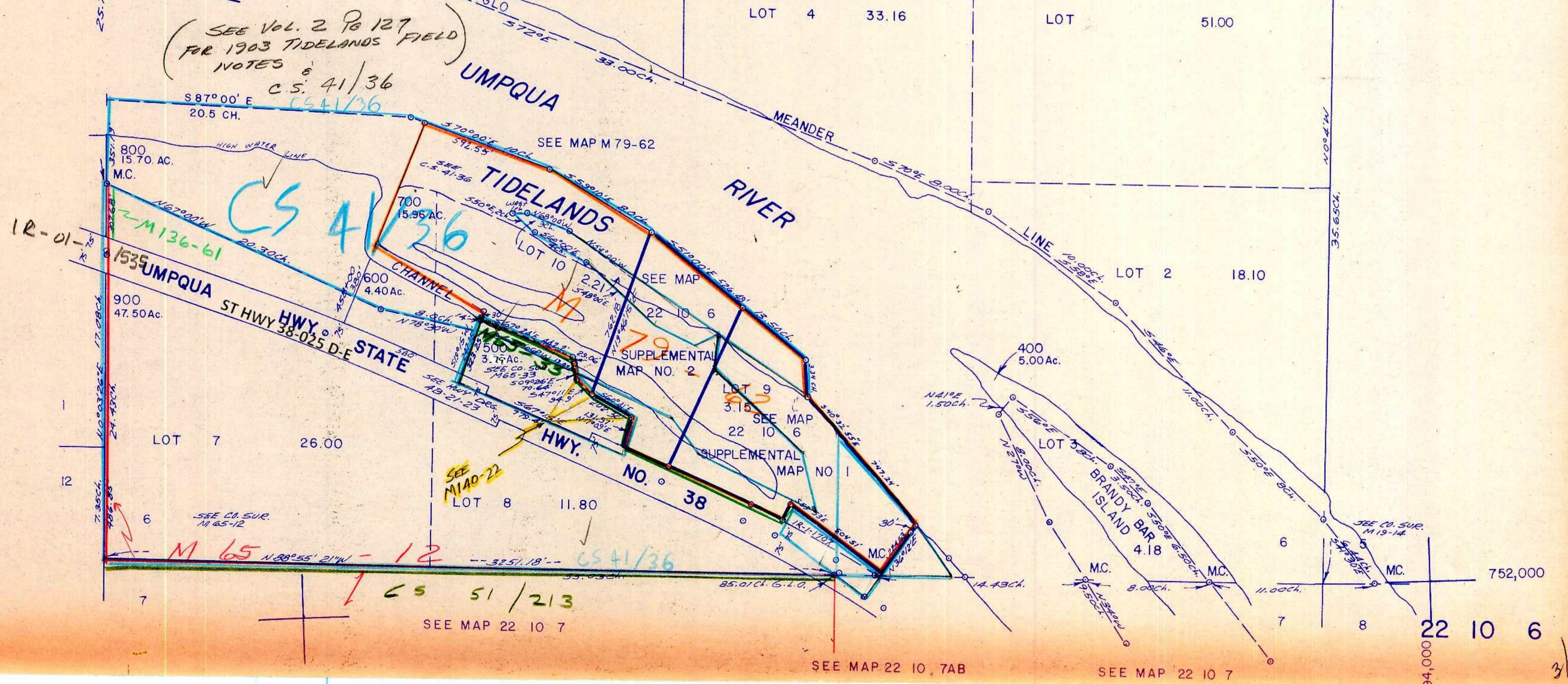
SEE RESURVEY 21-10
45.50CH.

M 99-21 A+B

SEE MAP 22 11

SEE MAP 22 10

105-00



SEE VOL. 2 Pg 127
FOR 1903 TIDELANDS FIELD
NOTES
C.S. 41/36

CS 41/36

M 136-61

SEE M 140-22

M 65

CS 51/213

3/18/83