

T.22S. R.10W. W.M.
DOUGLAS COUNTY

22 10

& INDEX

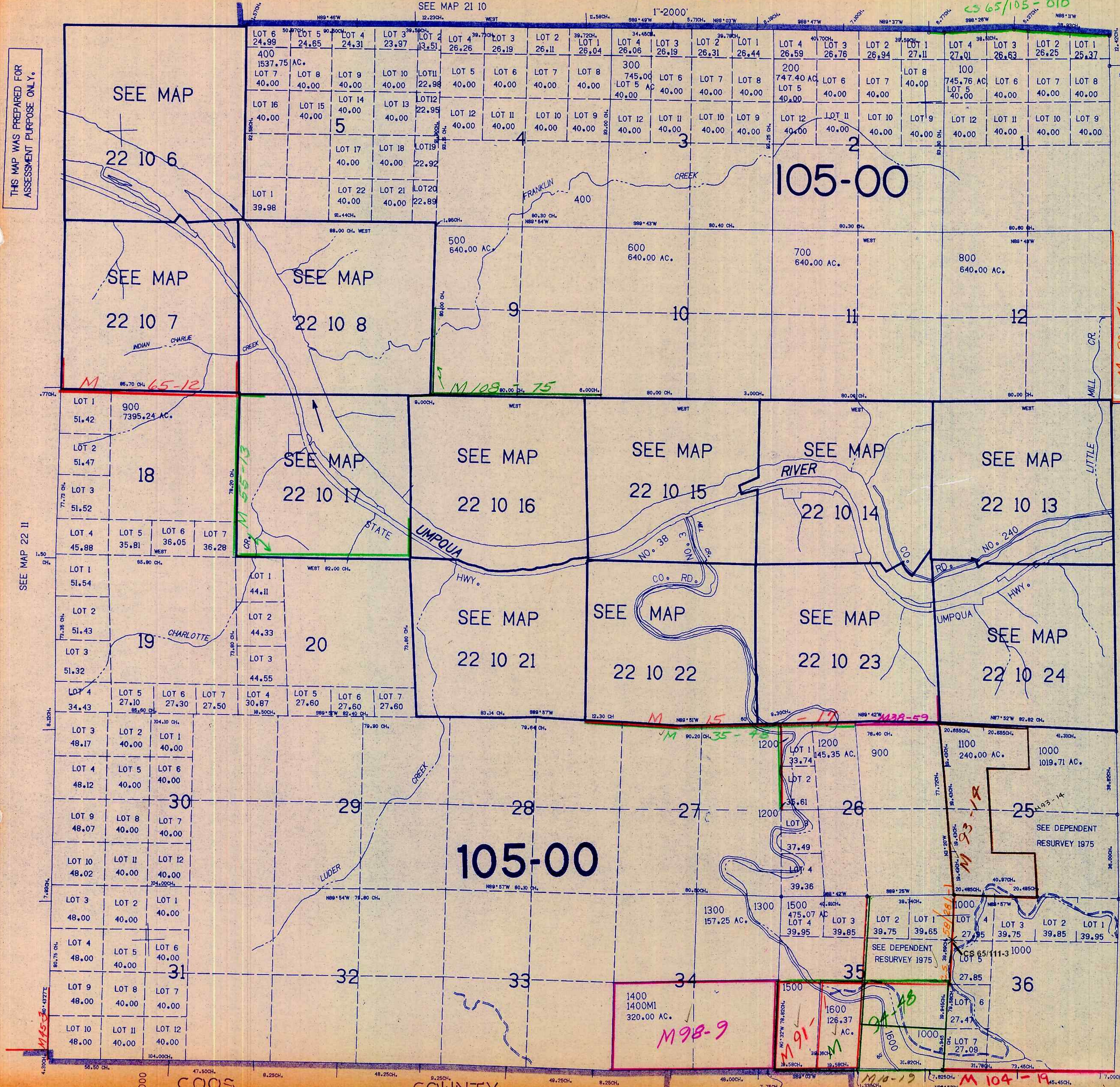
CS 65/105-010

THIS MAP WAS PREPARED FOR
ASSESSMENT PURPOSE ONLY.

SEE MAP 22 11

SEE MAP 22 9

22 10
& INDEX



SEE MAP 23 10

3/18/21