

THIS MAP WAS PREPARED FOR
ASSESSMENT PURPOSE ONLY.

NW1/4 SW1/4 SEC.18 T.22S. R.9W. W.M.
DOUGLAS COUNTY
1" = 100'

REVISED ON
4-15-19
8-15-19

22 9 18CB

1/4 COR

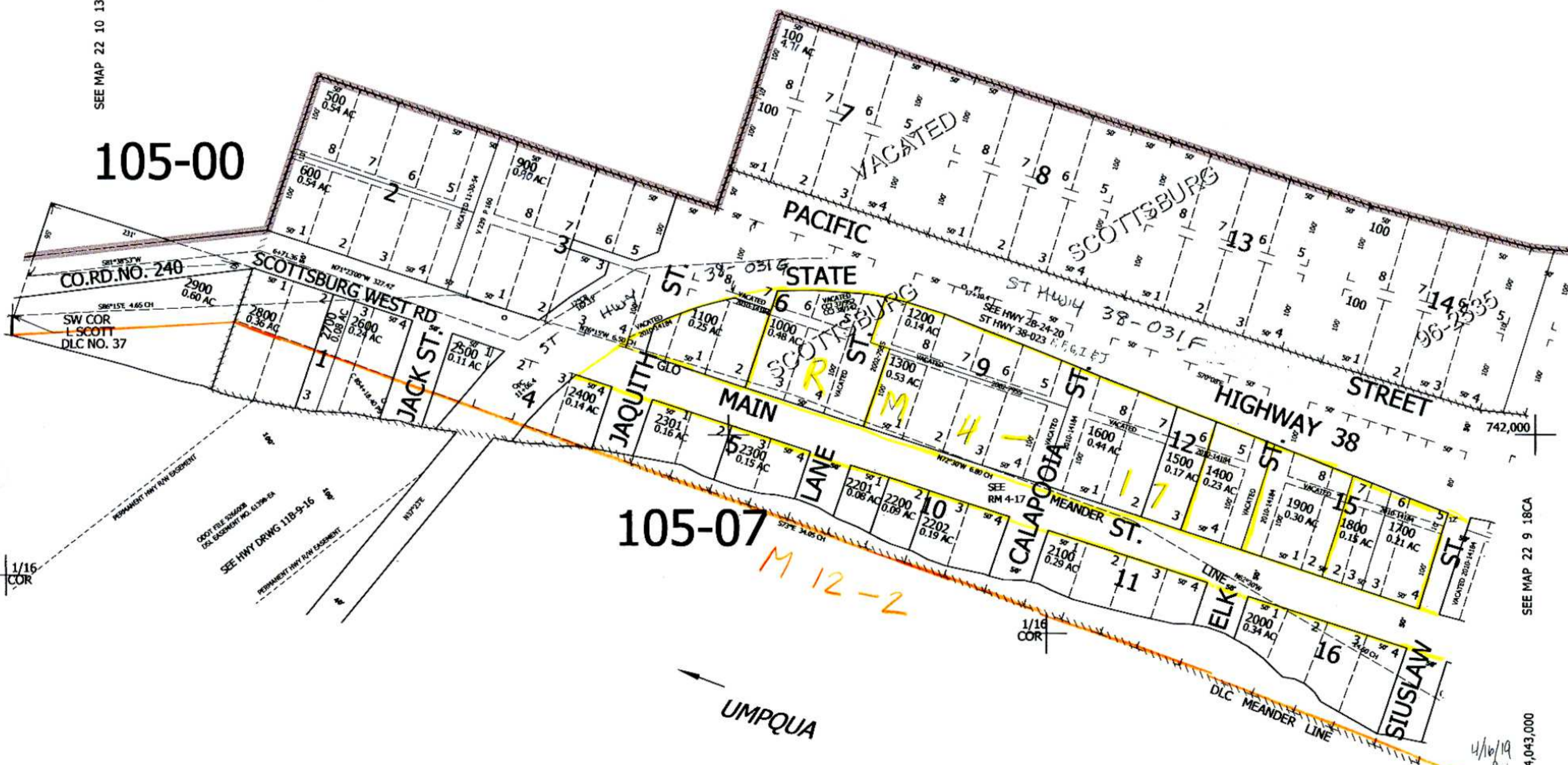
1/16 COR

CANCELLED NO'S
200 300 400
700 800 100M1
3100M1 3100

SEE MAP 22 9 18

SEE MAP 22 10 13

105-00



105-07

M 12-2

UMPQUA

RIVER

SEE MAP 22 9 18

22 9 18CB

SEE MAP 22 9 18CA

4/16/19
4,043,000