

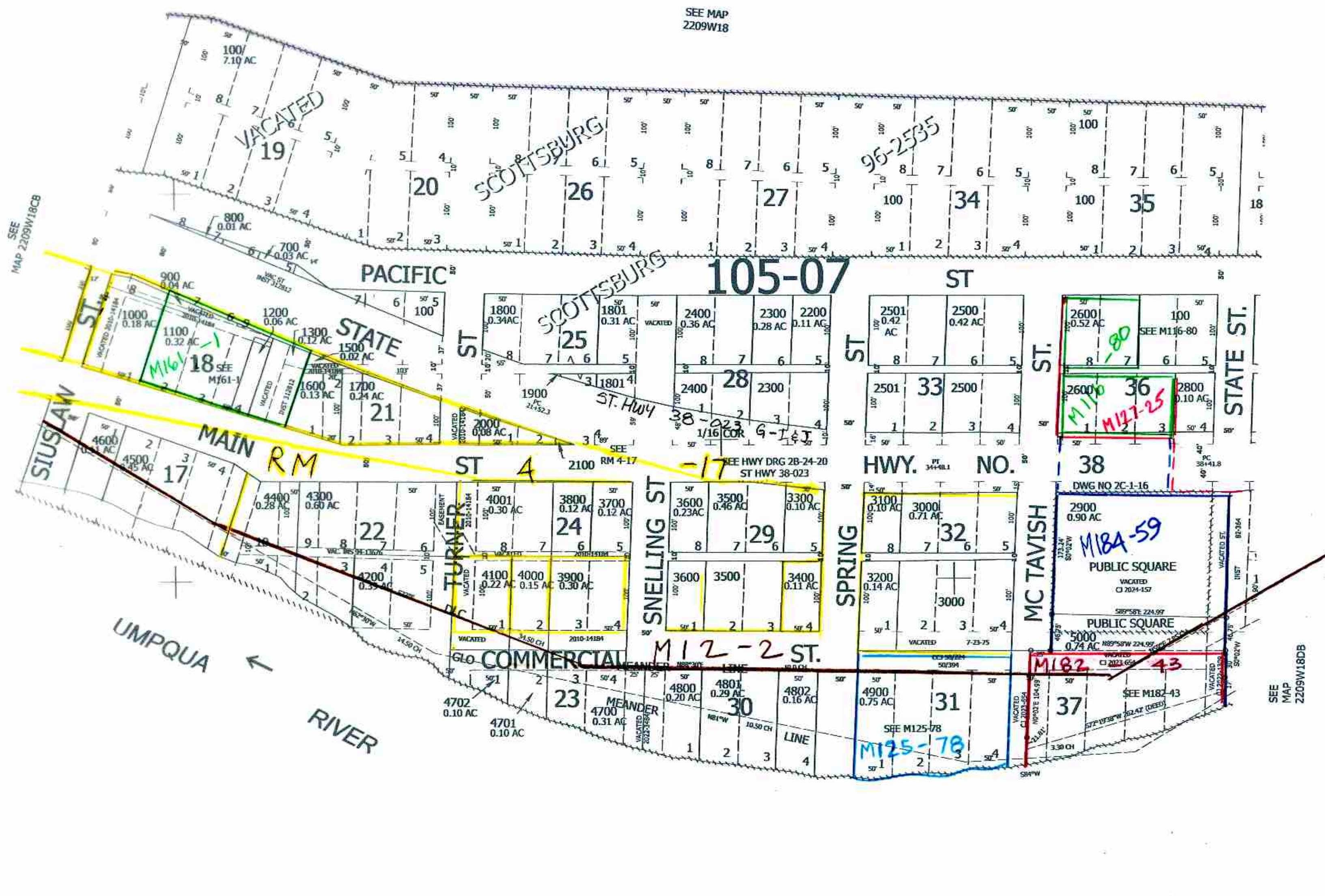
THIS MAP WAS PREPARED FOR ASSESSMENT PURPOSE ONLY.

Upper Left:
123°49'16"W 43°39'23"N
4042609E 742599N ft

NE1/4 SW1/4 SEC.18 T.22S. R.09W. W.M.
DOUGLAS COUNTY
1" = 100'

Date Exported 2025-02-18

CANCELLED NOS:
200 300 400
500 600 1400
2700 2900A1 100M1
2901 2902 2903



SEE MAP
2209W18

SEE
MAP 2209W18CB

SEE
MAP
2209W18CB

SEE
MAP 2209W18

6/2023
JCV
220918CA

Lower Right:
123°48'48"W 43°39'7"N
4044586E 740879N ft