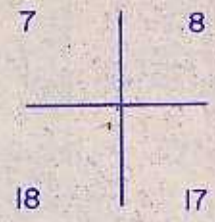
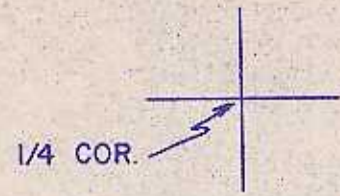


THIS MAP WAS PREPARED FOR
ASSESSMENT PURPOSE ONLY.

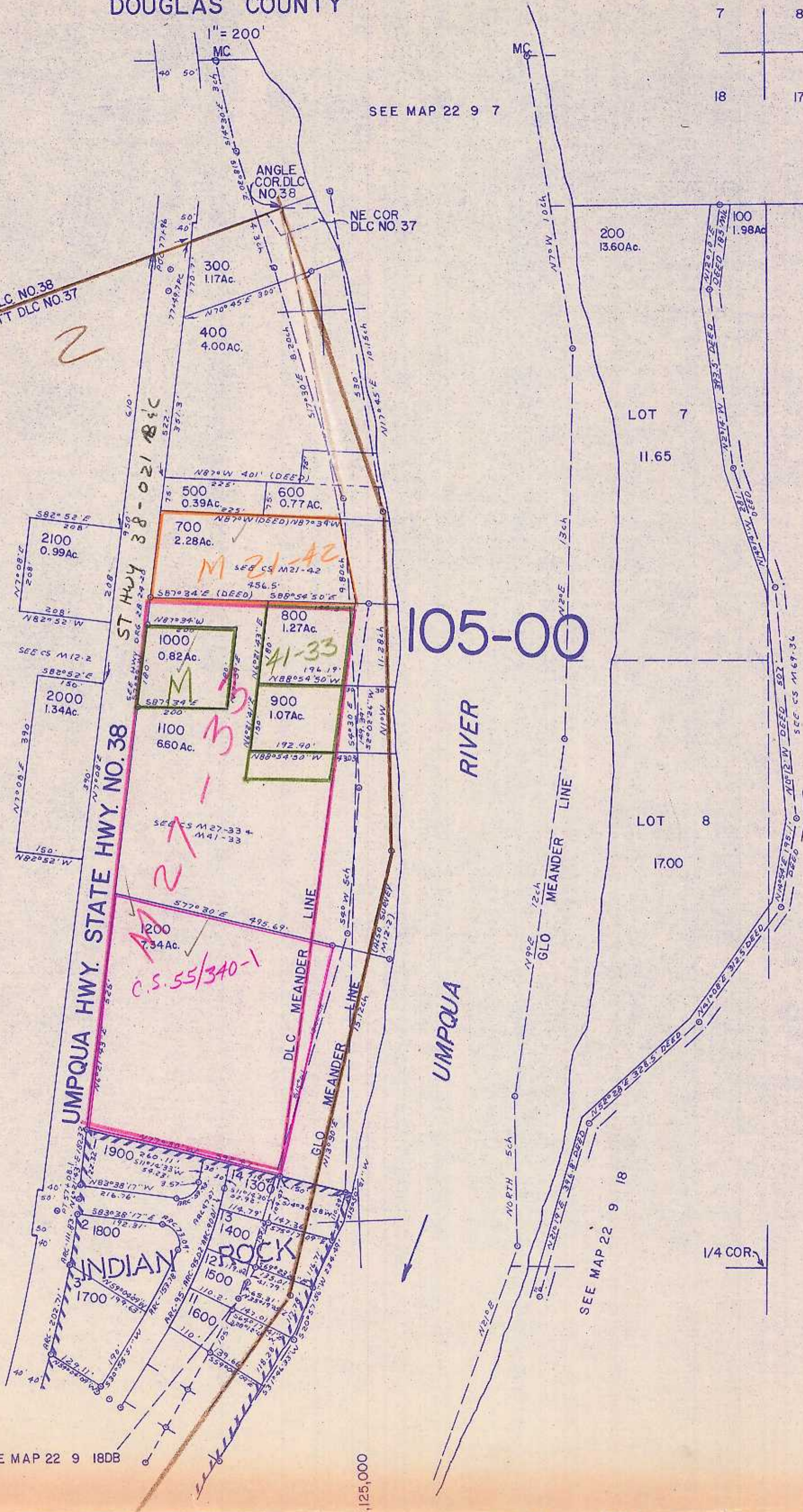
NE 1/4 SEC. 18 T.22S. R. 9 W. W.M
DOUGLAS COUNTY

22 9 18A



M 12 - 2

SEE MAP 22 9 7



SEE MAP 22 9 18

SEE MAP 22 9 17

743,000

CEN. SEC.

SEE MAP 22 9 18

SEE MAP 22 9 18DB

SEE MAP 22 9 18

22 9 18A

4/13/21