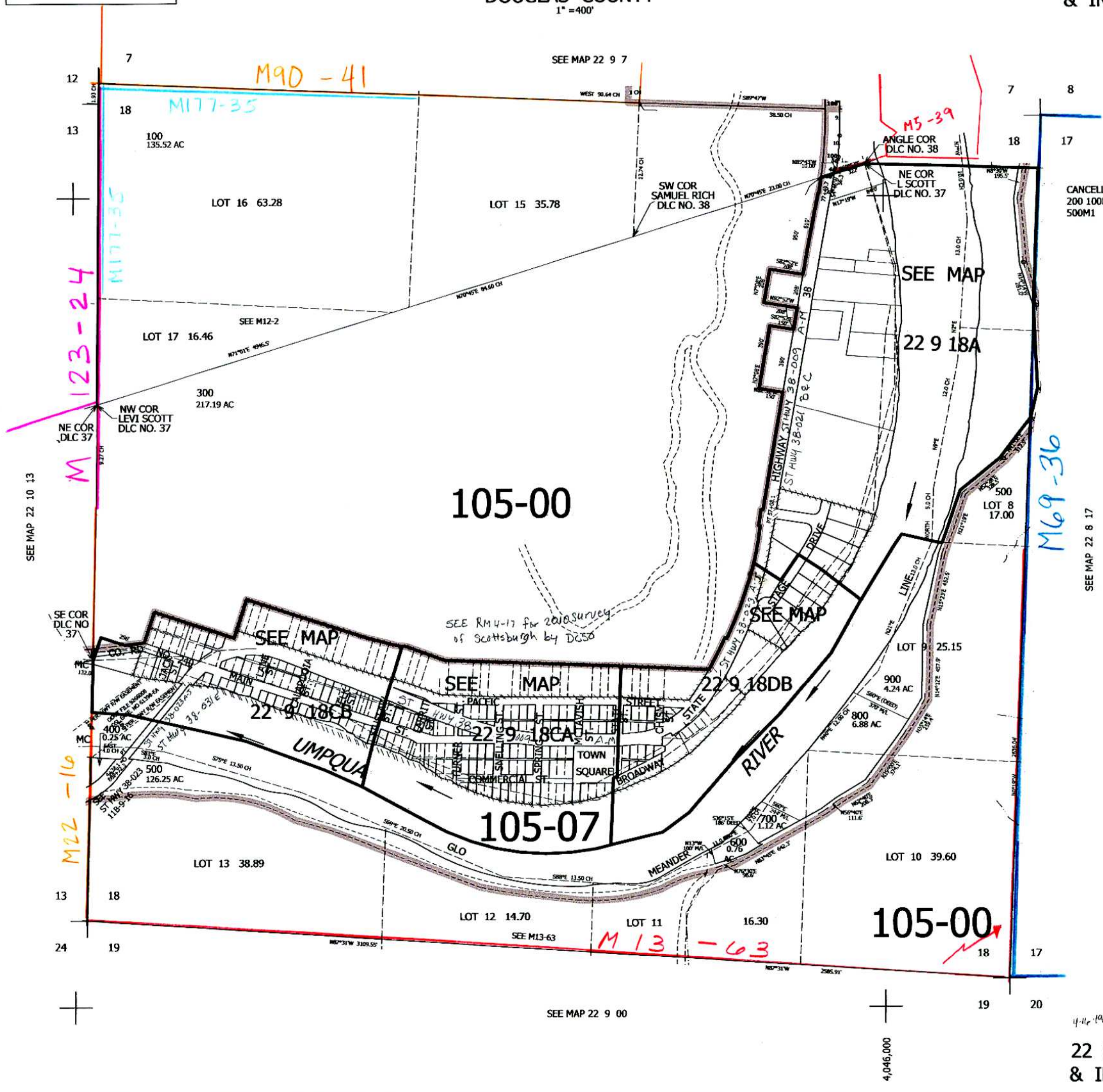


THIS MAP WAS PREPARED FOR ASSESSMENT PURPOSE ONLY.

SEC.18 T.22S. R.9W. W.M.
DOUGLAS COUNTY
1" = 400'

REVISED ON
4-15-19

22 9 18
& INDEX



CANCELLED NO'S
200 100M1 300M1
500M1

M69-36

SEE MAP 22 8 17

740,000
4-11-19 85

22 9 18
& INDEX