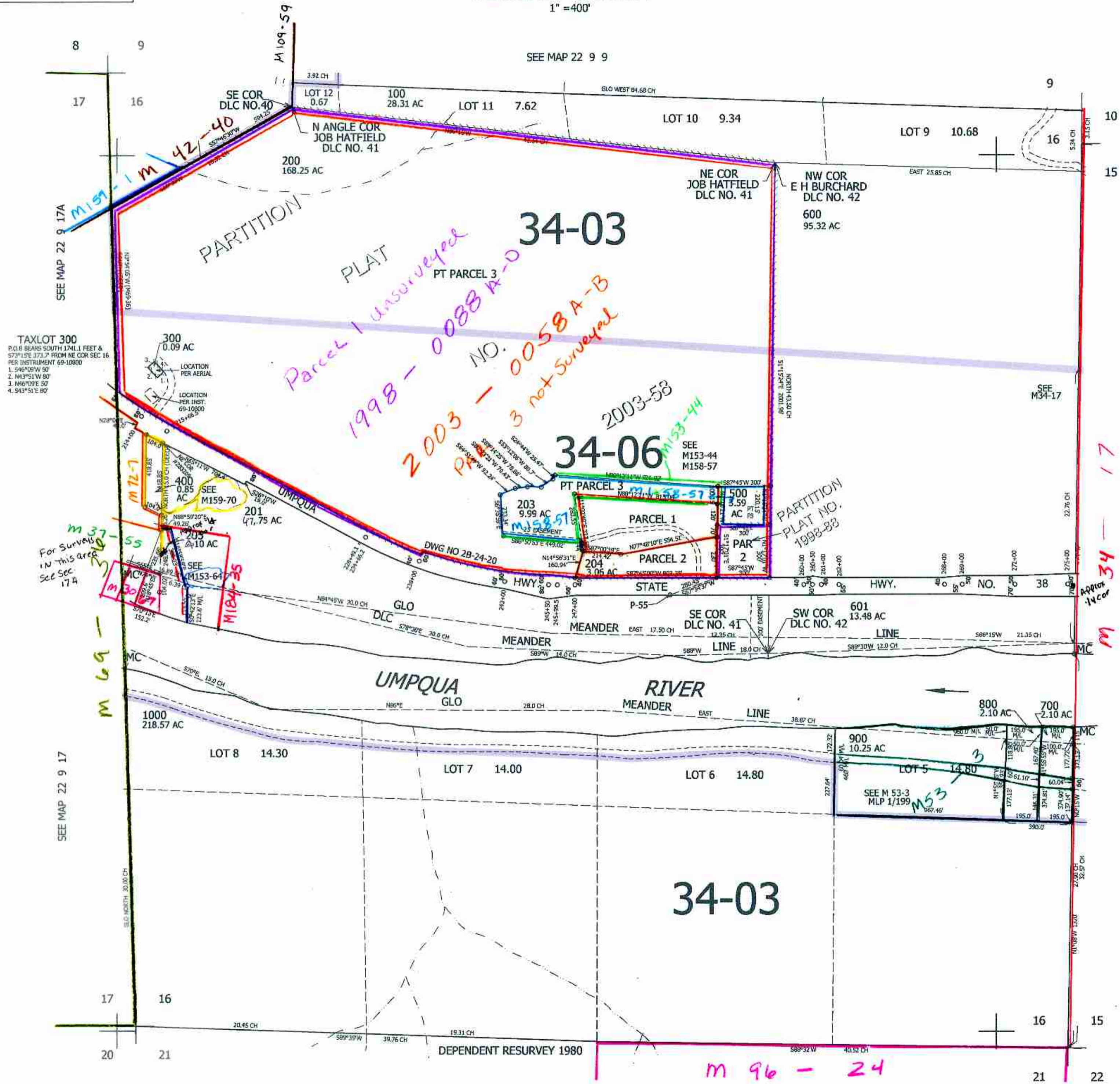


THIS MAP WAS PREPARED FOR ASSESSMENT PURPOSE ONLY.

SEC.16 T.22S. R.9W. W.M. DOUGLAS COUNTY 1" = 400'

REVISED ON 3-1-11

22 9 16



CANCELLED NO'S 1000M1 202 206 207

SEE MAP 22 9 15

740,000

SEE MAP 22 9 00

4,057,000

CM 3/1/11

22 9 16