

THIS MAP WAS PREPARED FOR
ASSESSMENT PURPOSE ONLY

SEC. 14 T.22S. R. 9W W.M.
DOUGLAS COUNTY

22 9 14

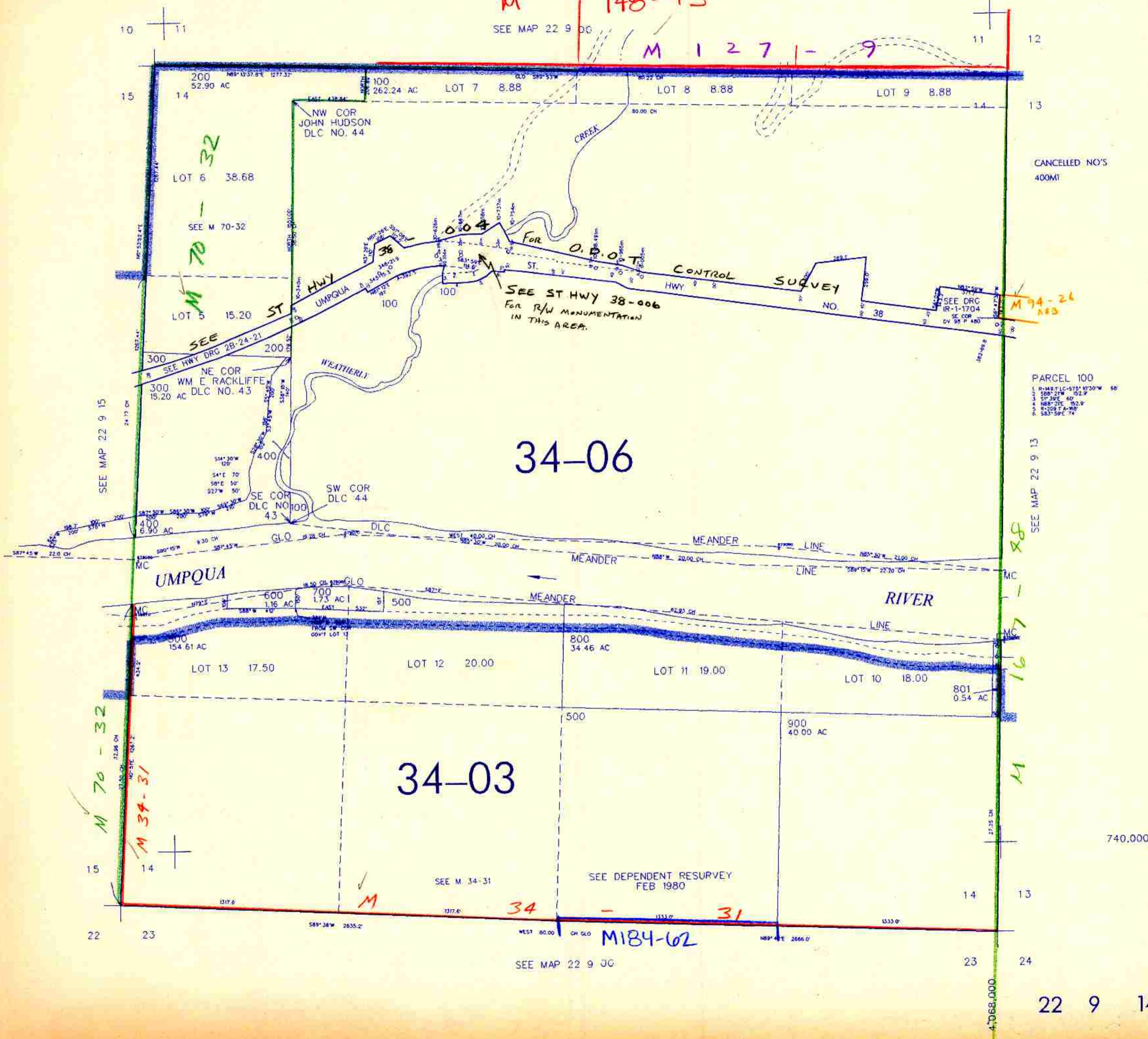
1" = 400'

REVISED ON
5-1-98

M 148-73

SEE MAP 22 9 00

M 127-9



22 9 14

5/98 JP
21