

THIS MAP WAS PREPARED FOR ASSESSMENT PURPOSE ONLY.

SE1/4 SEC.8 T.22S. R.9W. W.M.
DOUGLAS COUNTY

1" = 200'

REVISED ON
3-2-11

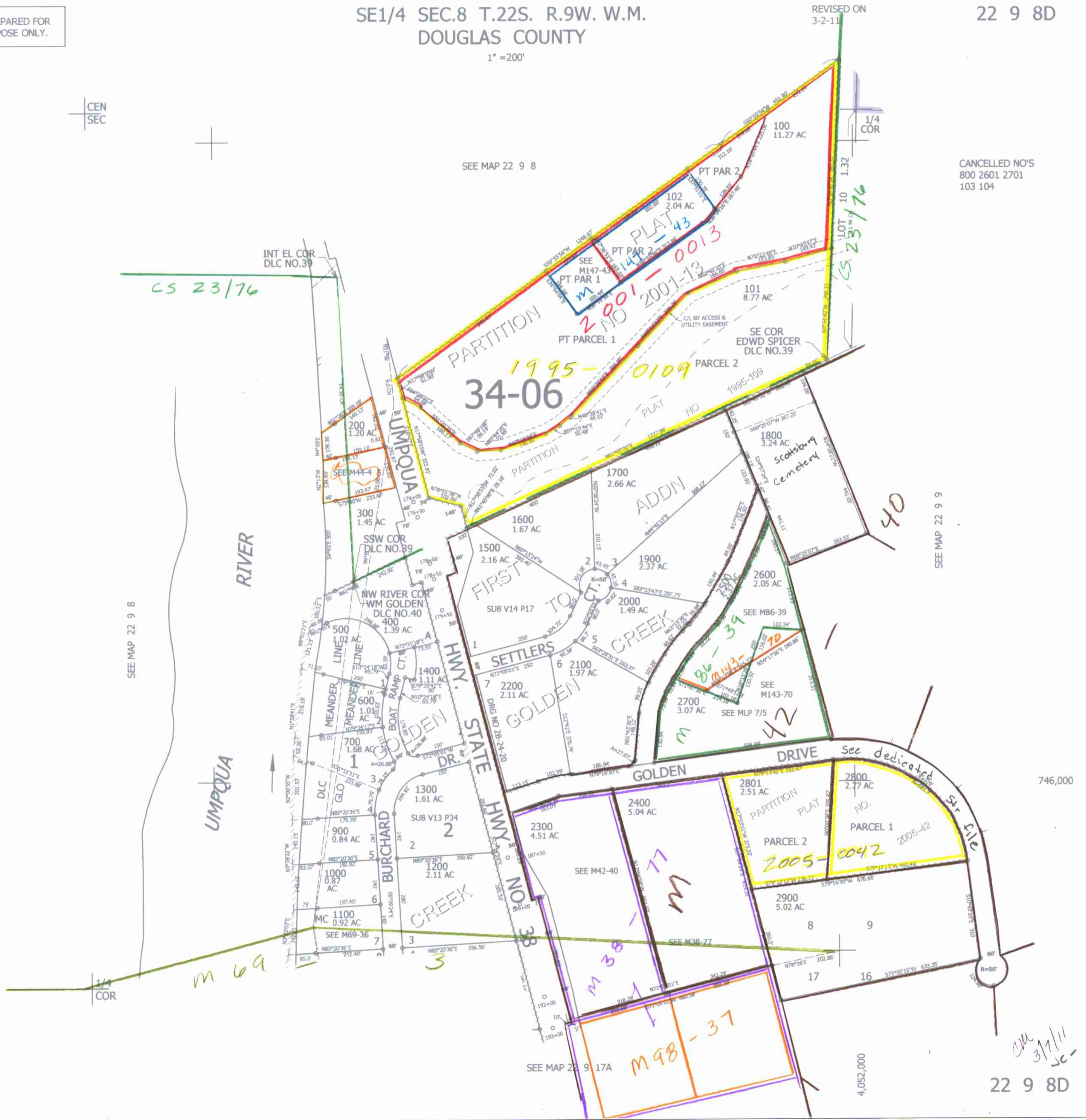
22 9 8D

CEN
SEC



SEE MAP 22 9 8

CANCELLED NO'S
800 2601 2701
103 104



SEE MAP 22 9 8

SEE MAP 22 9 9

746,000

SEE MAP 22 9 17A

4,052,000

3/17/11
J.C.

22 9 8D