

THIS MAP WAS PREPARED FOR ASSESSMENT PURPOSE ONLY.

NE1/4 SEC.8 T.22S. R.9W. W.M.
DOUGLAS COUNTY

REVISED ON
3-2-11

22 9 8A

1" = 200'

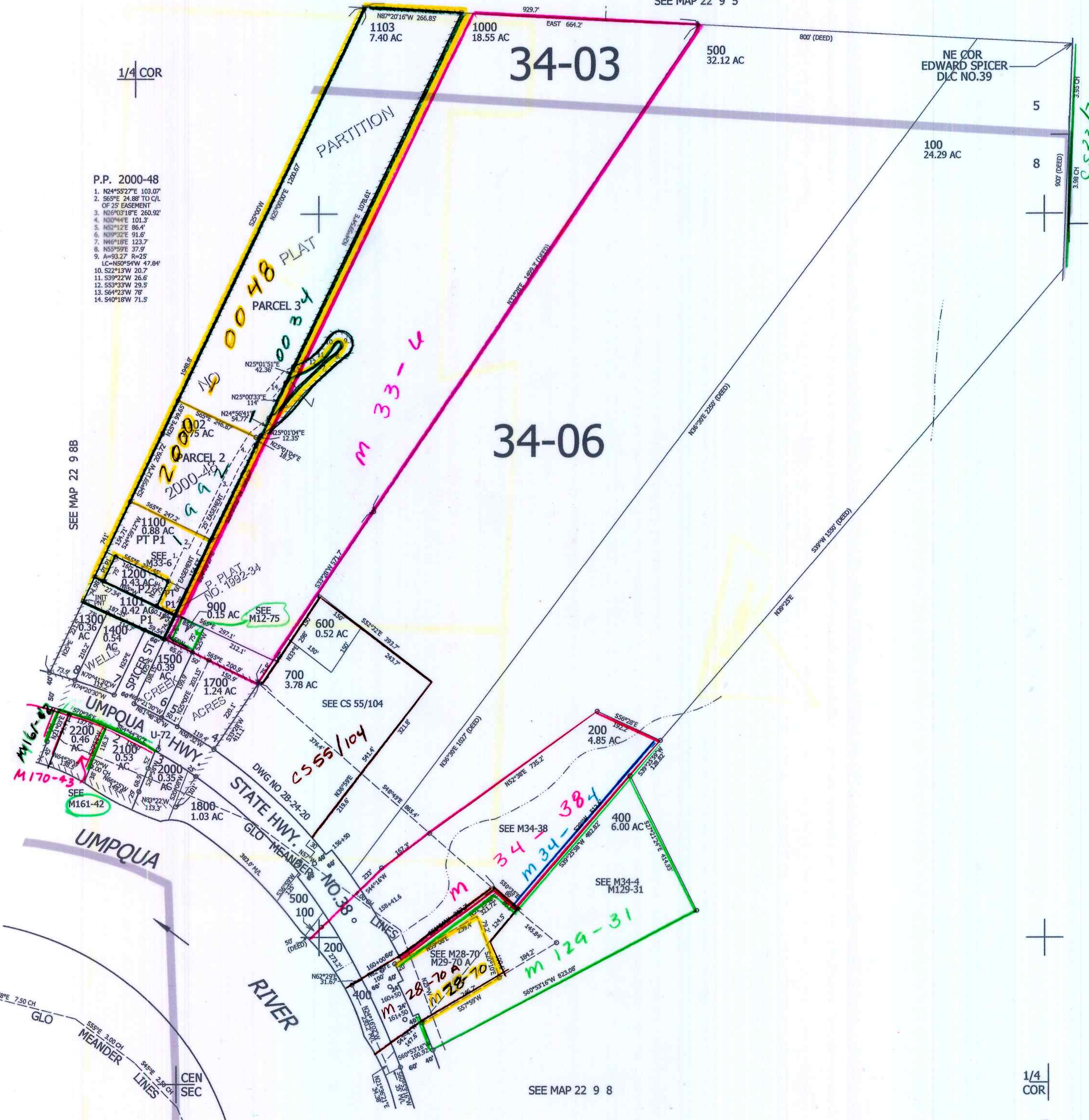
SEE MAP 22 9 5

1/4 COR

P.P. 2000-48

1. N24°55'27"E 103.07'
2. S65°E 24.88' TO C/L OF 25' EASEMENT
3. N26°03'18"E 260.92'
4. N50°44'E 101.3'
5. N52°12'E 85.4'
6. N39°32'E 91.6'
7. N46°18'E 123.7'
8. N55°49'E 37.9'
9. A=93.27 R=25 LC=N50°54'W 47.84'
10. S22°13'W 20.7'
11. S39°22'W 26.6'
12. S53°33'W 29.5'
13. S64°23'W 78'
14. S40°18'W 71.5'

SEE MAP 22 9 8B



CANCELLED NO'S
1600 900M1 300
800 1900 1104

SEE MAP 22 9 9

748,500

1/4 COR

4,052,000

cm
3/8/11
JC

22 9 8A