

THIS MAP WAS PREPARED FOR ASSESSMENT PURPOSE ONLY.

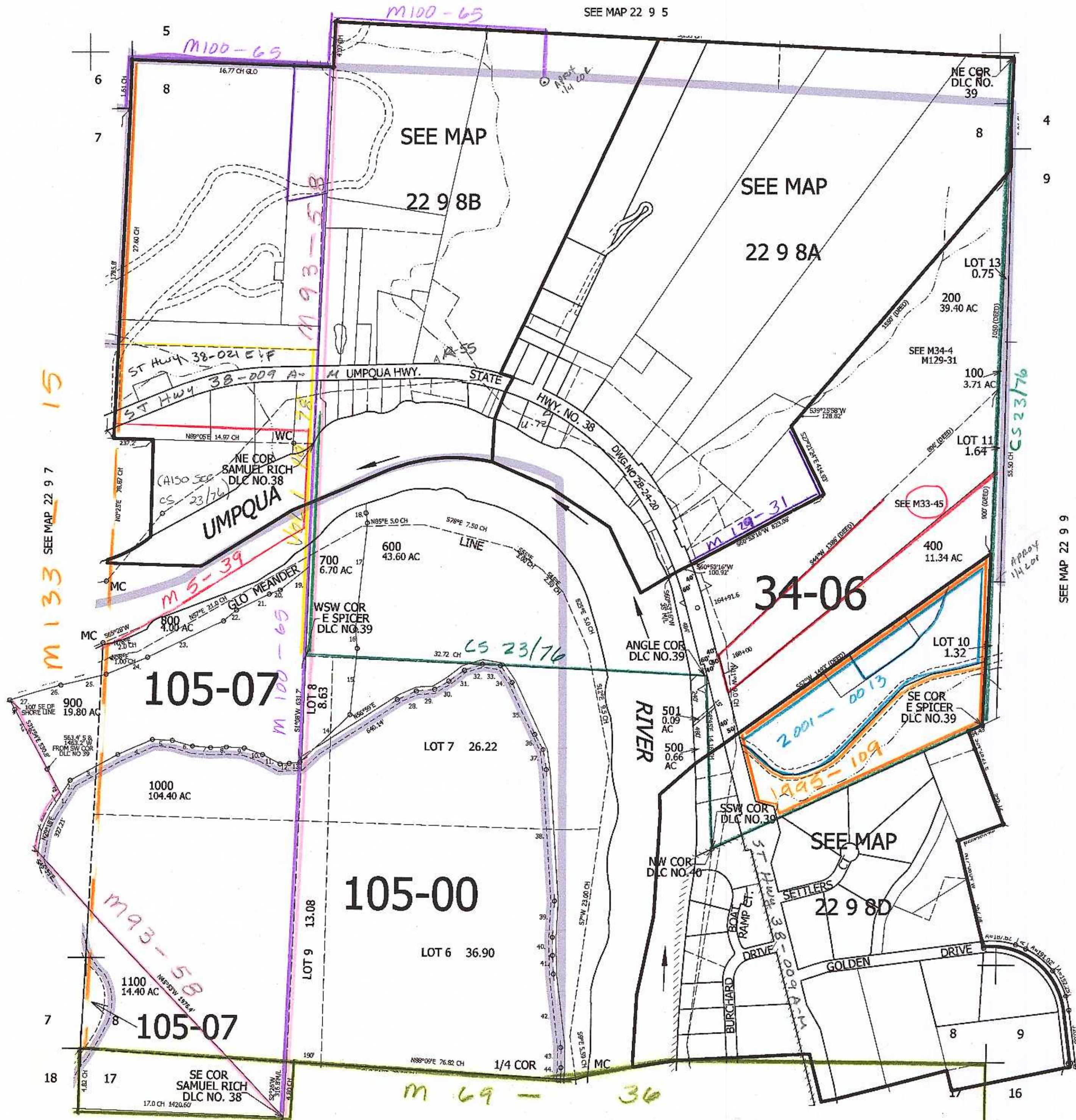
SEC.8 T.22S. R.9W. W.M. DOUGLAS COUNTY

1" = 400'

REVISED ON 3-1-11

22 9 8 & INDEX

SEE MAP 22 9 5



CANCELLED NO'S 800M1 1000M1 1100M1 201 300

SEE MAP 22 9 9

TAXLOTS 600 THRU 1000

- 1. N87°02'E 42.30'
- 2. N66°14'E 103.42'
- 3. N66°02'E 297.51'
- 4. N71°44'E 205.31'
- 5. N83°06'E 104.01'
- 6. S73°44'E 108.08'
- 7. S78°15'E 98.40'
- 8. S89°52'E 96.04'
- 9. S81°50'E 102.00'
- 10. S66°58'E 105.95'
- 11. S57°54'E 103.02'
- 12. S89°32'E 45.30'
- 13. S89°32'E 44.16'
- 14. N43°13'E 369.60'
- 15. N42°35'E 379.10'
- 16. N7°03'W 121.30'
- 17. S2°25'W 534.00'
- 18. N20°04'W 56.20'
- 19. N49°46'E 149.00' BY DEED
- 20. N80°08'E 61.00'
- 21. N63°06'E 233.00'
- 22. N52°06'E 108.00'
- 23. N62°57'E 506.00'
- 24. N69°44'E 274.00'
- 25. N73°52'E 296.00'
- 26. N72°17'E 154.00'
- 27. N74°09'E 136.00'
- 28. N66°12'E 102.89'
- 29. N83°59'E 106.09'
- 30. N58°42'E 91.82'
- 31. N53°02'E 97.70'
- 32. N69°15'E 105.62'
- 33. S84°24'E 109.19'
- 34. S35°23'E 115.93'
- 35. S25°47'E 297.81'
- 36. S2°35'E 101.77'
- 37. S9°30'E 106.51'
- 38. S41°52'E 704.62'
- 39. S14°49'W 203.47'
- 40. S0°57'E 93.88'
- 41. S3°35'E 98.93'
- 42. S7°52'E 406.95'
- 43. S41°19'E 102.96'
- 44. S3°58'W 101.21'

746,000

CM 3/8/11

22 9 8 & INDEX

SEE MAP 22 9 17

SEE MAP 22 9 17A

4,052,000