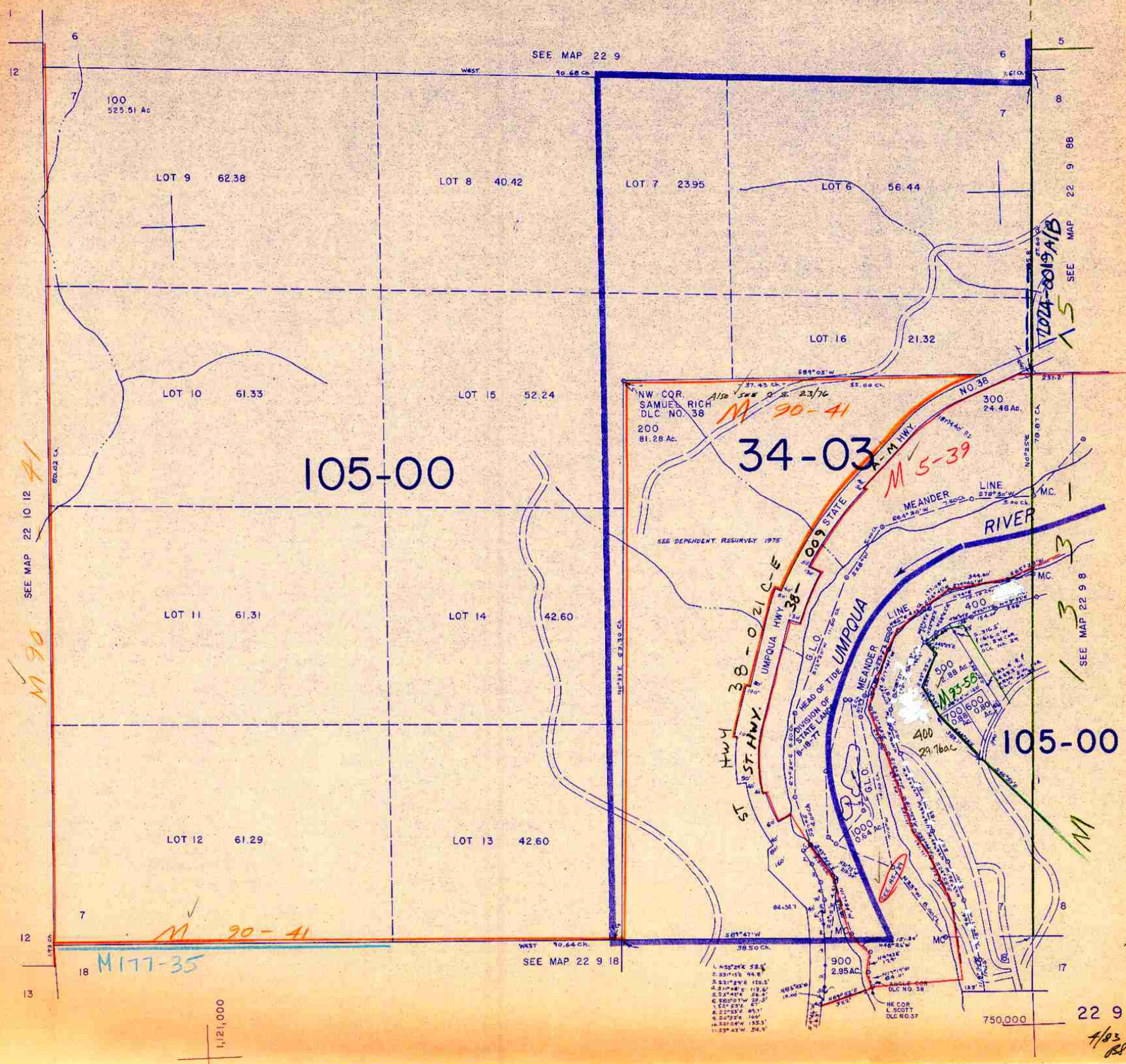


THIS MAP WAS PREPARED FOR
LATERAL RESURVEY ONLY

SECTION 7 T.22S. R.9W. W.M.
DOUGLAS COUNTY

1" = 400'



SEE MAP 22 10 12 41
M 90

M 90-41
M 117-35

M 90-41
M 5-39
34-03

12024-0019A/B
15

SEE MAP 22 9 8
3

M

1/2" = 1,000'

L. 52° 51' 56" 94.8'
 S. 21° 24' 16" 120.5'
 E. 21° 48' 11" 112.6'
 S. 57° 42' 26" 26.4'
 E. 80° 01' 10" 22.5'
 S. 22° 52' 16" 67'
 E. 22° 52' 16" 67.1'
 S. 22° 52' 16" 100'
 E. 22° 52' 16" 133.3'
 S. 22° 52' 16" 133.3'
 E. 22° 52' 16" 34.9'

NK COR. L. SCOTT DLC NO. 37

750,000

1/23/88