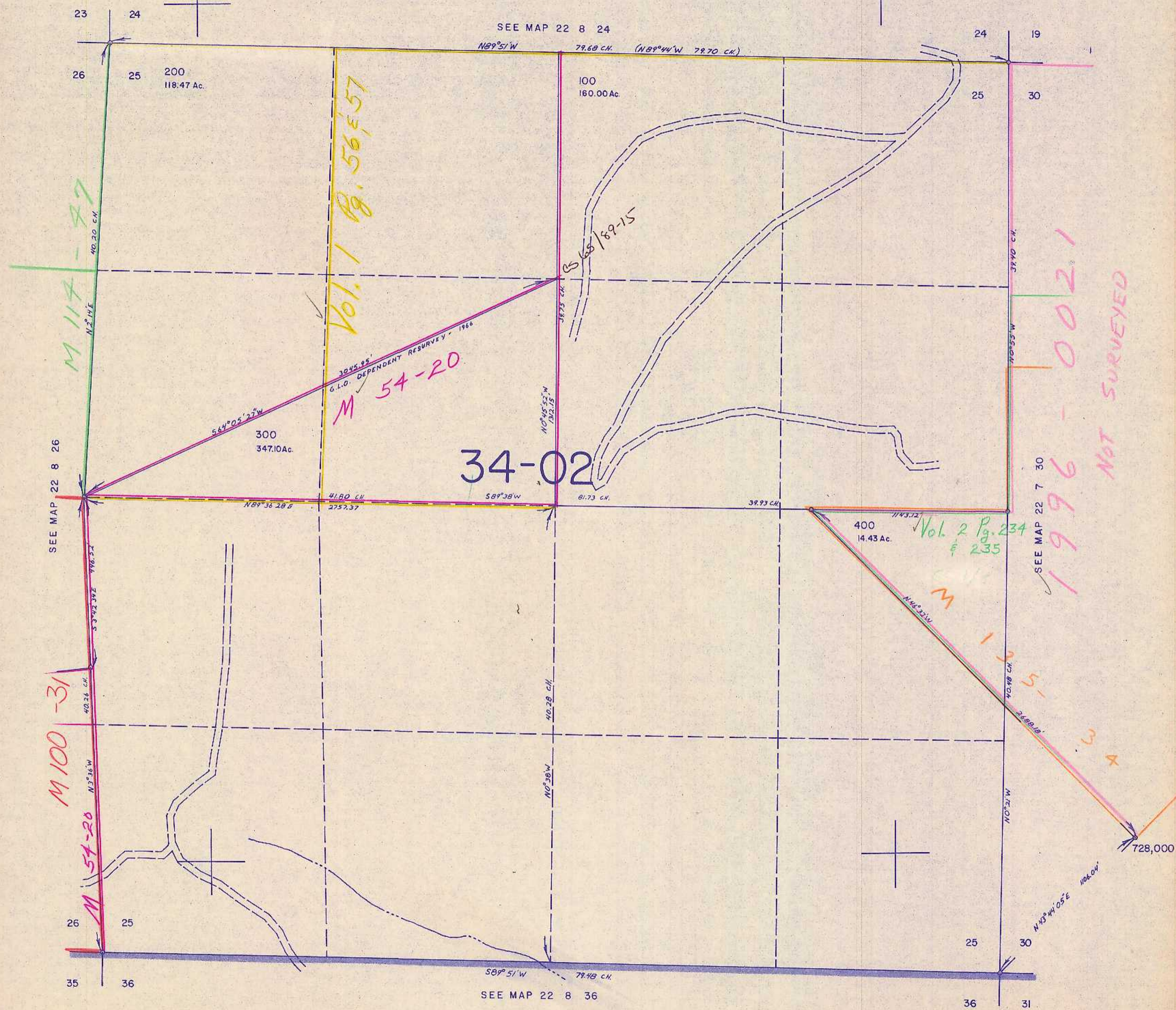


SECTION 25 T.22S. R.8W. W.M.
DOUGLAS COUNTY

22 8 25

THIS MAP WAS PREPARED FOR
ASSESSMENT PURPOSE ONLY.

1"=400'



SEE MAP 22 8 24

NB89°51'W 79.68 CH. (NB89°44'W 79.70 CH.)

200
118.47 Ac.

100
160.00 Ac.

300
347.10 Ac.

34-02

400
14.43 Ac.

Vol. 2 Pg. 234
§ 235

SEE MAP 22 7 30

1996-0021
NOT SURVEYED

M 100-31

M 54-20

M 54-20

Vol. 1 Pg. 56, 57

Vol. 2 Pg. 234
§ 235

SEE MAP 22 8 36

1,183,000

22 8 25
5/83 BS