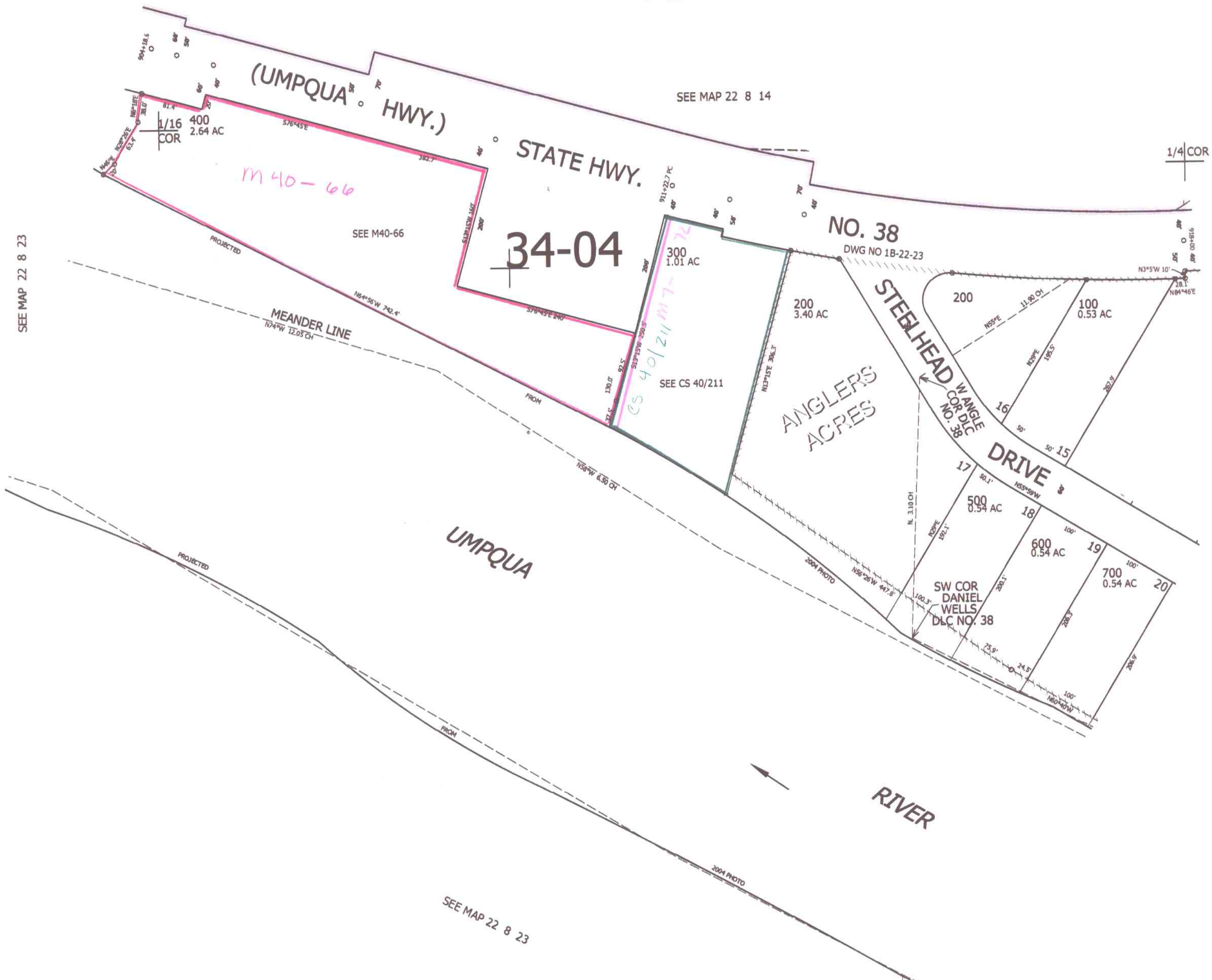


THIS MAP WAS PREPARED FOR ASSESSMENT PURPOSE ONLY.

NE1/4 NW1/4 SEC.23 T.22S. R.8W. W.M.
DOUGLAS COUNTY
1" = 100'

REVISED ON
6-21-13

22 8 23BA



CANCELLED NO'S

SEE MAP 22 8 23AB

737,000

1/16 COR

1/16 COR

DM
7/23/13

22 8 23BA

4,096,000