

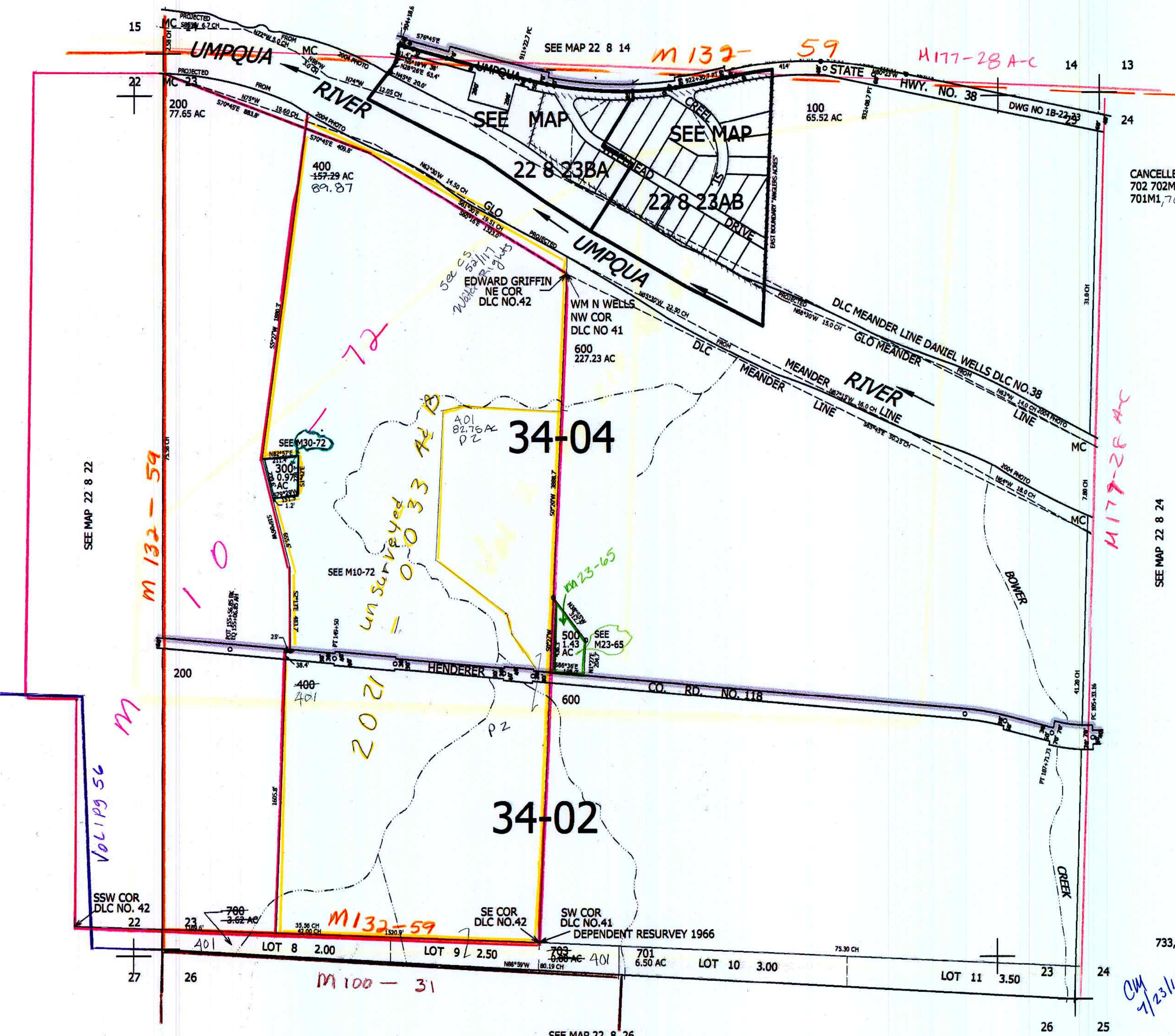
THIS MAP WAS PREPARED FOR ASSESSMENT PURPOSE ONLY.

SEC.23 T.22S. R.8W. W.M. DOUGLAS COUNTY

1" = 400'

REVISED ON 6-21-13

22 8 23 & INDEX



CANCELLED NO'S 702 702M1 700M1 701M1, 700, 703

SEE MAP 22 8 24

733,000

CM 7/23/13

22 8 23 & INDEX

4,099,000

SEE MAP 22 8 26

SEE MAP 22 8 22

SEE MAP 22 8 14

SEE MAP

SEE MAP

SEE M30-72

SEE M10-72

SEE M23-65

M 132-59

M 100-31

M 132-59

M 177-28 AC

M 177-26 AC

M Vol 19 56

un surveyed = 0.033 AC

See S.S. Wells rights

34-04

34-02

22 8 23BA

22 8 23AB

EDWARD GRIFFIN NE COR DLC NO. 42

WM N WELLS NW COR DLC NO 41

DLC MEANDER LINE DANIEL WELLS DLC NO. 38

GLO MEANDER MEANDER RIVER

HENDERER CO. RD. NO. 118

DEPENDENT RESURVEY 1966

SSW COR DLC NO. 42

SE COR DLC NO. 42

SW COR DLC NO. 41

LOT 8 2.00

LOT 9 2.50

LOT 10 3.00

LOT 11 3.50

26

27

26

25

24

23

14

24

22

15

200 77.65 AC

400 157.29 AC 89.87

600 227.23 AC

100 65.52 AC

700 3.62 AC

703 0.06 AC

701 6.50 AC

733,000