

4-15-98  
7-21-03

22 8 18B

THIS MAP WAS PREPARED FOR  
ASSESSMENT PURPOSE ONLY.

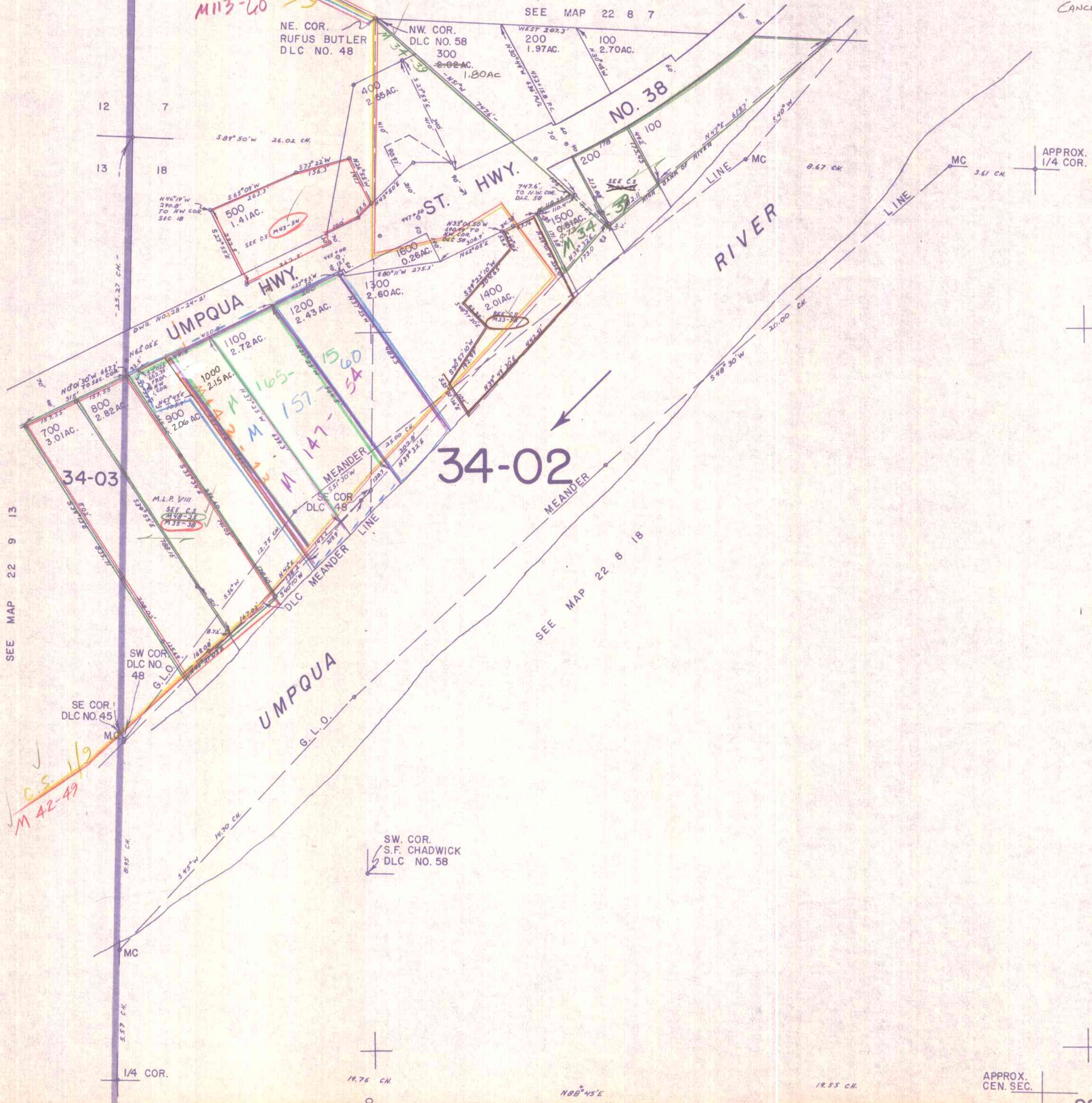
NW1/4 SEC. 18 T.22S. R.8W. W.M.  
DOUGLAS COUNTY

1" = 200'

SEE MAP 22 8 7

CANCELLED NO'S

301  
1001  
900A1



SEE MAP 22 9 13

SEE MAP 22 8 18

34-02

34-03

M 42-49  
C.S. 119

M 113-60

M 165-54  
M 157-54  
M 147-54

SW COR.  
S.F. CHADWICK  
DLC NO. 58

NE COR.  
RUFUS BUTLER  
DLC NO. 45

NW COR.  
DLC NO. 48

NE COR.  
RUFUS BUTLER  
DLC NO. 48

NW COR.  
DLC NO. 58

SE COR.  
DLC NO. 45

SW COR.  
DLC NO. 48

1/4 COR.

APPROX.  
1/4 COR.

742,000

APPROX.  
CEN. SEC.

22 8 18B

5/83 BJ

14.76 CH.

153,000

N88°45'E

12.55 CH.