

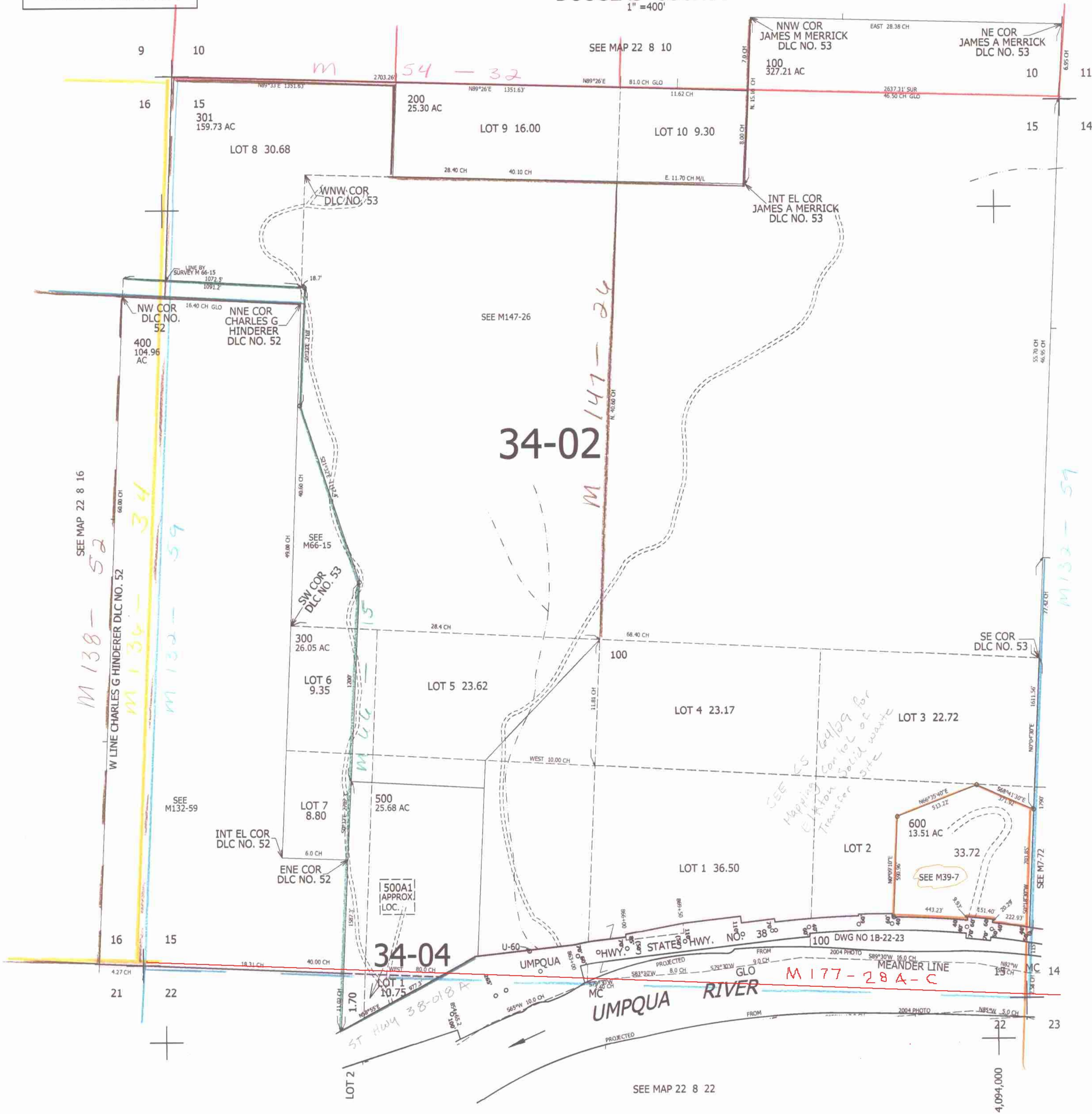
THIS MAP WAS PREPARED FOR ASSESSMENT PURPOSE ONLY.

SEC.15 T.22S. R.8W. W.M. DOUGLAS COUNTY

REVISED ON 6-21-13

22 8 15

1" = 400'



CANCELLED NO'S

SEE MAP 22 8 14

cm 7/29/13

738,000

LCV

22 8 15

SEE MAP 22 8 22

4,094,000