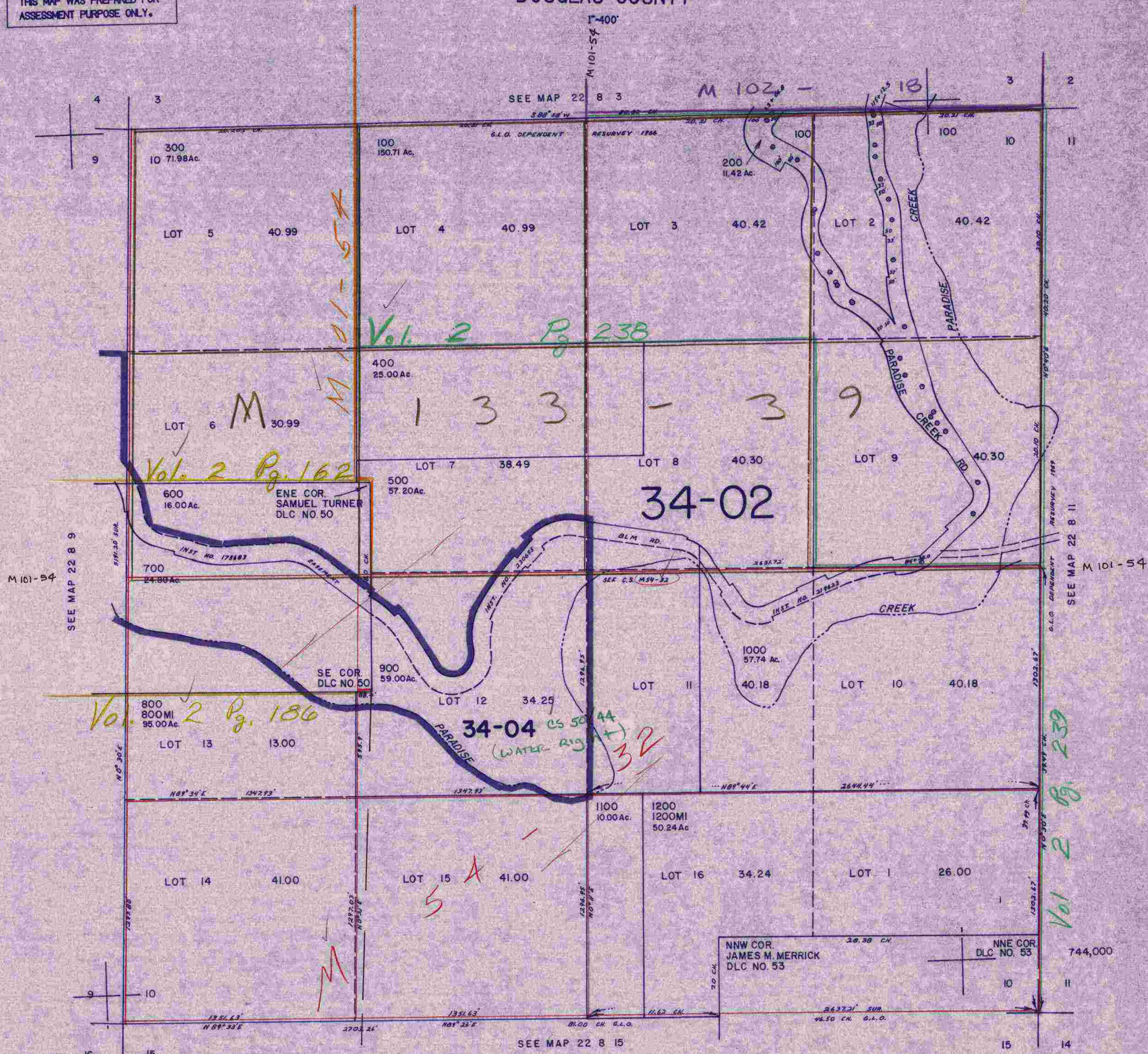


SECTION 10 T.22S. R.8W. W.M.
DOUGLAS COUNTY

22 8 10

THIS MAP WAS PREPARED FOR
ASSESSMENT PURPOSE ONLY.



Vol. 2 Pg. 239

Vol. 2 Pg. 186

Vol. 2 Pg. 162

Vol. 2 Pg. 238

34-02

34-04 CS 50 44
(WATER RIG) 32

22 8 10

5/02