

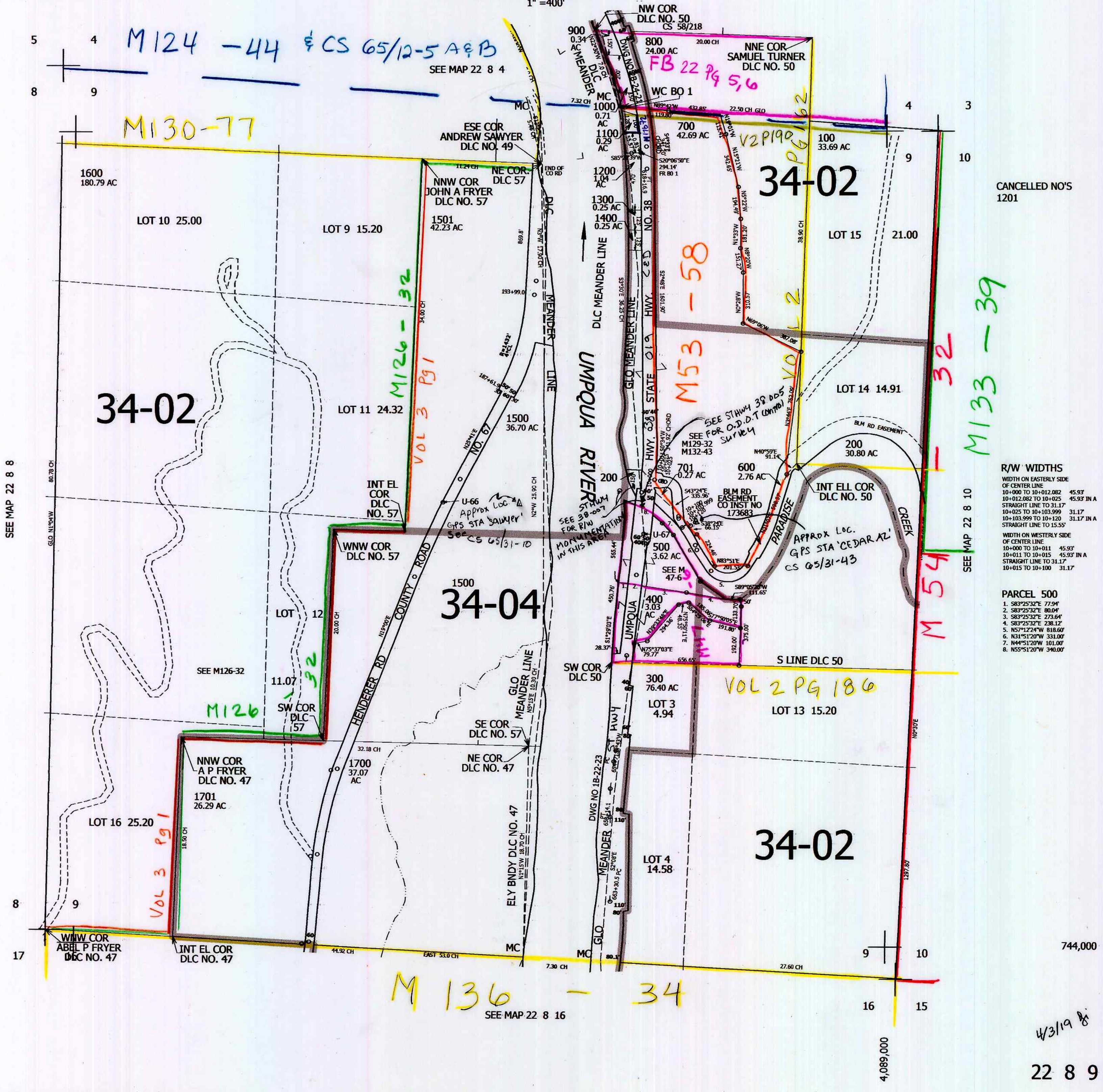
THIS MAP WAS PREPARED FOR ASSESSMENT PURPOSE ONLY.

SEC.9 T.22S. R.8W. W.M. DOUGLAS COUNTY

REVISED ON 4-1-19

22 8 9

1" = 400'



CANCELLED NO'S 1201

R/W WIDTHS

WIDTH ON EASTERLY SIDE OF CENTER LINE

10+000 TO 10+012.082	45.93'
10+012.082 TO 10+025	45.93' IN A
STRAIGHT LINE TO 31.17	
10+025 TO 10+103.999	31.17'
10+103.999 TO 10+120	31.17' IN A
STRAIGHT LINE TO 15.55'	

WIDTH ON WESTERLY SIDE OF CENTER LINE

10+000 TO 10+011	45.93'
10+011 TO 10+015	45.93' IN A
STRAIGHT LINE TO 31.17	
10+015 TO 10+100	31.17'

PARCEL 500

1. S83°25'32"E 77.94'
2. S83°25'32"E 80.04'
3. S83°25'32"E 273.64'
4. S83°25'32"E 238.12'
5. N57°12'24"W 818.60'
6. N31°51'20"W 331.00'
7. N44°51'20"W 101.00'
8. N55°51'20"W 340.00'

4/31/19

22 8 9