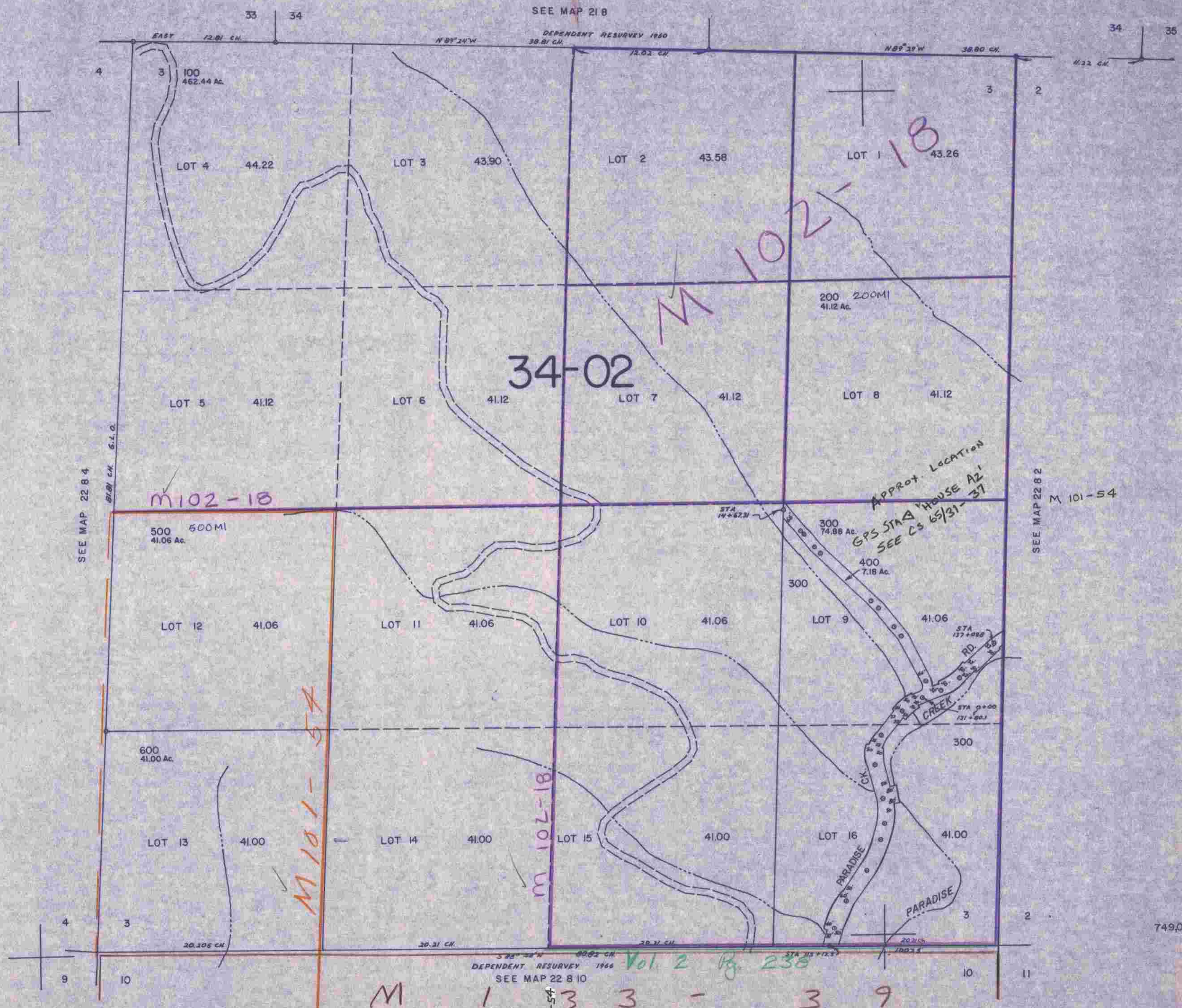


SECTION 3 T.22S. R.8W. W.M.
DOUGLAS COUNTY

22 8 3

THIS MAP WAS PREPARED FOR
ASSESSMENT PURPOSE ONLY.

1"=400'



1,168,000

22 8 3

5/03
BS

M 1 3 3 - 3 9

M 101-54

749,000