

T.22S. R.8W. W.M. DOUGLAS COUNTY

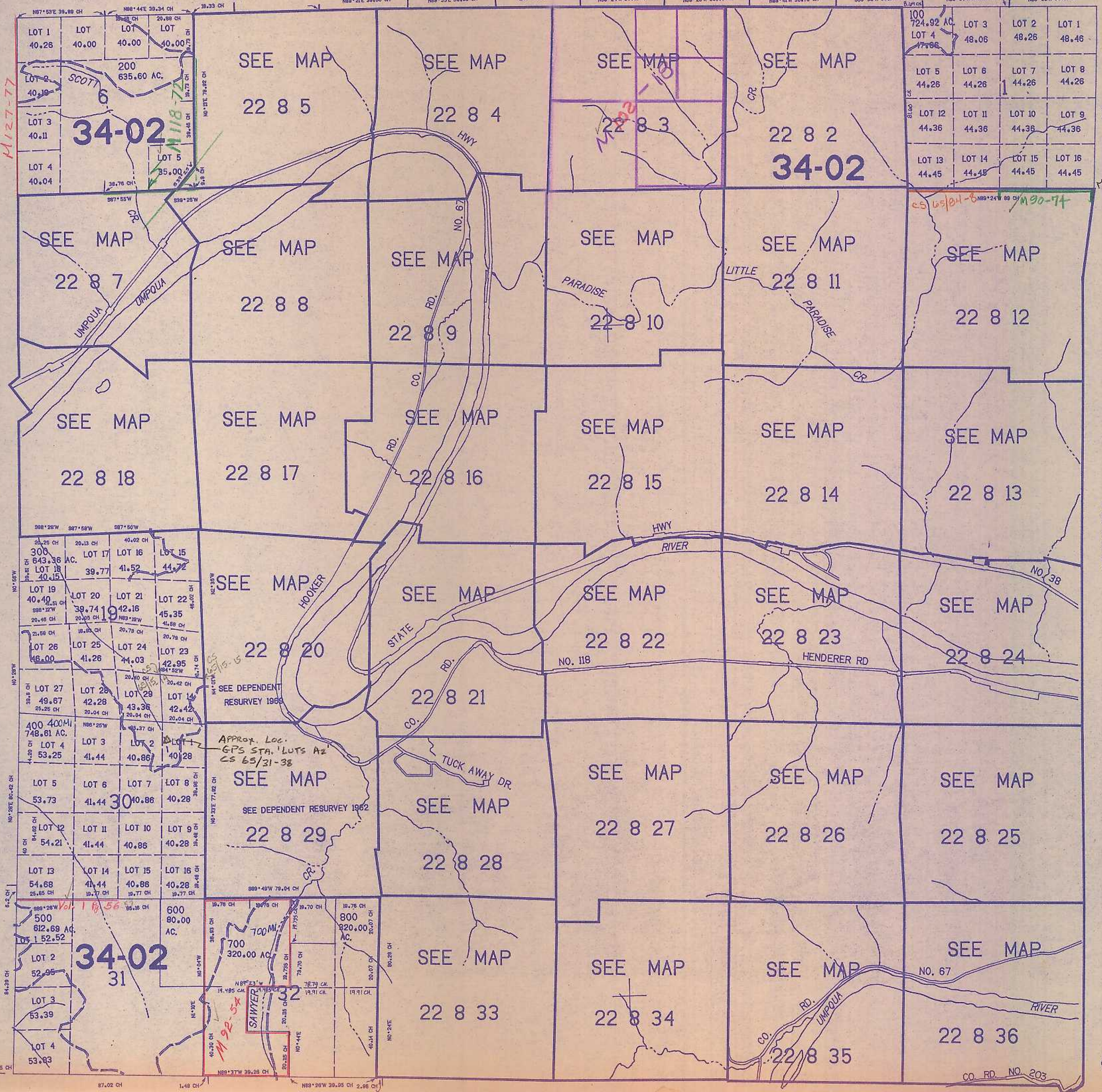
THIS MAP WAS PREPARED FOR ASSESSMENT PURPOSE ONLY.

SEE MAP 21 8

1"=2000'

SEE DEPENDENT RESURVEY 4-14-60

SEE DEPENDENT RESURVEY 3-10-47



745.000

SEE MAP 22 7

7/03 BS

SEE MAP 22 8

1150.000

SEE MAP 22 9