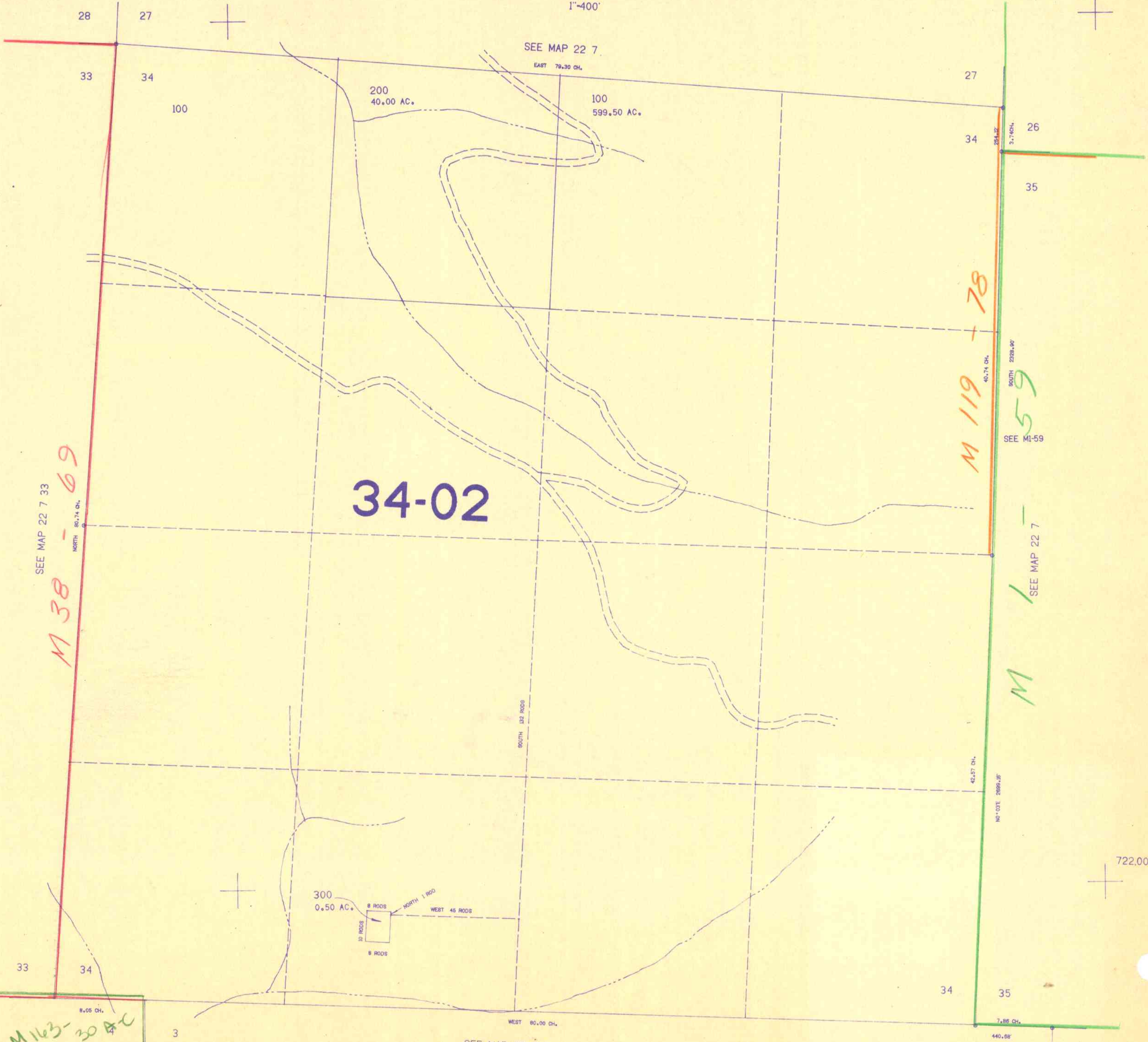
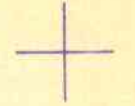


THIS MAP WAS PREPARED FOR ASSESSMENT PURPOSE ONLY.

SECTION 34 T.22S. R.7W. W.M. DOUGLAS COUNTY

22 7 34

1"=400'



SEE MAP 22 7 33
M 38 - 69

M 119 - 78

M 59
SEE M-59

M
SEE MAP 22 7

M 1163-30 AC

34-02

1,200,000

SEE MAP 23 7 3

722,000

22 7 34

8/18/28