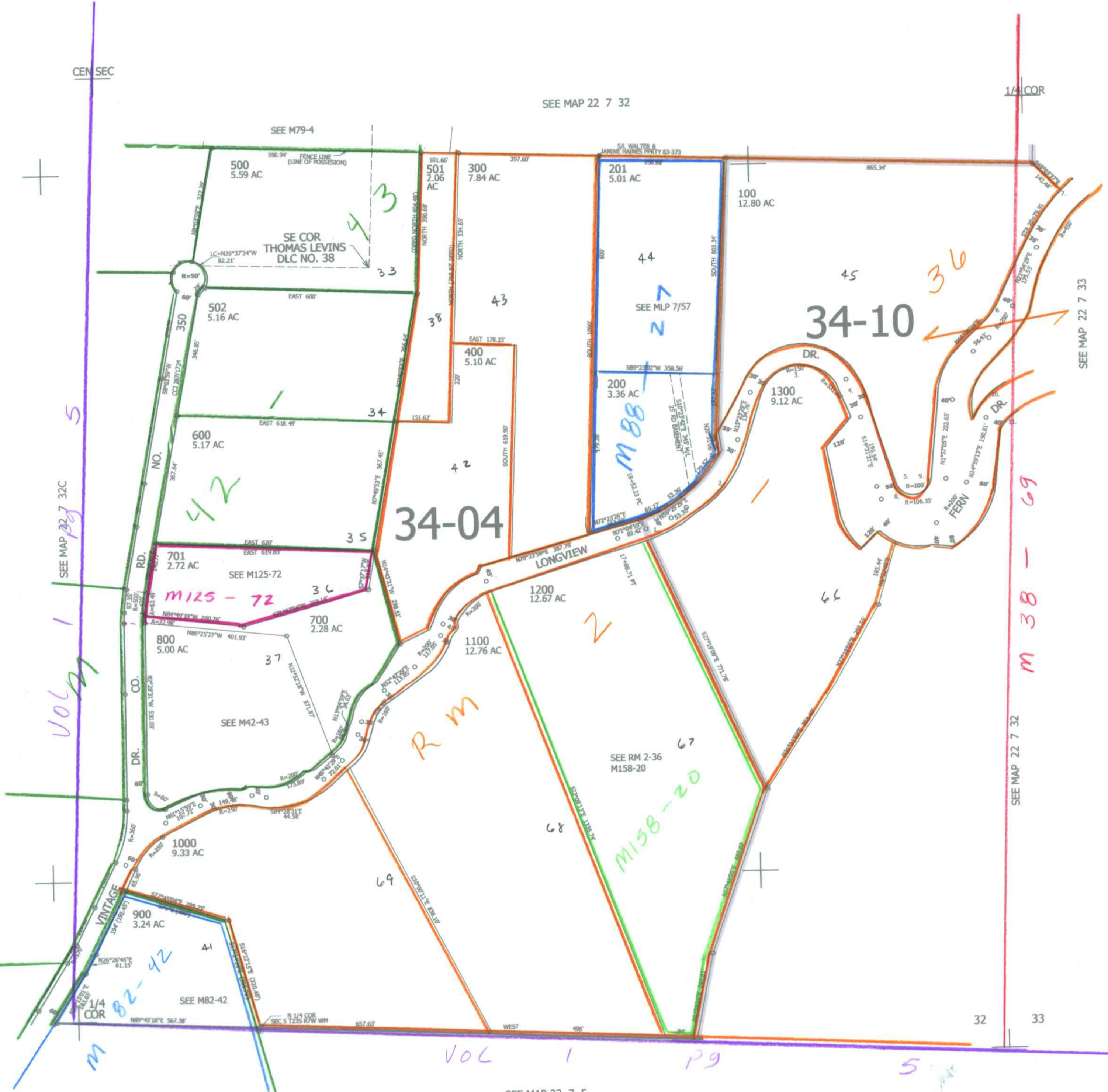


THIS MAP WAS PREPARED FOR ASSESSMENT PURPOSE ONLY.

SE1/4 SEC.32 T.22S. R.7W. W.M.
DOUGLAS COUNTY
1" = 200'

REVISED ON
4-9-13

22 7 32D



CANCELLED NO'S

LONGVIEW DRIVE

1. DELTA=14°39'30"
R=301.6'
T=38.81'
R=337'
2. DELTA=41°02'
R=126.13'
T=150.8'
3. DELTA=13°14'
R=150.8'
T=325.12'
4. DELTA=19°51'
R=331.9'
T=58.05'
5. DELTA=163°31'24"
R=100'
T=690.68'
6. DELTA=25°02'
R=250'
T=55.05'
7. DELTA=22°23'
R=450'
T=89.03'
8. DELTA=108°40'16"
R=106.35'
T=148.2'
9. DELTA=41°49'
R=200'
T=76.41'

FERN DRIVE

10. DELTA=44°59'24"
R=200'
T=66.96'
11. DELTA=60°41'46"
R=140'
T=81.97'

SEE MAP 23 7 5

4,114,000

22 7 32D
JCv