

THIS MAP WAS PREPARED FOR ASSESSMENT PURPOSE ONLY.

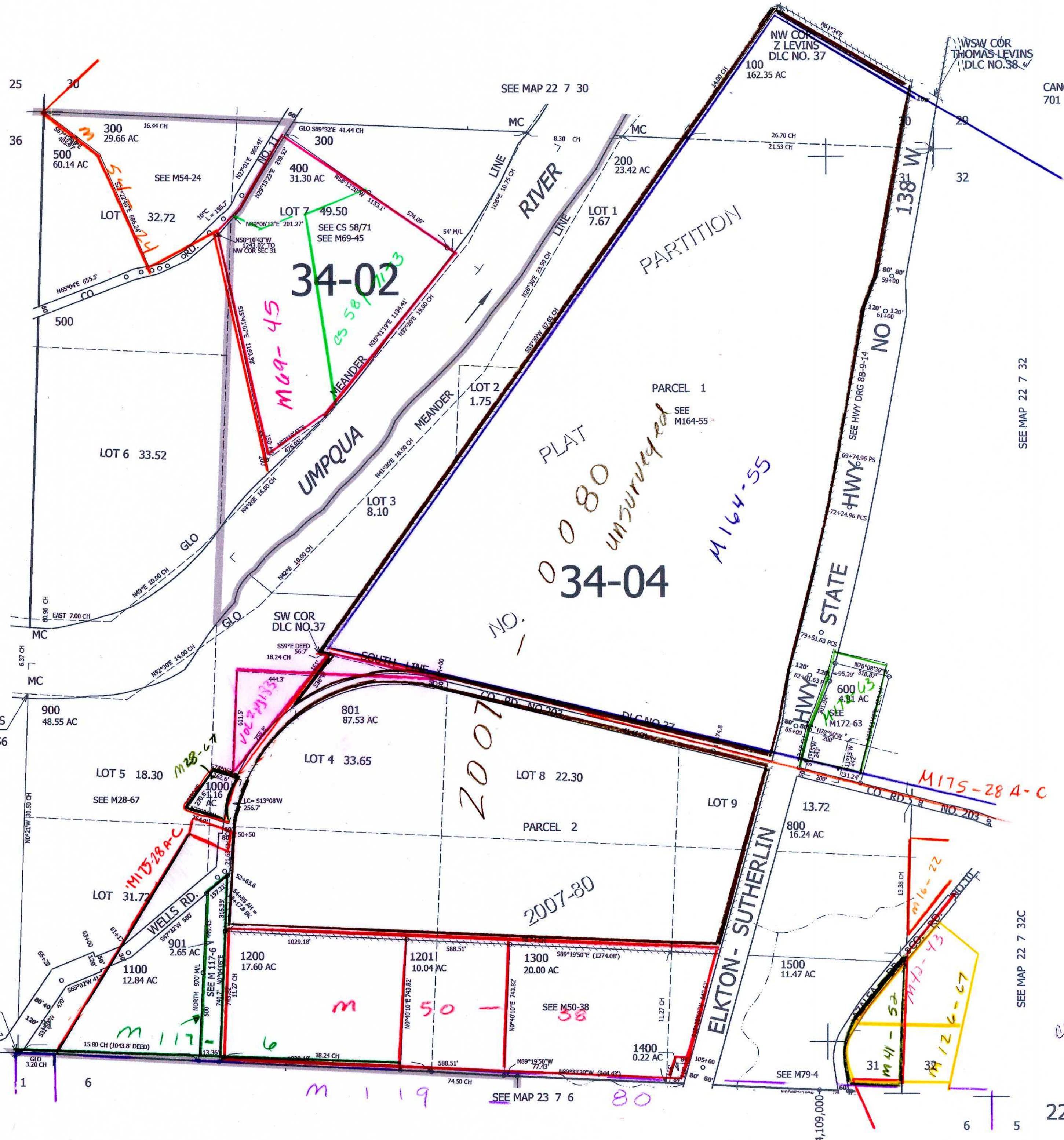
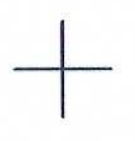
SEC.31 T.22S. R.7W. W.M. DOUGLAS COUNTY

1" = 400'

REVISED ON 1-11-17

22 7 31

CANCELLED NO'S 701 802 700



SEE MAP 22 8 36

IRA WELLS NE COR DLC NO. 56

IRA COR ERA WELLS DLC NO. 56

SEE MAP 23 8 1

PLAT 0080 UNSURVEYED

2007

2007-80

M 1 1 9

SEE MAP 23 7 6

80

SEE MAP 22 7 32

SEE MAP 22 7 32C

22 7 31

EM 06/02/09 SC 722,000