

THIS MAP WAS PREPARED FOR ASSESSMENT PURPOSE ONLY.

NE1/4 NE1/4 SEC.30 T.22S. R.7W. W.M.
DOUGLAS COUNTY

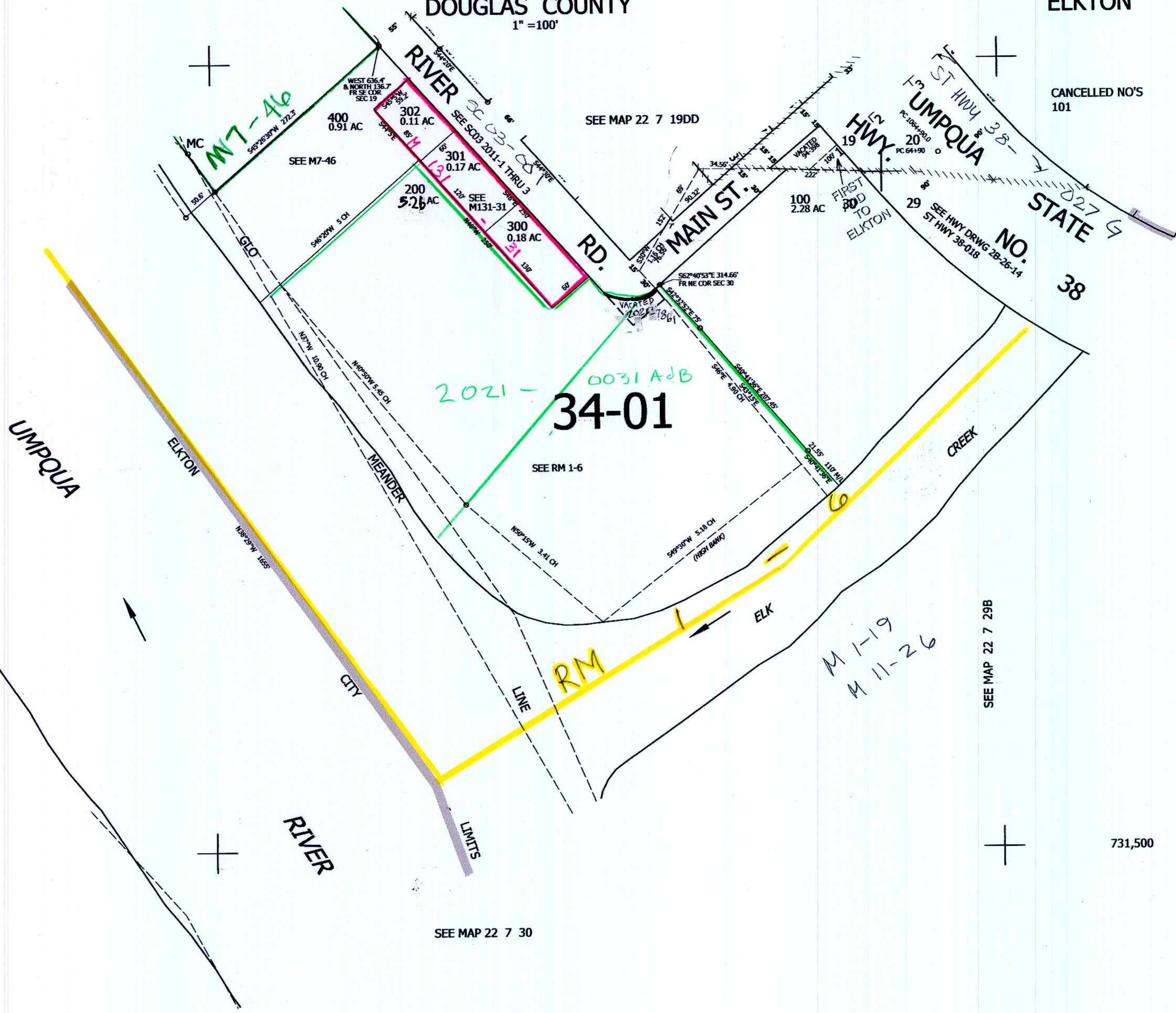
REVISED ON
8-13-20

22 7 30AA
ELKTON

1" = 100'

CANCELLED NO'S
101

1/16 COR



SEE MAP 22 7 30

SEE MAP 22 7 29B

731,500

SEE MAP 22 7 30

1/16 COR

1/16 COR

4,109,000

8-18-2020
JCL

22 7 30AA
ELKTON