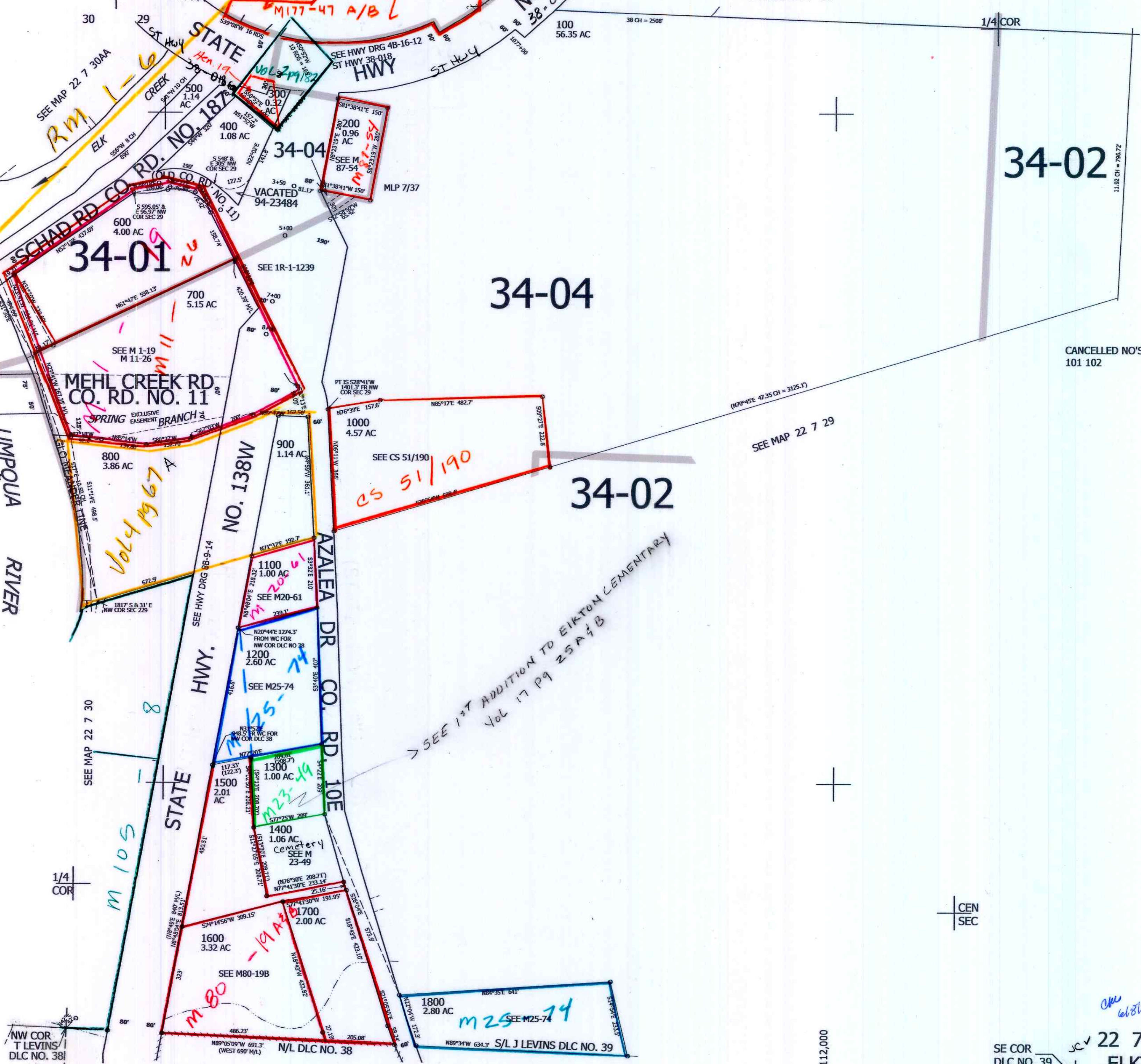


THIS MAP WAS PREPARED FOR  
ASSESSMENT PURPOSE ONLY 19

SEE MAP 22 7 20



34-02

34-04

34-02

34-01

MEHL CREEK RD  
CO. RD. NO. 11

UMPQUA RIVER

STATE HWY.  
NO. 138W

AZALEA DR  
CO. RD. NO. 10E

NW COR  
T LEVINS  
DLC NO. 38

SEE MAP 22 7 29

SE COR  
DLC NO. 39

22 7 29B  
ELKTON

SEE MAP 22 7 29

CANCELLED NO'S  
101 102

SEE MAP 22 7 29

SEE 1ST ADDITION TO ELKTON CEMETARY  
VOL 17 P 9 25 A 4 B

730,000

4,112,000

CEN  
SEC