

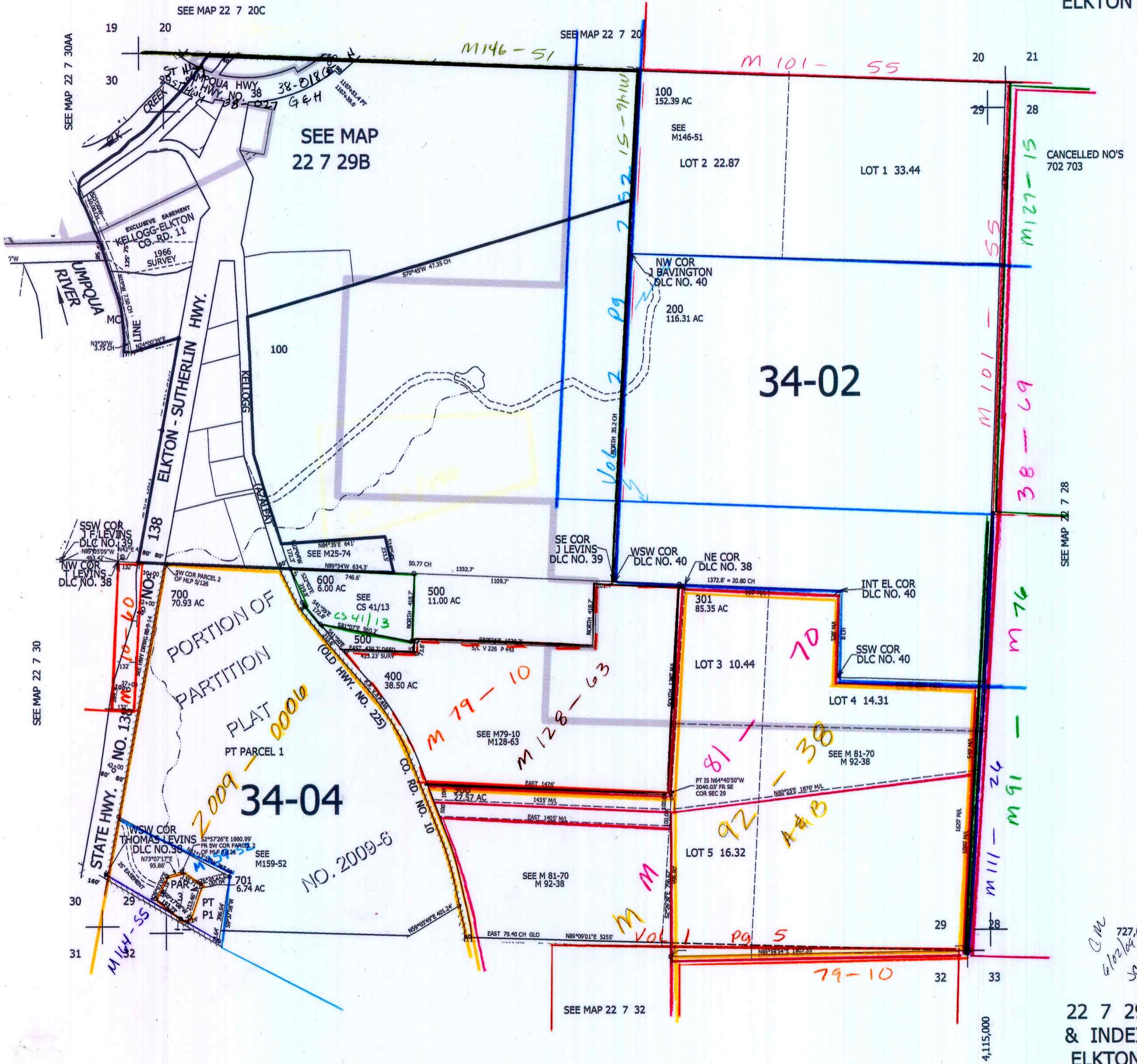
THIS MAP WAS PREPARED FOR ASSESSMENT PURPOSE ONLY.

SEC.29 T.22S. R.7W. W.M. DOUGLAS COUNTY

REVISED ON 2-25-14

22 7 29 & INDEX ELKTON

1" = 400'



SEE MAP 22 7 28

22 7 29 & INDEX ELKTON

Handwritten note: *CM 727,000 4/20/14 sev*