

THIS MAP WAS PREPARED FOR ASSESSMENT PURPOSE ONLY.

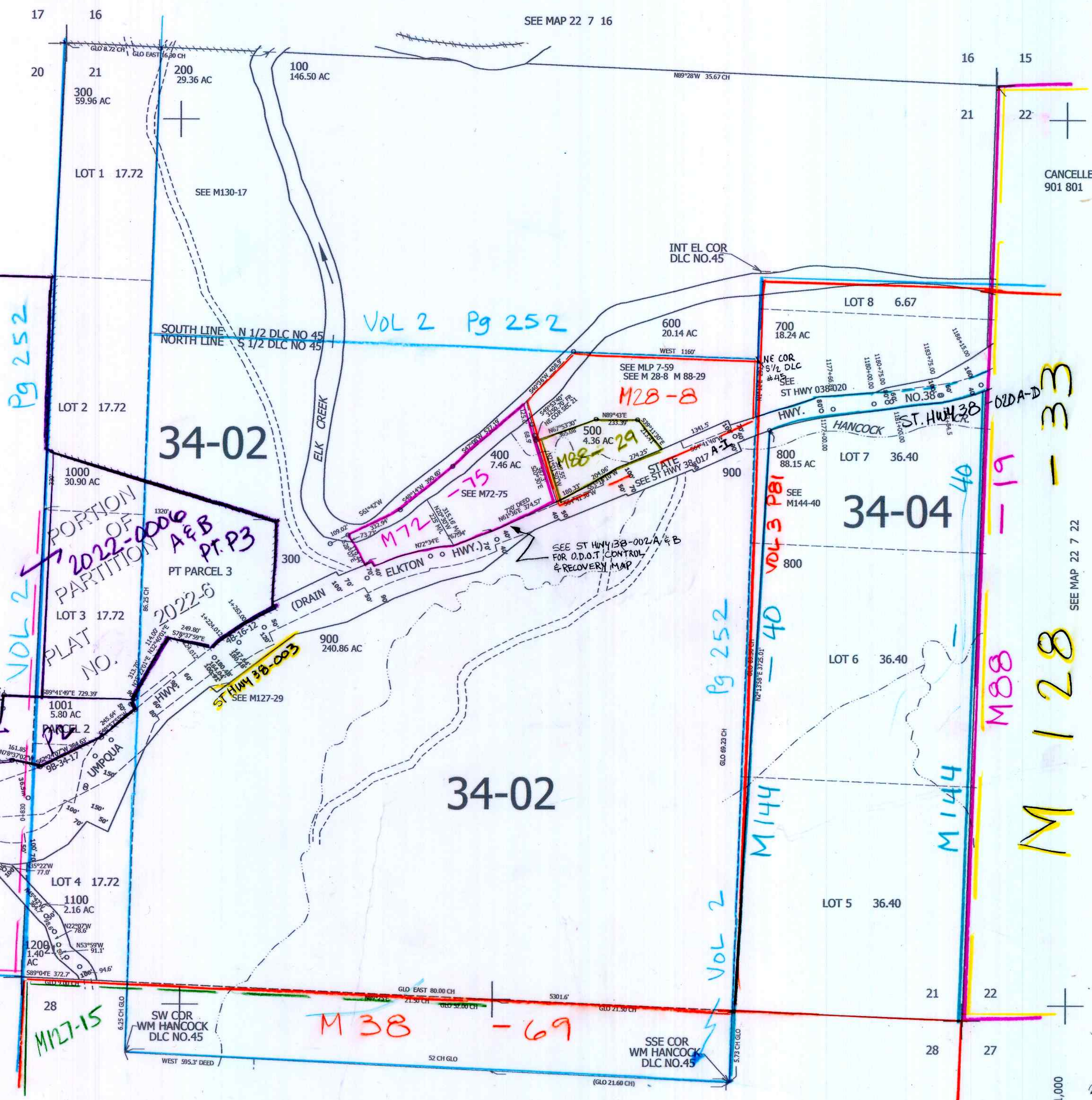
SEC.21 T.22S. R.7W. W.M. DOUGLAS COUNTY 1" = 400'

REVISED ON 2-15-22

22 7 21

SEE MAP 22 7 16

CANCELLED NO'S 901 801



Pg 252

VOL 2 Pg 252

M101-55

VOL 2

PORTION OF PARTITION A & B PT. P3 2022-0006

34-02

M28-8

M88-29

M72-75

M144

Pg 252

VOL 3 P81

M144-40

M38-69

M88

M128

M128-33

4,121,000

2/2022

22 7 21

SEE MAP 22 7 28

SEE MAP 22 7 22

732,000