

THIS MAP WAS PREPARED FOR ASSESSMENT PURPOSE ONLY.

Upper Left:
123°35'15"W 43°39'1"N
4104256E 737966N ft

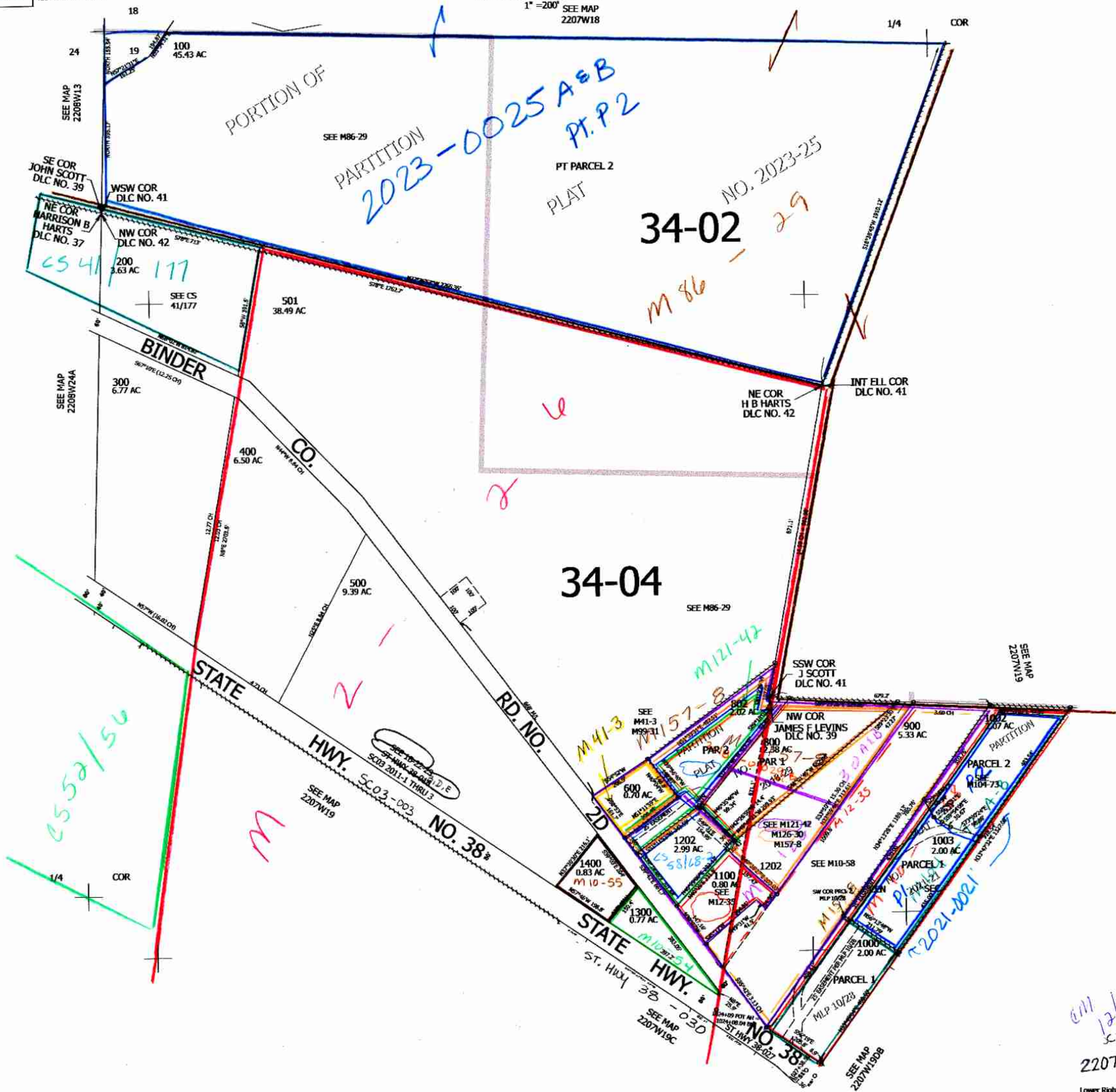
NW1/4 SEC.19 T.22S. R.07W. W.M.
DOUGLAS COUNTY

1" = 200'
SEE MAP
2207W18

Date Exported 2023-08-10

2207198
& INDEX

CANCELLED MOS:
700 1001 502
801 1200 1201
101



552/50

PARTITION
2023-0025 A & B
PT. P 2

34-02

34-04

STATE HWY. NO. 38

STATE HWY. NO. 38

12/29/15

2207198

Lower Right:
123°34'20"W 43°38'28"N
4108180E 734488N ft